

# Let Your Kids Roam ALL Summer



**Get A Summer Youth Pass today!**

For summertime savings, add a PT Summer Youth Pass to your child's youth ORCA card and he or she will receive unlimited rides on local Pierce Transit service. It's the way to go from June 1st through August 31st! Get details at [piercetransit.org](http://piercetransit.org) or call 253.581.8000, option 1.



## Service Levels for Holidays From June 8, through September 27, 2014

Pierce Transit modifies some service to more closely match ridership levels on holidays and days around those holidays.

Pierce Transit Local Bus and SHUTTLE		
<b>Independence Day</b> 7/4/14	Sunday Schedule	TDS Bus Shop closed; no bus phone service. SHUTTLE phone service available 8am to 5pm.
<b>Labor Day</b> 9/1/14	Sunday Schedule	TDS Bus Shop closed; no bus phone service. SHUTTLE phone service available 8am to 5pm.

**TRANSLATION SERVICE** is available in more than 200 languages. These are the most requested:

Llame al 253.581.8000. Habrá un representante y servicio de traducción en español disponible para atenderle.

Заказать услуги представителя с переводом на русский язык можно по телефону 253-581-8000.

Xin gọi 253-581-8000 để nói chuyện với Nhân Viên Đại Diện Ban Phục Vụ Khách Hàng là người sẽ cung cấp dịch vụ thông dịch Việt Ngữ.

Tawagan ang 253-581-8000 upang makipag-usap sa Representatibo ng Pangserbisyong Kustomer na magbibigay ng serbisyong pagsasalín ng wika sa Tagalog.

한국어 번역 서비스를 제공하는 상담원과 통화하시려면 253-581-8000 으로 전화하십시오.

អាចទំនាក់ទំនងភ្នាក់ងារសេវាបកប្រែភាសាខ្មែរ (កម្ពុជា) ដោយហៅតាមរយៈ លេខទូរស័ព្ទ ២៥៣-៥៨១-៨០០០ ។

# Service Change Rider Alert

EFFECTIVE JUNE 8, 2014

## What's New?

### Service Change Updates

Routes listed have schedule adjustments and/or routing changes. Details are in the June 2014 edition of *The Bus Stops Here*.



### Summer Youth Pass

Youth 18 and younger travel all summer long on local PT routes for only \$36!

### Special Events Services

Ride Pierce Transit to the Taste Of Tacoma and Washington State Fair!

### NEW! Puyallup Connector

Read all about this new service connecting Downtown Puyallup and South Hill.



[piercetransit.org](http://piercetransit.org) • 253.581.8000

## What's New?

### New Times and Services Starting June 8, 2014

**Route 1** On Weekdays, northbound trips have new boarding times at 14th & Pacific and 64th & Pacific.

**Route 48** Three Weekday trips to downtown Tacoma are adjusted to 7:20pm, 8:20pm and 9:20pm.

**Route 100 Gig Harbor** Expect detours this summer while Route 101 operates.

**Route 101 Gig Harbor Trolley** Seasonal service returns from Uptown to the Downtown area of Gig Harbor seven days a week. This service begins Saturday, May 24th and ends Monday, September 1st. New fares are effective; see page 98 in *The Bus Stops Here*.

**Route 212 Lakewood - Steilacoom** New trip added weekdays from Pierce College at 8:45pm.

### Route 425 Puyallup Connector

**NEW** Route 425 is a new 12-month demonstration project. This route provides service seven days a week from the South Hill Mall Transit Center to the Puyallup Sounder Station and north Meridian. Along the way, this route serves shopping, recreation, medical facilities and local events. Give it a try today!



### Route 475 University Place – Olympia Express

This service is eliminated.

### Route 485 Olympia – Puyallup Express

This service is eliminated.

### Route 500 Federal Way

Detours onto Interstate 5.

### Route 501 Milton-Federal Way

Detours onto Interstate 5.

**Route 503 Fife – Federal Way** Weekday trips have adjusted times. Trips beginning in Fife start on 59th instead of Pacific Hwy. See route map for details.

**Route 504 – Milton-Edgewood** Saturday and Sunday schedules are adjusted. Trips beginning in Fife start on 59th instead of Pacific Hwy. See route map for details.

### New Closed Door Policy

Beginning June 8th, Pierce Transit will begin following a new “closed door” policy on its fixed route bus services. At the end of a bus route, if the transit operator steps away from the bus, he or she will secure the bus by closing its doors. Any passengers already on board will be asked to deboard the bus, and wait outside if the passenger plans to continue riding on the next trip. New passengers arriving may also wait a short time outside, until the transit operator returns. In most locations, bus shelters are available.

*Once onboard, passengers will pay their fares.*

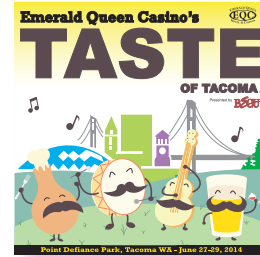
When a bus stops at a transit center in the middle of its route, a transit operator may also step away from the bus for a short while. In this situation, passengers may stay onboard the bus, and the operator will leave the door open. New riders may board, and pay their fares once the operator has returned.

This change will increase passenger safety, help ensure that correct fares are collected from riders, and decrease vandalism. Please be patient as we strive to improve safety for all of us!

### Ride the Taste Express

**June 27-29, 2014**

Ride Pierce Transit's Taste Express straight to the Emerald Queen Casino's Taste of Tacoma! Buses will depart from Tacoma Community College every 15 minutes, and head straight to Point Defiance Park. Service will run on Friday and Saturday from 10:30am to 9:30pm, and on Sunday from 10:30am to 8:30pm. Regular fares are charged on the Taste Express, and valid transfers from other Pierce Transit routes will be honored. Those arriving at TCC by car may park for free. Don't miss out on this fun Tacoma event!



### Washington State Fair Service Returns!

Take Pierce Transit's Fair Express service straight to the Fair's Blue Gate from one of three convenient locations: South Hill Mall, Lakewood Towne Center and Tacoma Community College. As the Fair approaches, pick up a brochure or go to [piercetransit.org](http://piercetransit.org) for route and schedule information.



**DO THE PUYALLUP!**  
**SEPT 5 - 21**

For more information, visit [THEFAIR.com](http://THEFAIR.com)