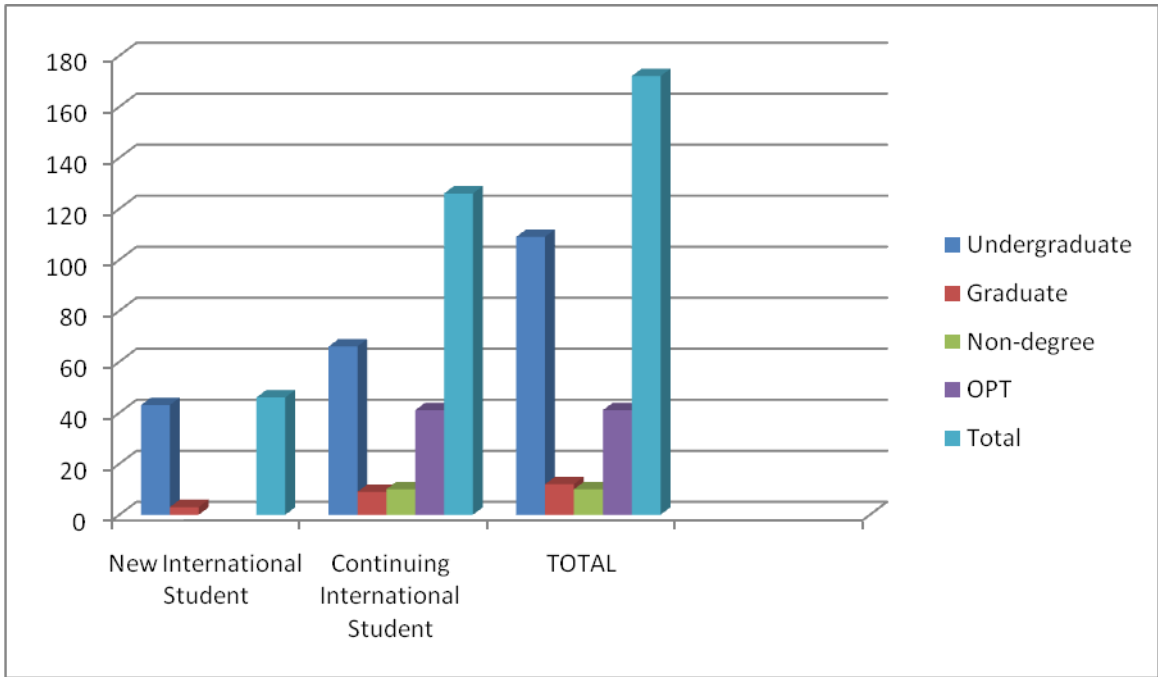


A. BASIC DATA	
Total Enrolled International Students (Fall 2011)	136
Total Students on Post-Completion OPT (Fall 2011)	41
Total International Students	177

B. ACADEMIC LEVEL	
a) Undergraduate	
<i>Bachelor's, Unspecified</i>	109
b) Graduate	
<i>Graduate, Unspecified</i>	12
c) Non-Degree	
<i>Non-degree (e.g. certificates, exchange students, continuing ed, non-credit)</i>	10
<i>Intensive English Language (15 or more contact hours per week)</i>	5
d) Optional Practical Training (all academic levels)	41
ACADEMIC LEVEL TOTAL	177

C. NEW & CONTINUING INTERNATIONAL ENROLLMENTS					
	Undergraduate	Graduate	Non-Degree	OPT	Total
New International Students	43	3	0	0	46
Continuing International Students	66	9	10	41	126
TOTAL	109	12	10	41	172

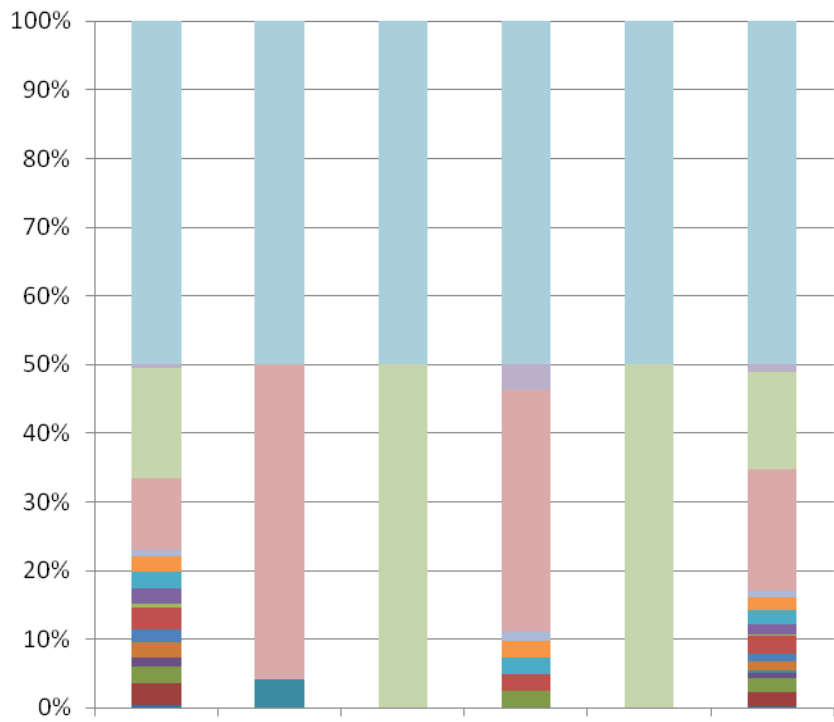


D. ENROLLMENT STATUS					
	Undergraduate	Graduate	Non-degree	OPT	Total
Full-Time Students	101	8	9	41	159
Part-Time Students	8	4	1	0	13
Total	109	12	10	41	172

E. VISA	
	Graduate
J1 Visa	1

I. FIELD OF STUDY						
CIP Code and Field of Study	Undergraduate	Graduate	Non-Degree	OPT	Unknown Level	Total
01 Natural Resources and Conservation	1					1
02 Communication, Journalism & Related Programs	7					7
03 Computer & Information Sciences & Support Services	5			2		5
04 Foreign Languages, Literature & Linguistics	3					3
05 Family & Consumer Sciences/ Human Sciences (Family Therapy)		1				1
06 Legal Professions & Studies	5					5
07 Biological & Biomedical Sciences	4					4
08 Mathematics & Statistics	7			2		7
09 Philosophy and Religious Studies	1					1
09 Physical Sciences	5					5
10 Psychology	5			2		5
11 Social Science (Sociology, Economics, History)	5			2		5
12 Health Professions & Related Clinical Sciences	2			1		2
13 Business, Management, Marketing	23	11		29		34

& Related Support Services						
14 Undeclared	35		10		5	50
15 Unknown Field of Study (Music)	1			3		1
FIELD OF STUDY TOTAL	109	12	10	41	5	177



- Total
- Unknown Field of Study (Music)
- Undeclared
- Business, Management, Marketing & Related Support Services
- Health Professions & Related Clinical Sciences
- Social Science (Sociology and Economics)
- Psychology
- Physical Sciences
- Philosophy and Religious Studies
- Mathematics & Statistics
- Biological & Biomeidcal Sciences
- Legal Professions & Studies
- Family & Consumer Sciences/ Human Sciences
- Foreign Languages, Literature & Linguistics
- Computer & Information Sciences & Support Service
- Communication, Journalism & Related Programs
- Natural Resources and Conservation

J. PLACE OF ORIGIN.							
Code	Place of Origin (SEVIS Code)	Undergraduate	Graduate	Non-Degree	OPT	Unknown Level	Total
5102	Canada (CA)	1					1
2110	China (CH)	38	2	2	24	3	69
3213	Denmark (DA)		1	5	1		7
4191	Dominica (DO)	1					1
3223	Finland (FI)	2					2
3223	France (FR)			2			2
2130	Hong Kong (HK)	1			1		2
2220	India (IN)		1		3		4
2315	Indonesia (ID)		1		1		2
2415	Iran (IR)		1				1
2420	Iraq (IZ)		1				1
2140	Japan (JA)	9			3	1	13
2430	Jordan (JO)	1					1
2160	South Korea (KS)	5			1		6
2180	Mongolia (MG)	2					2
3270	Norway (NO)	31			2		33
3186	Russia (RS)	1					1
2455	Saudi Arabia (SA)		1				1
3283	Sweden (SW0)	1	1				2
2120	Taiwan (TW)	5				1	6
2350	Thailand 9 TH)		1		1		2
4180	Trinidad and Tobago (TD)	3			1		4
1185	Uganda	1					1
2360	Vietnam (VM)	10			1		11
TOTAL		112	10	9	39	5	175

