

Graduate Student Handbook



**“Developing Nurse Leaders, Transforming Lives, and
Improving Health for All”**

Pacific Lutheran University
School of Nursing
12180 Park Avenue S.
Tacoma, WA
www.plu.edu/nursing
Phone: 253-535-7672

November 18, 2015

Table of Contents

Welcome from the Dean.....	7
Welcome from the Associate Dean for Graduate Studies.....	8
PLU School of Nursing.....	9
University Mission	
School of Nursing Guiding Principles	
School of Nursing Vision	
School of Nursing Mission	
School of Nursing Motto	
School of Nursing Philosophy	
History of the PLU School of Nursing.....	12
General Information.....	14
Culture of Respect	
Equal Educational Opportunity	
PLU’s Non-Discrimination Policy	
Family Educational Rights and Privacy Act (FERPA)	
Interplay between PLU’s Student Code of Conduct and the School of Nursing	
School of Nursing Administrative Office.....	18
Contact Information for SoN Administrative Personnel	
School of Nursing Organization	
SoN Organizational Chart	
SoN Governance Chart	
Communication	
Appointments with Administration, Faculty, and Staff	
Change of Name, Address, or Telephone Number	
Electronic Resources	
Email	
Sakai	
BannerWeb	
Mail Folders	
Bulletin Boards	
Changes to Student Policies	
School of Nursing Curriculum.....	22
School of Nursing Conceptual Framework	

Operational definitions for conceptual frameworks	
MSN Conceptual Framework	
DNP Conceptual Framework	
School of Nursing Program Outcomes	
MSN Program Outcomes	
DNP Program Outcomes	
Sample Programs of Study	
Entry Level Master's	
MSN Care and Outcomes Manager	
BSN to DNP Full-time	
BSN to DNP Part-time	
MSN to DNP Non-ARNP	
Post-ARNP to DNP	
Special Programming Opportunities	
Nursing Study-Away Programs	
University of Namibia Study-Away, Nursing	
Chengdu, China Study-Away	
Comprehensive Geriatric Education Program	
Student Governance / Organizations	36
Student Participation in School of Nursing Governance	
Recruitment, Admission, & Progression (RAP)	
Curriculum and Instruction (CIC)	
Student Advisory Councils	
Graduate Student Advisory Council	
Student Open Forums	
Student Participation in Program Evaluation	
Student Evaluation of Courses and Faculty	
End-of-Program Student Surveys & Meetings	
Student Participation in Faculty Recruitment	
Student Organizations and Organizations of Student Interest	
Associated Students of PLU	
Delta Iota Chi	
Sigma Theta Tau International	
Alumni Association	
Orientation and Ceremonies.....	39
School of Nursing Orientation	
Opening Convocation	
School of Nursing Recognition Ceremony	

Commencement	
Student Awards and Scholarships	
School of Nursing and PLU Resources	41
Faculty Advisor	
School of Nursing Learning Laboratories	
Nursing Study-Away Programs	
University Services	
Ramstad Commons	
Academic Advising	
Academic Assistance	
Career Connections	
Community Service and Engagement	
Disability Support Services	
On-campus Employment	
Library	
Writing Center	
Help Desk	
Financial Aid and Student Services	
Military and Veteran’s Services	
Bookstore	
Student Life	
Counseling Center	
Student Health Services	
Fitness Services	
Wang Center for Global Education	
Campus Ministry	
Campus Safety	
Diversity Center / Women’s Center	
Title IX resources	
Professional Conduct and Values of the Nursing Profession.....	46
Code of Ethics	
Values and Professional Behaviors	
Integrity and Academic Integrity	
Social Media & Electronic Communication	
Netiquette	
Intimate and Sexual Relationships	
General Academic Policies	51
Prerequisite and Co-requisite Courses	
Textbooks and Course Resources	

ATI Assessment	
Portfolios	
Exams	
Essential Qualifications	
Disability Services for PLU Students	
Pregnancy	
NCLEX Testing Accommodations	
Letters of Recommendations and References	
FERPA release for Letters of Recommendations and References	
Professional Misconduct and Safety Issues	59
Violations of Academic Integrity	
Disruptive Behaviors	
Sexual Misconduct and Non-Consenting Relationships	
Drug, Marijuana, or Alcohol Misuse	
Dismissal From the School of Nursing for Reasons of Conduct	
Academic Advising.....	63
General Advising Information	
Change of Advisor	
Academic Performance	64
Attendance	
Grading Scale	
Academic Progression	
Notice of Deficiency	
Incomplete Grades	
Probationary Status	
Repeating a Course	
Dismissal From the School of Nursing for Academic Reasons	
Course Level Grade Issues.....	68
Courses Outside the School of Nursing	
Course Failure	
Grade Dispute Policy	
Informal Grade Dispute Guidelines	
Formal Grade Dispute Guidelines	
Status and Enrollment.....	72
Part-time Enrollment	
Leaves From the School of Nursing	

Leave of Absence	
Medical Withdrawal	
Withdrawal from the Term	
Absence in Excess of One Year	
Returning from Leave of Absence	
Returning from Leave	
Returning from Medical Withdrawal	
Returning from Withdrawal of the Term	
Returning from Leave in Excess of One Year	
Petitions.....	76
The General Petition Process	
Clinical Practice Policies and Health Requirements / Expectation.....	78
Clinical Placement	
Compliance and Immunization Requirements	
Health Requirement Submission Deadlines	
Criminal Background Checks	
Uniform Policy	
Grooming and Appearance	
Photo IDs	
Transportation	
Privacy Protection / Computer Security	
Health Protection Policy	
Clinical Placement Compliance	
Incident Reports	
Needle stick injury or bloodborne pathogen exposure	
General Injury	
Errors	
Hostile Environment	
Professional Relationships	
N499 Clinical Placements	
Clinical Orientation & Electronic Medical Record Training	
Participation and Attendance	
Liability Insurance	
Clinical Evaluations	
Appendices.....	87
Appendix A – Notice of Deficiency	
Appendix B – Statement of Understanding, Acknowledgement, and Compliance for Essential Qualifications	

Welcome from the Dean



Sheila K. Smith, PhD, RN, APRN, ANP-BC
Dean and Professor

Welcome to the School of Nursing at Pacific Lutheran University! I'm pleased to introduce you to one of the best School of Nursing and small liberal arts university in the United States. At the PLU School of Nursing, care for our patients and for our world combine with highest professional ethics and commitment to academic and practice excellence, to prepare you for a deeply rewarding career in nursing. We develop nurse leaders who make a difference in the lives of their patients, the profession, and their communities. Excellence in clinical practice, professional caring, a holistic approach, and well-developed critical thinking are hallmarks of PLU nursing graduates. In addition, graduates from the PLU School of Nursing are committed to highest possible health outcomes through a patient-centered approach to care. Social justice, global engagement, values-based personal development, and a commitment to service are fostered through the development of strong clinical skills and professional nursing content mastery. In addition, your education at PLU will foster your growth as a person, confident in your ability to collaborate fully with experts in nursing and other fields, and to contribute meaningfully to health change.

Our faculty experts are committed to your development as a purposeful, mature, thoughtful, highly-skilled, and highly-valued professional. You will experience excellent mentoring in a compassionate and intellectually stimulating environment, where expert practice will challenge you to grow and succeed in nursing. Whether you are joining us for the BSN, MSN, or DNP degree program, the relationships and foundation of learning you develop at PLU will serve you for a lifetime and foster your contributions to a life of care. Our innovative academic and continuing education programs prepare nurses to meet the demands of complex healthcare systems, community partnerships, high risk populations, and evidence-based care across the continuum of healthcare delivery. We are pleased to welcome you to Pacific Lutheran University for your nursing education. We look forward to joining you on your journey!

Dr. Sheila K. Smith, RN, APRN, ANP-BC
Dean and Professor

“Developing Nurse Leaders, Transforming Lives and Improving Health for All”

Welcome from the Associate Dean for Graduate Studies



Teri M. Woo, PhD, RN, APRN, PNP-BC
Associate Dean for Graduate Programs and Associate Professor

Welcome to the Pacific Lutheran University School of Nursing. As the Associate Dean for Graduate Nursing Programs, I am honored to work with graduate students in the Masters of Science in Nursing and the Doctor of Nursing Practice programs.

The Doctor of Nursing Practice (DNP) program is the first doctoral program at Pacific Lutheran University. We offer DNP tracks for nurses who want to become a Family Nurse Practitioner (FNP) and for those who are already advanced practice nurses who want to earn the DNP degree as a post-masters student. Our FNP graduates are solid clinicians and are well prepared to practice in primary care. Our graduates have consistently high pass rates on FNP national certification examinations. The DNP degree will prepare nurses to be leaders in the complex health care environment.

The Masters of Science in Nursing has been offered at PLU since the 1990's. PLU graduates are nursing leaders throughout the Puget Sound area. The Care and Outcomes Manager track prepares nurses who are leaders and change agents in a complex care environment. The Entry-Level MSN provides a pathway for non-nurses with a degree in another field to gain RN licensure and the MSN degree. MSN graduates are prepared for doctoral studies and many of our graduates continue on for further education.

The faculty who teach in the graduate program are experts in their field and most are practicing in advanced nursing roles. The graduate nursing faculty act as advisors and mentors for graduate students who are taking on new nursing roles and gaining leadership skills.

We welcome you to Pacific Lutheran University.

Teri Moser Woo PhD, RN, CNL, CPNP, ARNP, FAANP
Associate Professor
Associate Dean for Graduate Nursing Programs

Pacific Lutheran University School of Nursing

University Mission

Pacific Lutheran University (PLU) seeks to educate students for lives of thoughtful inquiry, service, leadership and care - for other people, for their communities, and for the earth.

School of Nursing Guiding Principles

Pacific Lutheran University School of Nursing embraces core values of:

- Benevolence, Care, and Compassion for All
- Nourishing Student and Faculty Success
- Celebrating Diversity and Inclusive Excellence
- Fostering Whole Person Development
- Collaborating Intentionally as Teachers, Leaders, and Scholar-Practitioners
- Partnering with Communities for Improved Population Health and Well-Being
- Reaching out Globally for Engaged Service, Learning, and Scholarship
- Contributing to Sustainable Advancement of the Discipline, Profession, and Practice of Nursing
- Cultivating a Dynamic Community of Giving and Learning
- Advancing Health Equity for All

School of Nursing Vision

Pacific Lutheran University School of Nursing will be a nationally recognized program of preference and distinction, dedicated to improving health and healthcare for all, enacted through transformational nursing education, committed and responsive leadership, and meaningful scholarship.

School of Nursing Mission

Pacific Lutheran University School of Nursing is dedicated to...

- Exemplary and responsive undergraduate, graduate, and continuing nursing education;
- Engaging clinical and community partners in compassionate care for individuals, families, communities, and the world;
- Fostering leadership in nursing through committed service, highest quality education, and meaningful scholarship;

School of Nursing Mottos

- Developing Nurse Leaders, Transforming Lives and Improving Health for All.
- Educating Nurses for Lives of thoughtful Inquiry, Service, Leadership, and Care.

School of Nursing Philosophy

Introduction

This philosophy describes the beliefs and perspectives of the faculty of the School of Nursing at Pacific Lutheran University. Student development and learning are our primary focus. The School of Nursing philosophy embraces the vision and mission of Pacific Lutheran University for thoughtful inquiry, service, leadership, and care. We purposefully integrate liberal education with the study of nursing, scholarship, and civic engagement to foster compassion and meaningful service for and with others, their communities, and the world.

Nursing and Health

The School of Nursing believes that nursing is a theory- and science-based discipline that focuses on person-centered care across all settings and states of health and illness. The art and science of nursing is relationship-based and directed by humanitarian values of human dignity, interdependence, and social justice. As a practice discipline, Nursing works to improve the health and well-being of clients and systems through analytical processes that effect change in the conditions and determinants of health. The work and praxis of nursing are manifest through multiple complex and evolving roles. Nursing strives to respond to the contemporary context of health and illness, and advance shared goals of compassionate, safe, and effective care.

Health encompasses the unique and dynamic unfolding of human patterning in multiple domains. Health and illness occur simultaneously and in dynamic interaction with one another. Appreciating the complexity of the health-illness relationship is key to diagnosing and intervening with human experiences of and responses to health, illness, and disease.

Collegiate Nursing Education

The PLU Nursing faculty believes collegiate nursing education contributes to shaping and stewarding the profession and practice of nursing. Service, leadership and scholarship are essential components in the formation of mature and highest quality professional practitioners of nursing. Academic nursing advances the art, theory, and science of nursing by contributing to evidence-based innovations in healthcare, advocating for progressive and responsible social change, and fostering improved health outcomes.

Faculty as Compassionate Leaders and Scholars

Faculty in the School of Nursing are compassionate leaders and scholars who assume responsibility for the education and development of students into exceptional professional nurses, who embrace intellectual curiosity, diversity, and change.

Nursing faculty are dedicated to creating an open, innovative, responsive learning environment while upholding the standards and ethical obligations of the discipline. The faculty model and instill within students the active pursuit of new knowledge and pathways for contributing leadership roles for the profession and for the discipline.

The SoN faculty are integral members of the PLU community, participating in the life of the University and contributing to its vision, mission, and goals. Within the SoN, faculty function through team-based, collaborative approaches incorporating care, compassion, and shared goals and values. Academic rigor, principled and evidence-based inquiry, thoughtful dialogue, and

meaningful evaluative review characterize the approaches used to foster highest quality nursing education, practice, service, and scholarship.

Students as the Future Promise of the Discipline

Students in the School of Nursing are active learners who embody the future promise and obligations of the discipline. Students are nurtured in their ability to provide compassionate, socially responsible care and contribute to professional citizenship in complex healthcare environments. Cross-disciplinary student learning is fostered through integrating the nursing curriculum with the liberal arts and sciences to foster the development of reflective practitioners who pursue excellence and seek to participate in the evolution and expansion of professional roles.

Shared Values and Guiding Principles

We accomplish our work in the School of Nursing with attention to the vision, mission, and values of the SoN, University, and the discipline and profession of nursing. We actively pursue our development as a community devoted to learning and scholarship, collaborative engagement, growth, meaningful service, and love and compassion for all humankind.

History of the PLU School of Nursing

Prior to 1950, for two decades, pre-nursing at Pacific Lutheran College (PLC) was offered in cooperation with Tacoma General Hospital, Swedish Hospital, and the California Lutheran Hospital in Los Angeles.

The first indication that a bachelor's degree with a major in nursing existed at PLU is identified in the 1945-46 PLC catalog. In the fall of 1950, the nursing curriculum was submitted for consideration by the State of Washington. On April 23, 1951, the State Board of Professional Nurse Registration gave temporary approval for a Department of Nursing Education at Pacific Lutheran College.

In September 1951, a cooperative agreement was signed between PLC and Emanuel Hospital, in Portland, Oregon, agreeing to establish a program in nursing. The clinical education would be at the Emanuel Hospital and its affiliated agencies.

Freda Al Peterson was the first Director from 1951 to 1953. During that time, R. Elaine Kraabel Morken was the Educational Director at Emanuel Hospital. When Freda Al Peterson left PLC in 1953, R. Elaine Kraabel Morken became Director and served from 1953 to 1967.

Ms. Kraabel Morken was followed by Dr. Doris Stucke, who served in the capacity of Educational Director from August 1967 until June 1982. Dr. Stucke was granted a sabbatical leave for the 1982-83 academic year, following which she retired to become professor emeritus. In July 1982, Dr. Moira Mansell was appointed and served as Dean until March 1989. Dr. Dorothy Detlor-Langan served as Dean of the School of Nursing from 1989 to 1997, with Anne Hirsch serving in the role of Associate Dean, Undergraduate Nursing Education and Dr. Cleo Pass as Associate Dean, Graduate Nursing Education. In 1997, Dr. Anne Hirsch assumed the role of Interim Dean for one year. In August 1998, Dr. Terry Miller assumed the role of Dean of the School of Nursing, serving until August 2014. Dr. Teri Moser Woo joined the PLU School of Nursing as Associate Dean for Graduate Programs in 2012. Dr. Sheila Smith, RN, APRN, ANP-BS, was appointed Dean and Professor in August 2014.

On September 17, 1958, full accreditation by the State Board of Professional Nurse Registration was granted. In April 1959, a consultation visit from the National Nursing Accrediting Service occurred. A new program which would allow nursing students to remain on campus for the entire four years was proposed, with full approval being received from the State Board of Professional Nurse Registration in January 1960. In June 1960, Pacific Lutheran College became Pacific Lutheran University. The Department of Nursing Education became the School of Nursing. In 1982, the title of Director was changed to Dean.

The undergraduate program encompasses three study sequences and is approved by the Washington State Nursing Care Quality Assurance Commission. The undergraduate program qualifies students for the Bachelor of Science in nursing degree and certifies them eligible to sit for the registered nurse licensure exam (NCLEX-RN). The basic program is four academic years in length. A sequence for registered nurses pursuing the BSN was established in 1978. In the academic year 1997-98, the RN-BSN program began its phase-out. A new RN-B to MSN cohort

program, for registered nurses with a non-nursing baccalaureate, was proposed to begin September 1999. Starting in the fall of 1990, an LPN-BSN sequence of study was initiated and implemented by Professor Shirley Coleman Aikin. This program, which allows LPNs to obtain the baccalaureate degree following completion of prerequisites, is the first of its kind in Washington State and the Pacific Northwest.

In 1989, the faculty and Board of Regents approved a proposal for a program of study leading to the Master of Science in nursing degree. The program is four semesters in length, offered over a 2-year period. The first students began classes in February 1990, with the first graduates completing the program in May and August, 1992. The MSN Care and Outcomes Manager concentration includes focus areas in nurse education and administration.

In 2003, the School of Nursing enrolled its first cohort in the Entry-Level MSN program. The program is designed for students with non-nursing baccalaureate degrees to complete the graduate degree in nursing. Students' progress through an intensive 15-month course load which qualifies them for the NCLEX-RN licensure examination in Washington State and progress directly into graduate coursework to complete the MSN degree. The entire sequence of courses for this generalist program requires 27 months of study to complete.

Associate Dean for Graduate Nursing Education, Dr. Teri Moser Woo joined the School of Nursing in 2012 and led the faculty in developing the Doctor of Nursing Practice (DNP) program. The PLU Doctor of Nursing Practice degree prepares graduates in the advanced practice specialty area of Family Nurse Practitioner. The DNP is the first doctorate at Pacific Lutheran University and received initial approval from the Northwest Commission on Colleges and Universities and the Washington Nursing Care Quality Commission in 2014. The first DNP students were admitted 2015.

In 1981, Continuing Nursing Education became a formal program within the School of Nursing. The initial director was Dr. Cynthia Mahoney. In 1994, the program was incorporated into the Center for Continued Nursing Learning, and was directed by Dr. Patsy Maloney.

A final major accomplishment of the School of Nursing was the PLU Wellness Center, which for over 23 years provided low-cost health care to the community until its closure in the summer of 2009 due to shrinking public funding. A nurse practitioner faculty member, Professor Joan Stiggelbout, started the Center in the mid-1980's. The nurse-managed center made a major contribution to the School of Nursing and the university, as well as to the local community of Parkland.

General Information

Culture of Respect

The PLU School of Nursing is committed to actively cultivating and promoting safe and respectful environments to ensure equitable opportunities for all students, faculty and staff to learn and work to optimal capacity. Learning environments, structures, systems, policies, and procedures will be based on a positive, productive culture of meaningful, collaborative relationships and attention to a safe, orderly, and respectful learning and working environments.

This respect is illustrated by the following behaviors:

- Acknowledging the value of others by treating them with respect.
- Exemplifying good human relations skills such as courteousness, consideration and responsiveness to others.
- Acting in a dignified professional manner.
- Listening to others carefully and asking for clarification when necessary.
- Acknowledging others time frame by being on time and making reasonable requests are requisites of respect.

These behaviors reflect pride in oneself, the profession of nursing, and being a member of the PLU School of Nursing.

The School of Nursing Culture of Respect is maintained through our Guiding Principles, expectations for student conduct and professional behavior, adherence to the ANA Code of Ethics for Nursing and values of the profession. Please refer to student policies on [conduct](#), [academic integrity](#), [code of ethics](#), [values](#), [netiquette](#), provided throughout this Student Handbook.

Equal Educational Opportunity

Pacific Lutheran University and the School of Nursing are committed to providing equal opportunity in education for all students without regard to a person's race, color, national origin, creed, religion, age, gender, sexual orientation, mental or physical disability, or any other status protected by law. The university community will not tolerate any unlawful discrimination, harassment, or abuse of or toward any member of the university community.

The university holds as basic the integrity and well-being of every person in the community. It is committed to providing an educational environment which is fair, consistent, caring, and supportive of intellectual and personal growth. Further, it is committed to protecting the rights of its community members to engage in dialog and to express ideas in an environment which is free from harassment, discrimination, and exploitation. This freedom of expression does not, however, entail the freedom to threaten, intimidate, harass, or abuse.

The university prohibits any activities which cause or threaten physical or mental harm, suffering, or exhaustion; which demean the dignity and personhood of any individual; or which interfere with one's academic progress. Examples of such actions are verbal threats or abuse, harassment, intimidation, stalking, threatened or actual physical assault, or consistent disregard of the rights and welfare of others. In particular, the university will see as a violation of this

policy, any behavior which communicates a message that is threatening, intimidating, or demeaning or which causes physical harm to a person or persons because of race, color, national origin, creed, religion, age, gender marital status, sexual orientation, mental or physical disability, or any other status protected by federal, state, or local law. Any person or persons who are found to have violated this policy will be subject to disciplinary action up to and including suspension, expulsion, or termination.

PLU's Non-Discrimination Policy

Pacific Lutheran University, in compliance with Titles VI and VII of the Civil Rights Act of 1964, Title IX of the Educational Amendments of 1972 (45 CFR 86), and Sections 503 and 504 of the Rehabilitation Act of 1973, and the Americans with Disabilities Act of 1990, does not discriminate in the administration of any of its educational programs, admissions, scholarships, loans, or other activities or programs on the basis of race, gender, sexual orientation or preference, national or ethnic origin, color, disability, marital status, age, or religious belief.

Inquiries regarding compliance with these statutes and regulations may be directed to the Office of the Vice President for Student Life and Dean of Students, (253) 535-7191, PLU's Title IX Coordinator, Teri Phillips, (253) 535-7187, or to the Assistant Secretary for Civil Rights. U.S. Department of Education, Office for Civil Rights, Switzer Building, 330 C Street S.W., Washington, D.C. 20202.

Inquiries about the School's compliance with student access and privacy rights regarding educational records, under the Family Educational Rights and Privacy Act of 1974, may be directed to the Office of the Vice President of Student Life and Dean of Students or to the Student and Family Educational Rights and Privacy office, U.S. Department of Education, Washington, D.C.

Family Educational Rights and Privacy Act (FERPA)

The School of Nursing follows the PLU [FERPA policy](#) regarding access to educational records. According to the Family Educational Rights and Privacy Act ([FERPA](#)), all students must sign consent to release records in order for educational materials to be placed in student mail folders, be shared with clinical agencies, or used in letters of recommendation.

[Mail folder release forms](#) are distributed to all new students at orientation for educational materials (papers, etc.) to be placed in the SON student mail folders. Students who do not wish to sign a FERPA release for the purposes of the mail folders will need to arrange pick up of any educational materials with the instructor. Any graded coursework or sensitive information will be placed in a sealed envelope.

During new student orientation, all students must sign a [FERPA Release form](#) in order to participate in clinical practicums that allow the School of Nursing to share information with clinical agencies, including results of criminal background checks and drug screenings.

Students often request faculty to write letters of recommendations for scholarships, residencies, employment, and graduate school. Students requesting letters of recommendation must sign

consent to [FERPA Reference-Recommendation Release form](#) specifying what agencies may receive the information.

Interplay between PLU's Student Code of Conduct and the School of Nursing

Each student associated with PLU, including each student in the School of Nursing, is expected to be familiar with and to follow all policies, rules and regulations promulgated by the university, as well as local, state and federal laws. Students are expected to know and follow conduct standards set out in the PLU Student Code of Conduct. Failure to abide by the policies, rules, and regulations may result in disciplinary action(s) outlined in the [Student Code of Conduct](#), up to and including suspension or expulsion from the university.

Nursing programs, by their nature as healthcare professional programs, hold students to higher standards of academic, professional, and behavioral expectations than the general university, so students at the School of Nursing are also expected to know and follow the additional standards specific to the School of Nursing. Those standards are identified throughout this handbook, and are summarized in this policy.

PLU nursing students are required to abide by all policies and standards of the School of Nursing as a minimum expectation for admission, standard program progressions, and for program completion. There are possible conduct-based circumstances where a student would be eligible to continue his or her education at PLU, but not to continue in the School of Nursing.

Readmission to PLU after suspension, for example, does not equate to readmission to return to the School of Nursing, and should not be considered as such. In some situations, for example, conduct may violate professional conduct standards for the nursing profession but may not violate university policy. In any such situation, the School of Nursing reserves the right, in its sole discretion, to take action independent of the Student Conduct Process, through its RAP Committee and Petition process.

If allegations which could constitute a violation of the PLU Student Code of Conduct are made against a student in the School of Nursing, the allegations will be reported to the Office of Student Rights and Responsibilities. The School of Nursing or its representative(s) may in certain circumstances, make the report. The process set out in the Student Code of Conduct will be utilized to determine whether or not the student is "Responsible" for violating the Code of Conduct. If a violation is found to have occurred, sanctions will be determined through that process. Once that determination is made and any appeals are completed, the student's conduct file will be available for review and action by the School of Nursing RAP committee.

The School of Nursing will accept as true the findings of fact made by Review Officers in the university's Student Conduct process. Some sanctions imposed through the Student Conduct Process, such as probation, suspension or expulsion (without limitation) from PLU, will necessarily result in an equivalent probation, suspension or expulsion from the School of Nursing without further action by School of Nursing. The School of Nursing may, on its own initiative and in its own discretion, through its RAP committee, impose additional sanctions based on the

Student Conduct process findings of fact, because Nursing professionals are subject to patient care considerations and related standards in addition to those for students in other fields of endeavor. See, for example, sections in this Handbook on [Professional Conduct and Values of the Nursing Profession](#); [Academic Performance](#); [Professional Misconduct and Safety Issues](#); and [Clinical Practice Policies and Health Requirements / Expectation](#), without limitation.

A student who returns to PLU after probation, suspension or expulsion may petition the RAP committee for re-enrollment in the School of Nursing. Completion of requirements for re-enrollment at PLU must be completed before a petition may be filed with the RAP committee with respect to re-enrollment in the School of Nursing. The [petition process](#) of this Handbook must be followed.

School of Nursing Administrative Offices

Phone: (253) 535-7672 email: nurs@plu.edu

The School of Nursing administrative suite is located in Room 214 of the Ramstad Building. Several administrative offices are located, within the suite, including those of the Dean, Associate Dean for Graduate Nursing Programs, Advisor, Admissions & Student Support Coordinator, and Clinical Placement Coordinator. The office staff also includes the Assistant to the Dean, Senior Office Assistant, Senior Administrative Assistant, and student workers.

The Director of the Center for Continued Nursing Learning (CCNL) Program and Coordinator for the CCNL program are located in Ramstad 201.

In addition to providing support for School of Nursing daily operations, the staff of the School of Nursing serve as an informational resource for students, faculty, other PLU offices, and members of the community. Students are welcome to visit the office during regular operating hours to conduct business, submit assignments and other papers, or to make appointments to meet with nursing administrators.

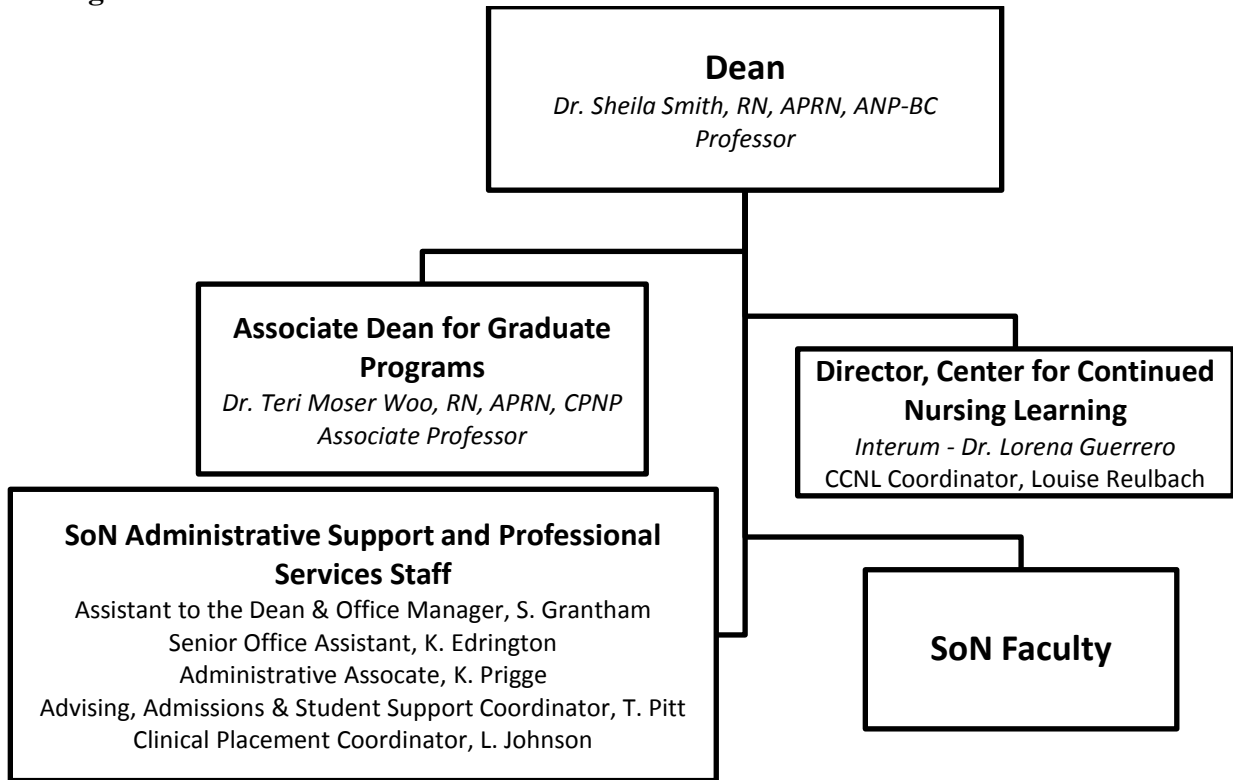
Since interaction with office personnel is as much a component of professional behavior as is performance in the clinical and classroom setting, students are expected to exhibit the same professionalism and courtesy when interacting with any member of the office staff as they would with members of the faculty, student colleagues, and other professionals. As professional office staff, each member is committed to delivering quality service.

In the interest of courtesy and privacy, students are not permitted to enter any individual administrative office without first being invited to do so and should check in with administrative staff. So that confidential information may remain secure, students may not enter the faculty mailroom, also located in the main offices.

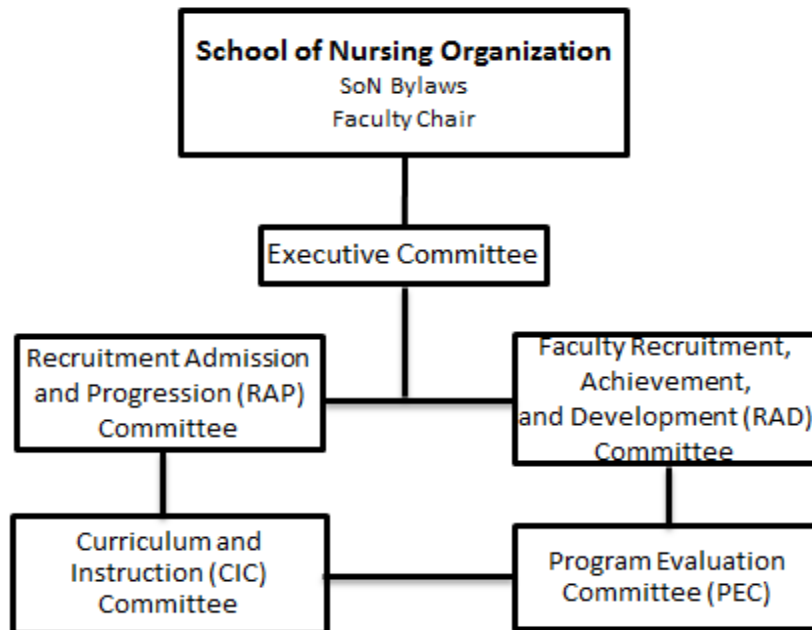
Contact Information for SoN Administrative Personnel

	Telephone	Email
SoN Administrative Offices	(253) 535-7672	nurs@plu.edu
Dean	535-7674	smithsk@plu.edu
Administrative Asst to Dean	535-7674	granthsh@plu.edu
Assoc Dean for Grad Programs	535-7686	wootm@plu.edu
Advisor, Admissions & Student Support Coord	535-7677	tpitt@plu.edu
Clinical Placement Coord	535-7270	johnsolc@plu.edu
CCNL Director	253-535-7374	guerrelc@plu.edu
CCNL Coord	253-535-7683	ccnl@plu.edu

School of Nursing Organization
SoN Organizational Chart



SoN Governance Chart



Communications

Appointments with Administration, Faculty and Staff

Students are welcome to make appointments with the Dean, Associate Dean for Graduate Programs, Advisor, Admission & Student Services Coordinator, and Clinical Placement Coordinator as appropriate. Appointments with the Dean should be made through the office manager/assistant to the Dean. Appointments with the Associate Dean of Graduate Nursing Programs, Advisor, Admission & Placement Coordinator or Clinical Placement Coordinator should be made through the main office.

Students also are welcome to make appointments with faculty and staff as appropriate. Students are encouraged to request appointments via email or the faculty's phone number. Please be aware that many of our faculty teach clinical courses or work in the clinical arena off campus, which may limit availability to meet on campus. Faculty are encouraged to post office hours outside their doors or through the School of Nursing office.

As nursing professionals, students are expected to keep and be on time for scheduled appointments, or, in the event of an emergency, to notify the office or faculty member in advance if scheduled appointments must be cancelled.

Change of Name, Address or Telephone Number

Students are responsible for notifying the School of Nursing and Student Services, and any other appropriate university offices of any changes in name, mailing address, email address, or telephone number in a timely manner. Students who do not keep these offices apprised of this information are still responsible for any information/correspondence sent to them at the last address on file. New identification cards and badges should be purchased accordingly.

Electronic Resources

All students are expected to activate and use the [PLU ePass account](#) and familiarize themselves with the systems provided for them by the university, including email, Sakai and BannerWeb. For assistance with electronic resources, students should contact the [Help Desk](#).

Email

Only official PLU e-mail addresses will be used for communication from the School of Nursing office and School of Nursing faculty and staff. Every student is given a PLU account upon official admission and enrollment at PLU. You can forward all your PLU messages to your preferred e-mail address if you have another e-mail account. Also, e-mail is the main vehicle used by the School of Nursing to provide students vital information about scholarships, announcements, class information, etc. and faculty as well as administrators frequently uses e-mail to communicate with students.

Sakai

[Sakai](#) is used for most courses to distribute course syllabi and announcements. It may also be used for distribution of course materials, assignments, individual and group communications, group discussion, and other communication and educational activities. Additional Sakai project

sites may be created by the School of Nursing office or faculty as a way to contain and distribute information to large groups of nursing students. All students are expected to access Sakai regularly.

BannerWeb

[BannerWeb](#) is used for course registration, course schedules, unofficial transcripts, CAPP reports, and financial aid.

Mail Folders

Nursing student mail folders are in the foyer outside the main office. Nursing students are expected to check their mail folders regularly when they are on campus for classes. The folders are used to return course materials, communicate messages, share information regarding course scheduling and availability of scholarships, and to provide other relevant information. Any graded coursework or sensitive information will be placed in a sealed envelope (see FERPA Release below). Folders may also be used for peer to-peer-communication.

Bulletin Boards

School of Nursing bulletin boards located on landings and in corridors of the second and third floors of Ramstad may be used to distribute information to students.

Changes to Student Policies

Students are notified of changes to student policies through electronic notification via email, Sakai announcements, revisions to the electronic version of the Student Handbooks, and/or postings to the School of Nursing web pages. It is the student's responsibility to check these resources frequently for updates and revisions.

School of Nursing Curriculum

School of Nursing Conceptual Frameworks

The School of Nursing faculty fully embraces these concepts and further hold beliefs about **nursing, persons, environment, and health** which direct the development of programs and guide the educational process.

- **Nursing** is an intellectual discipline that is both an art and a science.
- **Persons** are individuals, families, and communities, and have inherent dignity and worth.
- **Environment** is integral to, and inseparable from person, consisting of both internal and external realms of influence.
- **Health** and wellbeing are defined by all persons within the constructs of the environment in which they live.

Operational Definitions for Conceptual Frameworks

Nursing

Nursing is an art, a humanistic science, and an intellectual discipline of informed caring (Swanson, 1993). Informed caring represents the essence of nursing by reflecting caring as a nurturing way of relating to others toward whom one has a professional commitment and by unifying the diverse knowledge, skills, and processes of nursing into an integrated whole. In the context of “informed caring for the well-being of others” (Swanson, 1993, p. 352), nursing exists as a profession that directs its diverse, integrated elements in a person-centered manner toward assisting person to achieve health, quality of life, well-being, and/or quality of death.

Person

Person represents the client—the central focus of informed caring—and may be an individual, family, community, population, or system. Person includes spiritual, cultural, social, psychological, and bio-physical dimensions. These dimensions are brought by person into any interaction. Person is not only at the center of care, but is also recognized “as the source of control and full partner in providing compassionate and coordinated care.”(QSEN, 2011).

Environment

Environment is local and global and includes, but is not limited to, physical, psychological, cultural, financial, regulatory, technological, and political elements. Environment directly affects a person’s health, health-related behaviors, and overall well-being. The nurse’s concept of environment provides the structure for understanding the impact of multidimensional external elements on person. To facilitate an environment that is conducive to optimum health, the nurse must understand how individual and family relationships, values and beliefs about one’s culture and resources available within the home and community shape environment as well as one’s actual physical living space. The culture of the practice environment—whether inpatient, outpatient, or in-home—is complex and creates the need for interprofessional collaboration and

collaboration with person in order to optimize management of each person's needs within a cost-effective framework. Through the educational experience, it is essential for the nurse to grasp how the dynamic interaction of environmental factors affects health outcomes.

Health

The word "health" derives from the word "whole." Health is reflective of the multidimensional nature of persons. The harmonious interconnectedness of the dimensions of person is necessary to achieve health and well-being. Health and well-being are defined by persons with those definitions being influenced by the constructs of the society and culture in which they live. All persons have the right to access health care and to participate fully in decisions affecting their health, quality of life, and/or quality of death. Persons have significant impact on their health through their life choices. Supporting the optimal health of persons includes disease prevention and promoting healthy lifestyle behaviors, regardless of clinical diagnosis.

Advocacy

A philosophical view in which nursing practice supports the well-being of persons through the promotion of self-advocacy as much as possible and through indirect advocacy by the nurse when required. As a patient advocate, a nurse provides services that support and/or empower the client to support quality of life, promotes patients' rights, and ensures the person's needs and preferences are the primary concern of health professionals. Being an advocate is a significant role for nurses in any setting. Nurse advocates take other leadership roles to educate, improve healthcare delivery, ensure safety and cost-effectiveness of care, have a voice in healthcare policy decisions, and promote nursing by maintaining a positive image of the profession.

Competency

Competency can have several meanings. A nurse who performs at an expected level is demonstrating competence. Competence can be described as the ability to act effectively using critical thinking, efficient problem-solving, and ethical decision-making. Competency can also reflect a measureable level of performance that integrates knowledge, psychomotor, communication, diagnostic and problem-solving skills in clinical practice. The ability to perform at an expected level is the responsibility of the individual nurse and can be achieved through the process of lifelong learning.

Evidence-Based Practice

A problem-solving approach that combines best evidence from current research, the clinician's expertise, and the preferences of each person. As part of a leadership role, the nurse serves as a role model and mentor for staff making evidence-based decisions. Incorporating EBP into nursing care allows the nurse to take ownership of his or her practice by serving as a strong patient advocate and transforming health care through quality improvement.

Informed Caring

The result of applying empirical, aesthetic, ethical, and personal understanding to aspects of a given health interaction with the goals of fostering quality of life and well-being while maintaining belief in, knowing, and intervening on behalf of and enabling the person.

Interprofessional Teams

Healthcare teams include person, the nurse, and other healthcare professionals that cooperate, collaborate, communicate, and integrate care which ensures that healthcare delivery is high-quality, person-centered, continuous, and reliable. The nurse is an integral member of the interprofessional team which strives to establish collegial relationships aimed at improving patient health outcomes through shared respect and trust. The nurse has an awareness of the unique discipline-specific knowledge which can impact patient care. Communication among interprofessional teams includes collaborating to identify shared goals, communicating clear role expectations, and engaging in a flexible decision-making process through the establishment of open communication patterns and leadership.

Liberal Arts Education

Liberal arts education prepares students to understand the world better and to become a contributing member of society, whether local or global. Academic studies cover the arts, humanities, languages, social sciences, and physical sciences. It is this broader understanding of the human condition that is integrated into nursing practice.

Person-centered care

Health care that establishes a partnership among healthcare professionals and clients (or person) to ensure that decisions respect clients' wants, needs, and preferences and that clients have the education and support they need to make decisions and participate in self-care. It also means considering clients' cultural traditions, personal values, family situations, social circumstances and lifestyles. Four key attributes of person-centered care are: (1) "whole person" care, (2) coordination and communication, (3) client support and empowerment, and (4) ready access to healthcare services.

Nursing Informatics

Nursing informatics is a broad field where nursing science merges with technology to enhance the quality of nursing practice through improved communication and overall efficiency. Nurses utilize the concepts of information management to identify, collect, record, analyze, and disseminate data pertinent to safe, quality nursing care. The nurse in advanced practice may have responsibilities for education, research, project management from development through implementation, and systems testing and evaluation. These responsibilities serve to support nursing in direct and indirect care delivery as well as to support the health of people through information processing and communication.

Professional Service

Service is action performed for the benefit of another. Professional service involves specialized education, knowledge, judgment and skill; it is the nature of the action, rather than the person, that identifies service as professional. The nurse will exhibit compassion in all professional relationships and respect the dignity, worth and uniqueness of every person.

Professional Values

Nursing is a caring profession. The values associated with caring include, but are not limited to, compassion, empathy, altruism, integrity, respecting human dignity, and social justice. These core values inform practice and the actions of the nurse.

Quality improvement (QI)

QI is the continuous process of increasing the safety of healthcare delivery, improving the quality of healthcare services, and attaining desired health outcomes. From a clinical perspective, this means avoiding preventable injuries, reducing medical errors, improving practice flow, using evidence-based research in practice, and utilizing resources appropriately. From a systems perspective, this means creating an organizational climate where excellence is valued and practiced. Organizational commitments to quality can include policies, procedures, tools, systems, and performance measures that support a safe and high quality healthcare delivery system.

Transformational Leadership

Leadership is described as transformational when there is a positive change in thinking and movement toward a desired state through creating a vision, goal setting, encouragement and direction. A transformational leader shapes and fosters a unified purpose and continuous quality improvement through open, constructive communication; critical thinking; affirmation of others' beliefs and values; empowerment of individuals; and consistent demonstration of responsibility and accountability.

Ways of Knowing

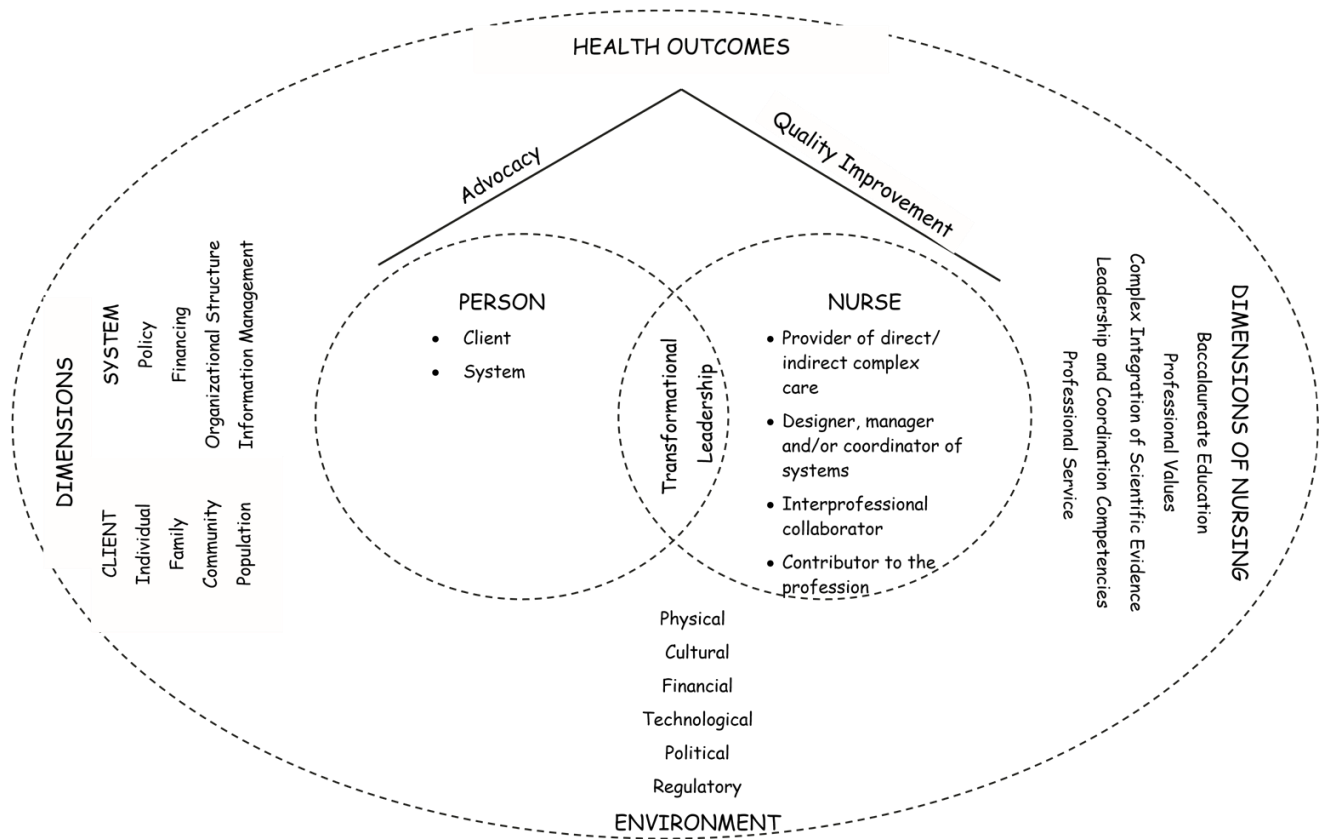
The body of knowledge that a nurse uses in nursing practice is derived from ways of thinking that have fundamental patterns. Understanding these patterns involves attention to what kind of knowing is of value to nursing. Carper (1978) identified four patterns within nursing knowledge:

- (1) ***Empirical knowing*** is concerned with the science of nursing and includes general laws and theoretical frameworks from nursing and related disciplines. The nurse draws from a broad knowledge base to use critical thinking for decision-making and relies on evidence to guide practice.
- (2) ***Aesthetic knowing*** is the art of nursing that is a fluid and dynamic approach to understanding and attaching meaning in a situation. Aesthetic knowing allows the nurse to perceive and empathize with the situations of persons, foster compassion,

- actively listen, and nurture. Nursing as an art is based on caring and respect for human dignity.
- (3) **Personal** knowing is concerned with interactions and relationships between nurse and person. Personal knowing is a way of employing “therapeutic use of self” by viewing the person as a human being, rather than an object or a diagnosis, and understanding the person in his world.
 - (4) **Ethical** knowing is concerned with the “right action” within a situation and the moral obligations inherent in that situation. Ethical knowing goes beyond knowing the norms or ethical code of nursing by recognizing that all voluntary actions are subject to the judgment of right and wrong.

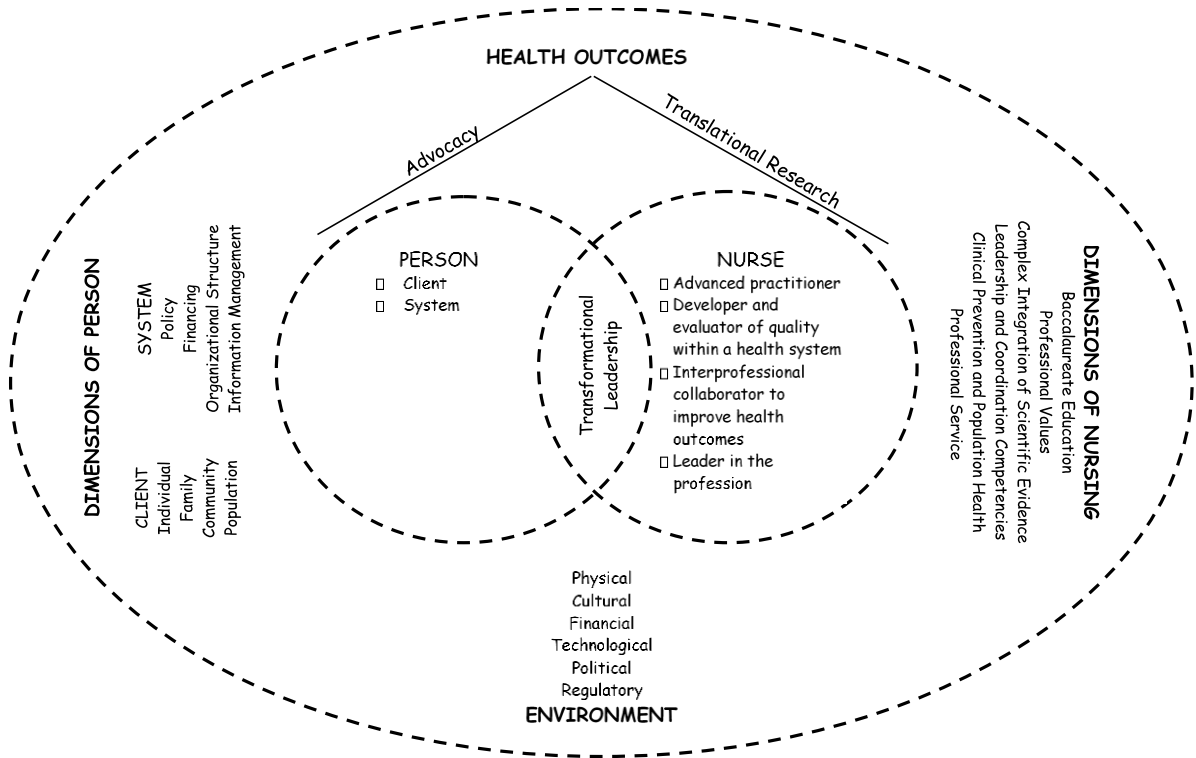
MSN Conceptual Framework

At the graduate level the nurse builds on the baccalaureate foundation by using higher level thinking and conceptualization skills to lead and implement systems change. Master’s-prepared nurses are prepared to lead change by using nursing and related sciences, research evidence, interprofessional collaboration, and informatics/healthcare technologies to design effective person-centered care. Master’s-prepared nurses use integration of scientific evidence in more complex ways to optimize health among persons, whether person represents an individual, family, community, population, or system (which includes the complex dimensions of policy, finance, organizational structure, and information management). The professional relationship between nurse and person is transformational leadership as the nurse interacts with person in four advanced professional roles: 1) Provider of direct/indirect complex care; 2) Designer, manager and/or coordinator of systems; 3) Interprofessional collaborator, and 4) Contributor to the profession. Transformational leadership involves advocating for, implementing, and evaluating change toward the goal of quality improvement by creating and promoting an environment in which person is challenged and supported in envisioning possibilities and transforming shared vision into reality. Through transformational leadership, the nurse values the contribution of each person to the delivery of care, motivates individual and system change by exemplifying behaviors which influence positive outcomes and develop intrinsic quality improvement. The nurse also contributes to a culture of advocacy and safety by establishing an environment of open communication.



Approved May 2012

DNP Conceptual Framework



95.13

School of Nursing Program Outcomes

Master of Science in Nursing Program Outcomes

The PLU Master of Science in Nursing curriculum is based on the American Association of Colleges of Nursing [*Essentials of Master's Education in Nursing \(2011\)*](#) and equips nurses for roles within a complex health system. Master's education at PLU prepares nurses with the knowledge and skills to lead change, promote health, and elevate care, regardless of the setting.

1. Implement evidence-based practice, incorporating theory, models, and science to ensure safe, quality health care.
2. Integrate knowledge of technology, information systems, policy, organization, and financing into the improvement of health care delivery and health outcomes.
3. Demonstrate a commitment to ethical decision making, social justice, and advocacy for vulnerable and diverse populations.
4. Develop and use collaborative leadership and management strategies that foster safety and quality improvement throughout a healthcare system.
5. Advance the profession through collaboration, adherence to nursing standards and values, service, and commitment to lifelong learning.
6. Collaboratively design client-centered strategies for clinical prevention and health promotion.
7. Expand nursing expertise through the application of advanced pathophysiological, pharmacological, and assessment knowledge and skills.

Doctor of Nursing Practice Program Outcomes

The PLU Doctor of Nursing Practice (DNP) program is based on the American Association of Colleges of Nursing [*Essentials of Doctoral Education for Advanced Nursing Practice \(2006\)*](#) and prepares registered nurses to become Family Nurse Practitioners or, if an ARNP from another role or population focus, to advance their practice. Successful completion of the BSN or Non-ARNP MSN to DNP FNP program qualifies students to sit for national certifying examinations for Family Nurse Practitioner, making them eligible under Washington State law for Advanced Registered Nurse Practitioner (ARNP) licensure. All DNP graduates will be prepared to play a key role in providing strong, effective nursing leadership and ensuring the continued quality of patient care and evidence-based outcomes in our nation's health care system.

1. Integrate and actively use science-based theories and concepts in advanced nursing practice.
2. Develop and/or evaluate effective strategies for improvement in practice including risk assessment and quality care delivery approaches that meet current and future needs of patient populations.
3. Integrate and apply current research knowledge to solve complex practice situations while identifying strategies to continuously incorporate and communicate new knowledge.

4. Use information systems/technology to support and improve patient care and healthcare systems.
5. Assume leadership to design, implement, and advocate for health care policy that addresses issues of access, resource management, and equity in health care.
6. Effectively collaborate as a member and/or leader of an interprofessional or a multidisciplinary team to improve health outcomes.
7. Evaluate care delivery models and/or concepts to provide health promotion and risk reduction/illness prevention strategies.
8. Assume the role and distinct skills of the Doctor of Nursing Practice in an area of specialized nursing practice.

Sample Programs of Study

Entry Level Masters

Pre-Licensure		
Year 1		
Summer	NURS 220 Nursing Competencies I NURS 270 Health Assessment and Promotion NURS 320 Nursing Competencies II NURS 580 Advanced Pathophysiology	4 Credits 4 Credits 2 Credits 3 Credits
Fall	NURS 260 Professional Foundations I NURS 330 Pharmacology and Therapeutic Modalities NURS 340 Situations with Individuals: Adult Health I NURS 350 Situations with Individuals: Mental Health	4 Credits 4 Credits 4 Credits 4 Credits
J-Term	NURS 380 Situations with Families: Childrearing (Peds)	4 Credits
Spring	NURS 370 Situations with Families: Childbearing (OB) NURS 430 Situations with Communities NURS 440 Situations with Individuals: Adult Health II NURS 441 Situations Seminar	4 Credits 5 Credits 4 Credits 1 Credit
Year 2		
Summer	NURS 480 Professional Foundations II NURS 499 Nursing Synthesis	2 Credits 6 Credits
MSN Core		
Fall	NURS 523 Role of the Advanced Practice Nurse NURS 525 Theoretical Foundations NURS 526 Leadership and Management	3 Credits 3 Credits 3 Credits
J-Term	NURS 524 Advanced Health Promotion NURS 540 Illness and Disease Management	2 Credits 2 Credits
Spring	NURS 527 Evaluations and Outcomes Research NURS 530 Resource Management	3 Credits 3 Credits

	NURS 531 Care and Outcomes Manager 1	3 Credits
Year 3		
Summer	NURS 532 Care and Outcomes Manager 2 (6) NURS 596 Scholarly Inquiry (2)	6 Credits 2 Credits

Total Credits Pre-Licensure 55 Credits

Total Credits MSN Core 30 Credits

MSN Care and Outcomes Manager

Year 1		
Summer	NURS 580 Advanced Pathophysiology	3 Credits
Fall	NURS 523 Role of the Advanced Practice Nurse NURS 525 Theoretical Foundations NURS 526 Leadership and Management	3 Credits 3 Credits 3 Credits
J-Term	NURS 524 Advanced Health Promotion NURS 540 Illness and Disease Management	2 Credits 2 Credits
Spring	NURS 527 Evaluations and Outcomes Research NURS 530 Resource Management NURS 531 Care and Outcomes Manager 1	3 Credits 3 Credits 3 Credits
Year 2		
Summer	NURS 532 Care and Outcomes Manager 2 (6) NURS 596 Scholarly Inquiry (2)	6 Credits 2 Credits

Total Credits 33

BSN to DNP Full-Time

Year 1		
Summer	NURS 623 Information Systems and Patient Care Technology NURS 625 Epidemiology and Biostatistics	3 Credits 3 Credits
Fall	NURS 523 Role of the Advanced Practice Nurse NURS 525 Theoretical Foundations NURS 526 Leadership and Management	3 Credits 3 Credits 3 Credits
J-Term	NURS 524 Advanced Health Promotion NURS 540 Illness and Disease Management 30 clinical hrs	2 Credits 2 Credits
Spring	NURS 527 Evaluations and Outcomes Research NURS 630 Analytical Methods NURS 531 Care and Outcomes Manager Practicum 1 90 clinical hrs	3 Credits 3 Credits 3 Credits
Year 2		
Summer	NURS 582 Advanced Health Assessment 30 clinical hours NURS 583 Clinical Pharmacotherapeutics NURS 580 Advanced Pathophysiology	3 Credits 3 Credits 3 Credits
Fall	NURS 584 Family Nurse Practitioner Practicum I 180 hrs clinical NURS 561 Primary Care Mental Health	5 Credits 2 Credits
J-Term	International/Global Elective	
Spring	NURS 631 Translating Research into Nursing Practice NURS 585 Family Nurse Practitioner Practicum II 180 hrs clinical NURS 530 Resource Management	3 Credits 5 Credits 3 Credits
Year 3		
Summer	NURS 562 Women and Children 120 hrs clinical NURS 681: Scholarly Project Proposal 30 hrs clinical	4 Credits 2 Credits
Fall	NURS 627 Health Policy NURS 682 DNP Project I 120 hrs clinical NURS 594 FNP Clinical Capstone 120 clinical hours	3 Credits 3 Credits 3 Credits
J-Term	NURS 683 DNP Project II 30 hrs clinical	2 Credits
Spring	NURS 684 DNP Project III 120+ hrs of clinical NURS 699 DNP Scholarly Project: Capstone NURS 695 Transition to DNP Practice	4 Credits 2 Credits 1 Credit

Total Credits 79
Total post-BSN clinical hrs: 1050
Total FNP clinical hrs: 630

BSN – DNP Part-Time

Year 1		
Summer	NURS 623 Information Systems and Patient Care Technology NURS 625 Epidemiology and Biostatistics	3 Credits 3 Credits
Fall	NURS 523 Role of the Advanced Practice Nurse NURS 525 Theoretical Foundations	3 Credits 3 Credits
J-Term	NURS 524 Advanced Health Promotion NURS 540 Illness and Disease Management 30 clinical hrs	2 Credits 2 Credits
Spring	NURS 527 Evaluations and Outcomes Research NURS 531 Care and Outcomes Manager Practicum 1 90 clinical hrs	3 Credits 3 Credits
Year 2		
Summer	NURS 580 Advanced Pathophysiology	3 Credits
Fall	NURS 526 Leadership and Management NURS 627 Health Policy	3 Credits 3 Credits
J-Term	None	
Spring	NURS 630 Analytical Methods NURS 530 Resource Management	3 Credits 3 Credits
Year 3		
Summer	NURS 582 Advanced Health Assessment 30 clinical hours NURS 583 Clinical Pharmacotherapeutics	3 Credits 3 Credits
Fall	NURS 584 Family Nurse Practitioner Practicum I 180 hrs clinical NURS 561 Primary Care Mental Health	5 Credits 2 Credits
J-Term	International/Global Elective	
Spring	NURS 585 Family Nurse Practitioner Practicum II 180 hrs clinical NURS 631 Translating Research into Nursing Practice	5 Credits 3 Credits
Year 4		
Summer	NURS 562 Women and Children 120 hrs clinical NURS 681: Scholarly Project Proposal 30 hrs clinical	4 Credits 2 Credits
Fall	NURS 594 FNP Clinical Capstone 120 clinical hours NURS 682 DNP Project I 120 hrs clinical	3 Credits 3 Credits
J-Term	NURS 683 DNP Project II 30 hrs clinical	2 Credits
Spring	NURS 684 DNP Project III 120+ hrs of clinical NURS 699 DNP Scholarly Project: Capstone NURS 695 Transition to DNP Practice	4 Credits 2 Credits 1 Credit

Total Credits 79
Total post-BSN clinical hrs: 1050
Total FNP clinical hrs: 630

MSN – DNP Non-ARNP

Year 1		
Summer	NURS 625 Epidemiology and Biostatistics NURS 582 Advanced Health Assessment 30 clinical hours NURS 583 Clinical Pharmacotherapeutics	3 Credits 3 Credits 3 Credits
Fall	NURS 584 Family Nurse Practitioner Practicum I 180 hrs clinical NURS 627 Health Policy NURS 561 Primary Care Mental Health	5 Credits 3 Credits 2 Credits
J-Term	None	
Spring	NURS 631 Translating Research into Nursing Practice NURS 630 Analytical Methods NURS 585 Family Nurse Practitioner Practicum II 180 hrs clinical	3 Credits 3 Credits 5 Credits
Year 2		
Summer	NURS 681: Scholarly Project Proposal 30 hrs clinical NURS 562 Women and Children 120 hrs clinical NURS 623 Information Systems and Patient Care Technology	2 Credits 4 Credits 3 Credits
Fall	NURS 682 DNP Project I 120 hrs clinical NURS 594 FNP Clinical Capstone 120 clinical hours	3 Credits 3 Credits
J-Term	NURS 683 DNP Project II 30 hrs clinical	2 Credits
Spring	NURS 684 DNP Project III 120+ hrs of clinical NURS 699 DNP Scholarly Project: Capstone NURS 695 Transition to DNP Practice	4 Credits 2 Credits 1 Credit

Total Credits 54

Total post-BSN clinical hrs: >1000

Total FNP clinical hrs: 630

Post ARNP – DNP

Year 1		
Summer	NURS 623 Information Systems and Patient Care Technology NURS 625 Epidemiology and Biostatistics	3 Credits 3 Credits
Fall	NURS 627 Health Policy	3 Credits
J-Term	None	
Spring	NURS 631 Translating Research into Nursing Practice NURS 630 Analytical Methods	3 Credits 3 Credits
Year 2		
Summer	NURS 681: Scholarly Project Proposal 30 hrs clinical	2 Credits
Fall	NURS 682 DNP Project I 120 hrs clinical	3 Credits
J-Term	NURS 683 DNP Project II 30 hrs clinical	2 Credits
Spring	NURS 684 DNP Project III 120+ hrs of clinical NURS 699 DNP Scholarly Project: Capstone NURS 695 Transition to DNP Practice	4 Credits 2 Credits 1 Credit

Total Credits 29

Special Programming Opportunities

Nursing Study-Away Programs

Nursing Study-Away programs have been developed in conjunction with the PLU global education programs in Windhoek, Namibia and in Chengdu, China. Application to the programs is made through the Wang Center for Global Education. Nursing study-away programs are offered as resources and enrollments permit.

Chengdu, China Study-Away

This is an elective, J-term study-away program for nursing and non-nursing students, focusing on traditional Chinese medicine, western healthcare approaches used in China, and Chinese cultural immersion. PLU nursing faculty travel with students to study traditional Chinese medicine and culture.

Comprehensive Geriatric Education Program (CGEP)

Documents are currently being revised and will be released when available.

Student Governance/Organizations

Student Participation in School of Nursing Governance

Student input is a very important piece to governing the School of Nursing and creating effective change. We encourage and welcome input from students about courses, faculty, and activities in the School of Nursing. One mechanism in place to facilitate this process is participation on relevant committees. Another is in the selection of new tenure-track faculty and evaluation of faculty.

Recruitment Admission and Progression (RAP) Committee

This committee oversees recruitment of future students, reviews student applications, reviews student issues and petitions, implements policies and procedures that pertain to recruitment, admissions, and progression within the School of Nursing, and oversees the recognition ceremonies. One undergraduate and one graduate student sits on the committee. As student positions become available, the School invites interested students to volunteer. Appropriate nursing faculty choose the student representatives.

Curriculum, Instruction, and Evaluation (CIE) Committee

This committee oversees all curriculum, instruction, and evaluation policies, procedures, revisions, and issues within the School of Nursing. Three students sit on the CIE committee, 1 undergraduate student, 1 ELM student, and 1 MSN/DNP student. As student positions become available, the School invites interested students to volunteer. Appropriate nursing faculty choose the student representatives.

Student Advisory Councils

Two Dean's Student Advisory Councils have been developed to foster open communications, participation, and productive engagement in continuous improvement processes. Members of the Student Advisory Councils serve as representatives of their respective cohorts and bring input and perspectives from their student peers to share with one another and with the Dean. The Dean meets regularly with the Student Advisory Councils throughout the academic year.

Undergraduate Student Advisory Council

The Undergraduate Student Advisory Council is comprised of members of the sophomore II, junior II, and senior II class. Membership is by appointment of the dean and continues through the student's program of study. Meetings are held monthly during the fall and spring semesters.

Graduate Student Advisory Council

The Graduate Student Advisory Council is comprised of members of the ELMSN, MSN, and DNP programs. Membership is by appointment of the dean and continues through the student's program of study. Meetings are twice each semester during the fall and spring terms and once during the summer session.

Student Open Forums

Student open forums are held once or twice annually and are organized as open conversations with the School of Nursing Dean. The forums provide an additional mechanism for student input

into program planning and continuous quality improvement. All nursing students are welcome and encouraged to attend.

Student Participation in Program Evaluation

Student Evaluation of Courses and Faculty

Student evaluations of courses and teaching performance are secured at least once for each course every semester and are one element of faculty evaluation, along with faculty self-evaluation and the Dean's evaluations of faculty. Faculty members are reviewed for promotion and/or tenure (permanent retention) by the PLU Rank and Tenure Committee according to the schedule established by the university. Names of faculty being reviewed are published. The PLU Rank and Tenure Committee solicits recommendations from faculty. However, additional recommendations may be submitted by any student or faculty member. The Rank and Tenure Committee evaluates all submitted information when making recommendations to the president for promotion and/or tenure.

End-of-Program Student Surveys and Meetings

End-of Program Surveys are administered to graduating students from each of the BSN, MSN, and DNP degree programs during finals week. In addition, the graduating classes are scheduled for a group exit interview with the Dean, for purposes of program evaluation and continuous improvement.

Student Participation in Faculty Recruitment

Students may participate, on an informal basis, in interviews with applicants for faculty positions. Notice of visits by applicants may be extended in class or posted on the official bulletin board. Students interested in participating in summer interviews, if any, should notify the Dean's administrative associate of their interest and willingness to be contacted.

Student Organizations and Organizations of Student Interest

Associated Students of PLU

The Associated Students of PLU ([ASPLU](#)) serves as the representative voice of students in promoting excellence in all aspects of PLU life. It provides for active participation by all students through its committee structure. Nursing students are encouraged to participate in the university-wide student governance by becoming involved in the many ASPLU committees and activities.

Delta Iota Chi

[Delta Iota Chi](#) is PLU's Nursing Service Club and constituency school for the National Student Nurses Association. Their mission is to promote and encourage leadership through networking, community service and advocacy. Students can also hold membership in the [Nursing Students of Washington State](#) (NSWS) and the [National Student Nurses' Association](#) (NSNA). Membership in these organizations is voluntary and helps prepare nursing students to assume the roles and responsibilities of the professional nurse and offers networking avenues and opportunities for professional service. All PLU nursing students are eligible to become members of Delta Iota Chi, NSWS and NSNA.

Sigma Theta Tau Psi Chapter-at-Large International Nursing Honor Society

In 1922, six nursing students at Indiana University founded [Sigma Theta Tau](#), the honor society of nursing, to (1) encourage continuing superior scholarship and leadership among nurses and (2) provide a mechanism for recognition of nurses who achieved a high level of scholarship or demonstrated leadership in nursing. Today, Sigma Theta Tau is an international society composed of more than 300 chapters. It includes those in Canada, Korea, and Taiwan and has over 150,000 members.

The name Sigma Theta Tau comes from the Greek letters Storga, Tharos, and Tima meaning Love, Courage, and Honor. The purposes of the society are to:

- recognize superior achievement
- encourage leadership development
- foster high nursing standards
- stimulate creative work
- strengthen the commitment to the ideals of the profession

The PLU Nursing Honor Society recognizes students who demonstrate outstanding scholarly achievement and professional promise. The PLU School of Nursing participates in [Psi Chapter-at-Large of Sigma Theta Tau](#), along with Seattle Pacific University and the University of Washington.

All graduate nursing students in good standing are considered for Sigma Theta Tau membership. Eligible graduate students must:

1. have successfully completed one quarter (25%) of the graduate nursing program;
2. have a cumulative GPA of 3.5 or higher; and
3. meet the expectation of academic integrity

Nominations are processed by Sigma Theta Tau in January of each year.

SoN Alumni Association

The Nursing Alumni Association was established in 1991. Today it includes well over 3,000 women and men who've graduated from PLU's Bachelor of Science in Nursing (BSN) and Master of Science in Nursing (MSN) programs since 1953. The Alumni Association works for the professional advancement and recognition of nursing at Pacific Lutheran University and promotes fellowship among members. The Alumni Association recognizes professional excellence and the achievements of PLU nursing alumni. The Association provides support to the School of Nursing through contributions of money and time.

School of Nursing Orientation & Ceremonies

School of Nursing Orientation

An orientation session is held prior to the beginning of nursing coursework. The orientation session provides an opportunity for students to meet faculty, staff, administrators, and fellow classmates, as well as to learn specific School of Nursing policies, procedures and requirements. Since information vital to integration to the program is discussed during this time, all students are expected to attend the orientation session.

Opening Convocation

Each academic year formally begins with the University Convocation, held the first day of each fall semester. Steeped in rich tradition, the ceremony is designed to welcome new students and faculty-as well as to recognize new appointments, achievements and honors earned by both faculty and students. Classes are suspended during the ceremony. All students and faculty are highly encouraged to participate in opening ceremony events.

School of Nursing Recognition Ceremony

The Recognition Ceremony, which includes presentation of school pins along with other awards and recognition, is held for the graduating nursing students. The ceremony is planned by the School of Nursing and the graduating students and represents a long-standing tradition of schools of nursing. Participation in the Pinning/Recognition ceremony is limited to students who are graduating from one of the PLU SoN nursing degree programs.

Students are expected to adhere to all professional conduct and values of professional nursing and essential qualification standards as outlined in the student handbook during the planning and participation of the ceremony. Students who violate these standards may not be granted admittance to the ceremony or may be escorted from the ceremony. Students may also incur a deduction of professionalism points from their senior II level courses for breaches of professionalism during this School of Nursing Event.

Commencement

The university holds a formal commencement ceremony in May. Although nursing students are also recognized during the School of Nursing's Recognition Ceremonies, the School highly encourages the participation of nursing students in the university's commencement ceremony. See [PLU's Office of the Registrar Graduation Information](#) for applicable requirements, policies, and information.

Student Awards and Scholarships

Students may apply for Nursing-specific scholarships on an annual basis. Undergraduate and graduate students are emailed an application form during Spring Semester each year and must comply with the due dates assigned. All applicants will be considered by the Recruitment, Admission, and Progression (RAP) Committee for any scholarship for which the student qualifies. Scholarships available for award by the School of Nursing vary each year in criteria and amount. Many students apply each year; meeting the criteria for a scholarship does not

guarantee an award. Students are notified of scholarship awards through the PLU Financial Aid Office.

The Ruth Carlson Excellence in Clinical Nursing award is awarded by the faculty to one student from each graduating class, on the basis of excellence in clinical performance during student clinical experiences. The award is provided through the generous support of the Carlson family in recognition of their mother and her strong values in support of baccalaureate nursing education, Mrs. Ruth Carlson.

School of Nursing and PLU Resources

Faculty Advisor

The School of Nursing is committed to the successful progression of its students, not only through the nursing curriculum, but through the university's academic program as well. An important part of this commitment is the assignment of a nursing faculty advisor. Upon entrance to the School of Nursing, all nursing students are assigned an academic advisor from the nursing faculty. Student contact with the advisor early in the academic career can be highly instrumental in students' future success. Students are expected to confer with their advisor each semester to review their progress in the university and nursing curricula. Students are expected to respond to the advisor's request for conferences. Advisors are available during posted office hours or by special appointment. Please see section [Academic Advising](#) within this Student Handbook for more information.

School of Nursing Learning Laboratories

The School of Nursing maintains a nursing skills lab, a simulation lab, a computer laboratory, and a health assessment lab.

Students are scheduled for specific laboratory times to practice those skills taught in the curriculum. Open laboratory times are also available for individual practice and study. Skill acquisition requires hands-on practice and students are expected to use these times to achieve skill competency. Additionally, some lab supplies may be checked out to students for use related to a nursing course. To check out models or supplies, students will need to contact the lab coordinator. Information about courses, events, open labs, and coordinator contact information is available on the Learning Laboratory bulletin board.

Food and drinks are not allowed in any of the laboratories. When practicing in the skills lab and simulation lab it is expected all students will wear a scrub top, closed toed shoes, and have their hair away from their face unless otherwise instructed. It is encouraged that all students, when practicing in the labs, practice as if they were in a real clinical situation. When students are done working in the labs, be sure that tables, chairs, and beds are straightened and supplies and equipment are returned to their designated places for re-use or recycling.

Please be advised that a Learning Resources Center fee is charged each semester during the nursing program for purchase and maintenance of equipment, materials, supplies, computer materials, software as well as pay for standardized testing and clinical consortium fees. The fees are paid with tuition following registration for specific courses in a manner which ensures that only one fee is charged per semester.

University Services

Pacific Lutheran University challenges students to succeed to the best of their ability academically, provides them support to reach their academic and personal goals, and prepares them for a lifetime of success, both in their careers and in service to others. There are a wide variety of services available on campus to foster student success.

Ramstad Commons

[Ramstad Commons](#) is committed to fostering academic success and excellence by providing PLU students with valuable tools and resources important for a high-quality college education. From picking classes to picking a major to picking up skills necessary for success now and after graduation, we can help you design a PLU experience tailored to your needs, interests, motivations, and goals.

Academic Advising

[Academic Advising](#) is located in Ramstad 112. Academic Advisors at PLU are committed to assisting students as they discover and define their educational, personal, and emergent life goals.

Academic Assistance

[Academic Assistance](#) is located in Mortvedt Library, Room 124. This office provides one-on-one peer tutoring, drop-in labs, group study sessions, language tables, and a variety of student success workshops. Call 253-535-7518 to schedule a tutoring appointment.

Career Connections

[Career Connections](#) is located in Ramstad 112. The Career Connections office offers a variety of services and resources for first year college students choosing their major to seniors needing help writing a resume and beginning their job search. Check out the web site for more information about career assessments, career counseling, job search skills, career fairs, and more.

Community Service and Engagement

[Center for Community Engagement and Service](#) is located in Ramstad 116. The center is here to help you get connected to the community! The Center for Community Engagement and Service coordinates and encourages initiatives for service and involvement at PLU.

Disability Support Services

[Disability Support Services](#) is located in the University Center, Room 300. The DSS Office provides classroom accommodations to students with documented disabilities. Please visit our web page for additional information.

On-Campus Employment

[Student Employment](#) is located in Ramstad 112. Whether you are seeking an on-campus, off-campus, or state work study job, this office can assist you in finding opportunities. Jobs are posted on the Student Employment web site.

Library

The [Mortvedt Library](#) Services website is your portal to the PLU library collection. You can search our library catalog, online databases, indexes, and encyclopedias, and access most of our periodical collection online. Other library services include: Inter-Library Loan, Computer labs, Study rooms, The Writing Center, and Help Desk

Writing Center

The Writing Center can assist you in writing your papers by developing an outline, revising drafts, and demonstrating academic integrity. Students are expected to make use of the writing center independently and pro-actively, as needed to improve writing skills at all levels.

Help Desk

The Help Desk can assist you with your laptop computer. PLU provides free antivirus software for all students (www.plu.edu/anti-virus). All computers on campus must have functional antivirus software before a computer can be connected to the network.

Financial Aid & Student Services

The [Student Services Center](#) is a centralized location that simplifies the already complicated lives of students by providing services for three frequented offices on campus: [Office of Financial Aid](#), [Registrar's Office](#), and [Student Accounts](#). The Center focuses on assisting and empowering students with their academic process through registration, financial assistance, account financing, and [Veteran's assistance](#).

Military & Veteran's Services

PLU stands ready to welcome military vets with a complete veterans support cadre including a Director of Military Outreach, VA Certifying Officials, Vet Corps Navigators and more. Veteran Services at PLU begins with the Director of Military Outreach (DMO.) The DMO supports military affiliated students so they can focus on their academics by working with and finding resources within community resources and military transition authorities. Students eligible to receive VA benefits, must contact the VA Certifying Officials in the Student Services Center and submit the necessary paperwork for certification. The student must turn in the PLU Certification request form each term to insure continuous receipt of benefits. PLU also has a Washington State Department of Veterans Affairs and AmeriCorps trained Vet Corps Navigator. The Navigator's job is to help connect students with supportive opportunities, resources, and people both on and off campus. This navigator is also a veteran of the military and a veteran of the higher education system making them uniquely qualified to assist newly transitioning veterans and their family members as they embark on their new adventure at PLU. For military and veteran's resources on campus, please contact Mike Farnum at mike.farnum@plu.edu.

Bookstore

The [Garfield Book Company](#) at PLU provides textbooks, general books, Lute gear and supplies. The store is located on the corner of Garfield Street and Pacific Avenue.

Student Life

[Student Life](#) provides opportunities for experiential learning, leadership and service; programs that support students physically, emotionally, ethically and intellectually; and programs that are just for fun.

Counseling Center

All of us at PLU recognize that college presents a wide range of challenges. College is a time for personal growth, learning, and self-knowledge, but it isn't always easy. Some students need a place to develop coping skills for social, academic, and personal growth. Other students face more complex problems like anxiety, depression, and similar concerns.

The team of licensed psychologists and mental health counselors at the [Counseling Center](#) are well prepared to help you make the most of your educational experience. All services are provided at no charge for students who are attending classes.

The PLU Counseling Center is located on the third floor of the Loren and MaryAnn Anderson University Center. During the academic year, the center is open Monday through Friday 8:00 am to 5:00 pm, closed daily from 12:00 noon to 1:00 pm for lunch. Contact: 253-535-7206 or councen@plu.edu

Student Health Services

The [Health Center](#) offers health care to PLU students (regardless of insurance), including illness and injury care and physicals. Many services are offered at no cost. Medical health insurance is strongly recommended for all graduate students, though not required. The university does not provide medical insurance for graduate students. During the academic year, the Health Center is open Monday through Friday 8:00 am to 5:00 pm, closed daily from 12:00 noon to 1:00 pm for lunch. Contact: 253-535-7337 or health@plu.edu

Fitness Services

Fitness facilities, such as the pool, Names Fitness Center, Olson and Memorial gyms, outdoor tennis courts and track are available for everyone's use and are administered by the [Department of Athletics](#).

Wang Center for Global Education

The Wang Center for Global Education coordinates university study-away programs and provides support to the university's internationally-focused academic programs. Students interested in study-away opportunities are encouraged to explore the Wang Center website and informational resources.

Campus Ministry

[Campus Ministry](#) provides opportunities and a safe place for the PLU community to explore issues of faith and spirituality through campus activities and individual counseling.

Campus Safety

The [Campus Safety](#) department is privately run by the University, utilizing professional staff as well as 60-70 student employees. The purpose of the Campus Safety office is to provide an effective operating force of trained personnel to protect the university and its community from fire, theft, intrusion and other unlawful acts that disturb the peace or which place life and property in jeopardy. The Director of Campus Safety, Greg Premo, is also a Sargent in the Pierce County Sheriff's Department.

Diversity Center / Women's Center

The goal of the [PLU Diversity Center](#) is to be an inclusive and inviting space for students to congregate and enjoy community. The Diversity Center has weekly and monthly activities that provide unique opportunities to learn about and socialize with other cultures. Likewise, the [Women's Center](#) promotes gender equity by providing resources and programs that empower women and men to work for justice and social change.

Title IX Resources

Students of the School of Nursing are encouraged to utilize the university's [Title IX resources](#) as set out in the university's [Title IX Policy](#) and the [Sexual Misconduct Policy](#) if presented with a situation where they may have experienced discrimination on the basis of gender. Additional information about this topic is found in the following sections of this Handbook: [Intimate & Sexual Relationships](#), [Sexual Misconduct](#), and [Pregnancy](#).

Professional Conduct and Values of the Nursing Profession

Nursing is consistently rated as one of the most trusted professions based on honesty and ethical standards. The nursing profession is governed by a Code of Ethics and a core set of values to which faculty and students are held. Professional values and their associated behaviors are foundational to the practice of nursing and are upheld in all aspects of the PLU School of Nursing and its educational programs. The required professional standards and guidelines for nursing and healthcare professions education are necessarily higher than for other academic programs.

The following professional standards and guidelines, values, professional behaviors, and expectations for conduct are adhered to as minimum standards and included as elements of academic performance criteria. As such, all expectations for academic performance apply and may be the basis for the citation of academic deficiencies and consequences for program progressions, up to and including dismissal from the program.

Code of Ethics

The [Code of Ethics for Nursing](#) created by the American Nurses Association (ANA) is the gold standard for ethical professional and practice conduct. All faculty and nursing students at PLU School of Nursing are held to this code of ethics “for carrying out nursing responsibilities in a manner consistent with quality in nursing care and the ethical obligations of the profession” ([ANA, 2014](#)).

Values and Professional Behaviors

Baccalaureate and graduate education for professional nursing include processes that foster the development of values, attitudes, personal qualities, and value-based professional behaviors. Values are defined as beliefs or ideals to which the individual is committed and which guide behavior. Values are reflected in attitudes, personal qualities, and consistent patterns of behavior. Attitudes are inclinations or dispositions used to respond to persons or situations, while personal qualities are innate or learned attributes of an individual. Professional behaviors reflect the individual’s commitment to specific professional values.

The professional nurse must adopt characteristics such as independence, assertiveness, self-esteem, and confidence, as well as demonstrating compassion, acceptance, consideration, and kindness. Adoption of essential values leads the nurse to a sense of commitment and social responsibility, sensitivity and responsiveness to the needs of others, and a responsibility for oneself and one’s actions (AACN, 2008).

The School of Nursing regards the following values, adapted from [The Essentials of Baccalaureate Education for Professional Nursing Practice](#) (AACN, 2008) as necessary for the professional nurse. Examples of attitudes, personal qualities, and professional behaviors are included that reflect a commitment to one or more of these values. Students are expected to adhere to these values and behaviors in all SoN initiatives.

Values, Attitudes, and Behaviors in Professional Nursing

Essential Values in Professional Nursing	Examples of Attitudes & Behaviors	Examples of Professional Behaviors in Nursing
<p>ALTRUISM: Concern for the welfare and well-being of others; reflected by the nurse's concern for the welfare of patients, family members, society at large, other nurses, and other healthcare providers</p>	<ul style="list-style-type: none"> • Caring • Commitment • Compassion • Generosity • Perseverance 	<p>-Understanding of cultures, beliefs, and perspectives of others -Advocates for patients, particularly the most vulnerable -Takes risks on behalf of patients and colleagues -Mentors other professionals</p>
<p>AUTONOMY: The right to self-determination; reflected when the nurse respects patients' rights to make decisions about their health care.</p>	<ul style="list-style-type: none"> • Confidence • Hope • Independence • Openness • Self-Direction • Self-Discipline • Boundary Sensitivity 	<p>-Plans care in partnership with patients -Honors the right of patients and families to make decisions about healthcare -Provides information so patients can make informed choices</p>
<p>HUMAN DIGNITY: Respect for the inherent worth and uniqueness of individuals, families, and populations; reflected when the nurse values, respects, and upholds the rights of all patients and colleagues</p>	<ul style="list-style-type: none"> • Consideration • Respect • Empathy • Humaneness • Kindness • Trust 	<p>-Provides culturally competent and sensitive care -Protects the patient's privacy -Preserves the confidentiality of patients and healthcare providers -Designs care with sensitivity to individual patient needs</p>
<p>INTEGRITY: Acting in accordance with an appropriate code of ethics and accepted standards of practice; reflected when the nurse is honest and provides quality care based on an ethical framework that is accepted within the profession</p>	<ul style="list-style-type: none"> • Accountability • Authenticity • Honesty • Inquisitiveness • Rationality • Reflectiveness 	<p>-Provides honest information to patients and the public -Documents care accurately and honestly -Seeks to remedy errors made by self or others -Demonstrates accountability for own actions</p>
<p>SOCIAL JUSTICE: Upholding moral, legal, and humanistic principles for all members of society; reflected when the nurse works to ensure equal treatment under the law and equal access to high quality health care</p>	<ul style="list-style-type: none"> • Courage • Integrity • Risk-taking • Morality • Objectivity • Conviction 	<p>-Supports fairness and non-discrimination in the delivery of care -Demonstrates respect and human care for all persons -Promotes universal access to healthcare -Encourages legislation and policy consistent with the</p>

		advancement of nursing and healthcare
--	--	---------------------------------------

Adapted from *The Essentials of Baccalaureate Education for Professional Nursing Practice* (AACN, 2008)

Integrity and Academic Integrity

Integrity is an essential characteristic for nursing students and practicing nurses. Integrity involves the demonstration of honesty, trustworthiness, accountability, truthfulness, and reliability. The practice of the profession of nursing involves close interactions with a wide range of individual and groups of clients. The nurse must act to safeguard those clients and the public in matters of health care and safety. One aspect of professionalism is the maintenance of one's own integrity.

Academic integrity is honesty concerning all aspects of academic performance including clinical performance and is imperative for nursing students. Nursing is a trusted profession and academic dishonesty is considered a very serious matter. Academic integrity in the classroom is defined in the [PLU Student Rights and Responsibilities](#). Academic integrity in the clinical setting involves accurately representing one's actions with clients, upholding expectations for evidence-based practice, and demonstrating competency in clinical judgment and practice.

Academic dishonesty or other breaches of integrity may result in dismissal from the School of Nursing.

Social Media and Electronic Communication

The use of social media and other electronic communication has become commonplace in our everyday lives. Every day new outlets, platforms, and applications are created and individuals are increasingly participating in blogs, social networking sites, video sites, online chat rooms and forums in both a personal and professional manner. “The very nature of this medium, however, can pose a risk as it offer instantaneous posting opportunities that allow little time for reflective thought and carries the added burden that what is posted on the internet is discoverable by a court of law even when it is long deleted” (NCSBN, nd.).

Nurses and nursing students are welcome to utilize social media but must be very careful in posting information and stories about clinical experiences on social media sites as these may be breaches of patient privacy and confidentiality which is a violation of state and federal laws. Instances of inappropriate use of social and electronic media may be reported to the School of Nursing and/or Board of Nursing. The School of Nursing and/or Board of Nursing may investigate reports of inappropriate disclosures on social media sites by a nurse on the grounds of:

- Unprofessional conduct;
- Unethical conduct;
- Moral turpitude (defined as conduct that is considered contrary to community standards of justice, honesty or good morals);
- Mismanagement of patient records;
- Revealing a privilege communication; and
- Breach of confidentiality

If the allegations are supported, the nurse may face disciplinary action by the School of Nursing and/or the Washington Nursing Commission, including a reprimand or sanction, removal from the nursing program, assessment of a monetary fine, temporary or permanent loss of licensure, as well as potential civil and criminal penalties. “A nurse may face personal liability and be individually sued for defamation, invasion of privacy or harassment. Particularly flagrant misconduct on social media websites may also raise liability under state or federal regulations focused on preventing patient abuse or exploitations.” (NCSBN, n.d.)

For more information on Social media use see the social media policies by the [NCSBN](#) and [NSNA](#).

In addition, nurses and student nurses need to adhere to professional boundaries. To maintain the professional therapeutic relationship student nurses should refrain from “friending” or “following” patients and their families. Students should also refrain from “friending” or “following” the personal social networking sites of School of Nursing faculty/staff while a student at PLU. Students should be aware of professional boundaries and confidential communications within the School of Nursing, just as in the clinical setting. Social media and electronic communication methods such as Linked-in, webinars, web conferencing tools, etc. should be only utilized between students and School of Nursing faculty/staff if it promotes student learning, professional development, academic advising, or assists the faculty/staff in educational pedagogy. Social media and electronic communication methods should still adhere to professional boundaries.

Netiquette

“Netiquette” refers to the etiquette of online communication. The rules of netiquette were created by Virginia Shea and can be looked into in more depth on the [Netiquette website](#). The core of netiquette includes the same principles that are used in all other realms of interpersonal communication and professional relationships. Online communications last forever and can be used in a court of law. To prevent harm and avoid later and/or unintended consequences, be sure to present yourself in a professional manner in all communications:

- Do not include other people in conversations that should be a private.
- Be respectful of others’ time by being clear and concise.
- The tone of an online communication can be easily misinterpreted, address the meaning, not the words.
- Do not send angry emails. Discipline yourself to take a cooling off period, to think clearly on the situation and your response.
- If you would not make a particular statement to a person in front of you, you should not say it online.
- Be forgiving of other people’s mistakes.
- Don’t read into other people’s messages with your own interpretations or assumptions.
- Request clarification of a message if it is ambiguous, unclear, or incomplete.
- Pick up the phone or have a face-to-face conversation when complex matters or sensitive topics are involved.

Intimate and Sexual Relationships

Nursing students are strongly advised to recognize appropriate professional boundaries. As such, they are advised to refrain from inappropriate intimate or sexual relationships with classmates or clinical agency personnel. Intimate and/or sexual relationships with faculty or members of the instructional team are strictly prohibited. Maintenance of appropriate personal and professional boundaries is an essential component of professional relationships and does not include the inappropriate engagement in personal intimacies, sexual contact, or sexual coercion.

Sexual misconduct of any kind is not tolerated and will be addressed through PLU's Student Conduct System. For more information see [Sexual Misconduct](#) section within this Student Handbook. All suspected inappropriate relationships will be reported to the PLU Title IX Coordinator, and are subject to disciplinary action by the university. See [PLU Title IX Policy](#) and [PLU Sexual Misconduct Policy](#).

Sexual or romantic conduct with a patient or the patient's family is serious professional misconduct, will be reported immediately, and is grounds for program dismissal. Such conduct is not limited to sexual contact and includes behaviors or expressions of a sexual or intimately romantic nature. Sexual or romantic conduct is prohibited whether or not the client, family member or significant other initiates or consents to the conduct.

General Academic Policies

These policies apply to all PLU School of Nursing students. Please read the [PLU Student Code of Conduct](#), which all nursing students are expected to follow.

Prerequisite and Co-requisite Courses

The student is responsible for complying with School of Nursing pre-and co-requisite policies. If a student begins a nursing course but has not yet met the prerequisite conditions or terms expected for the course, he or she will be dis-enrolled from that course. Students should refer to the [PLU Catalog](#), their individual academic program contracts, and academic advisor for more information.

Textbooks & Course Resources

Textbooks and other required course materials are a major resource for your professional development. Students will be responsible for materials and content assigned, even if it is not directly covered in class. Textbooks purchased for nursing courses may be required in subsequent courses or be needed as reference materials for [NCLEX](#) preparation; students are strongly discouraged from renting textbooks or purchasing short-term access to eBooks / resources for this reason. Nursing students are strongly discouraged from selling their textbooks.

ATI Assessment

PLU's School of Nursing evaluation processes require the use of independent, external measures of student performance. This enables student performance to be compared to that of students in other nursing programs across the country.

Nursing education is academically rigorous, culminating in a comprehensive national licensure exam. While it is our goal that every student admitted to the PLU School of Nursing will be successful in achieving RN licensure, it is necessary and prudent to implement measures shown to foster first-time NCLEX-RN success. To assist students and faculty in assuring success, the School of Nursing employs both internal and external assessments of students' progress.

The external testing package currently in use for all BSN and entry-level students in the School of Nursing is a nationally standardized exam from Assessment Technologies Institute (ATI). The ATI testing package includes multiple resources for students and faculty, including secure, proctored exams in major areas of study, online review modules, and un-proctored practice tests. The cost of ATI testing and resources is included in student lab fees.

The testing resources available from ATI are used as external assessments, providing students an opportunity to practice with NCLEX-style questions and identify areas in which additional academic work is needed. Faculty use the results of the ATI tests to evaluate student progression and curriculum effectiveness. In some courses the test is required as part of the class grade.

Test scores are available to students via the ATI website. Faculty advisors are available to review ATI results with all students. If a student performs below expectations on external testing, the student is responsible for seeking remediation (with faculty guidance), which may take the form of self-study, re-testing, use of PLU resources, a class, or other opportunities.

Students set up an ATI account, check test results, and take un-proctored exams at <http://www.atitesting.com>. Contact ATI with questions about system problems at 1-800-667-7531.

Portfolios

Portfolios are increasingly used to document professional development and currency after graduation and provide a measure of student achievement of expected program outcomes.

Online portfolios document achievement of the program objectives. By creating the portfolio, students develop self-assessment skills as they reflect on work they have completed and how the work represents what they have learned. The portfolio is a synthesis of knowledge gained and clinical experiences.

Students begin building their portfolios during the first semester of graduate course work and add to them throughout the nursing program. Students are expected to meet with their advisors to review and discuss the progress of their portfolios, which are completed during the final semester of the program.

After graduation from PLU, the portfolio may be used as a resource during job interviews and for applications to graduate school.

Exams

All nursing examinations must be taken at the designated time and place. Students must notify the instructor prior to the exam if an emergency occurs which prevents them from taking the exam. In addition, the student is responsible to follow up by contacting the instructor (within 24 hours of the missed exam) to ensure arrangements for a make-up exam. The time of the make-up exam, if permitted, will be at the discretion of the instructor.

Students enrolled in non-nursing courses with final examinations that conflict with their nursing examinations may seek permission to take the nursing examination during the designated make-up examination date and time. However, the student may be required to validate the conflict with supporting evidence.

Anyone discovered to be in any way dishonest during an exam will be held to the policies and procedures surrounding academic integrity. Please refer to [Violations of Academic Integrity](#) in the School of Nursing Handbook as well as the [university's academic dishonesty policy](#).

Essential Qualifications

The Essential Qualifications for Participation in School of Nursing Degree Programs (below) constitute important elements of academic performance criteria in the PLU School of Nursing degree programs. As such, the Essential Qualifications become part of the criteria by which students are evaluated for satisfactory performance and program progressions. The Essential Qualifications reflect a sample of the performance abilities and characteristics that are necessary to successfully complete the requirements of all nursing programs at PLU. All new and current PLU School of Nursing students are expected to embody these skills. Nursing students must

attest to and demonstrate essential motor, sensory/observation, communication, cognitive, and behavioral/emotional skills needed to be successful in the nursing profession.

The Essential Qualifications for Participation in School of Nursing Degree Programs are used to assist the student in determining whether or not s/he meets essential qualifications, or if accommodations or modifications might be necessary for successful completion of the program at the School of Nursing.

The School of Nursing at PLU is approved by the [Washington State Nursing Care Quality Assurance Commission](#). Only graduates of approved programs are eligible to apply for the NCLEX-RN licensing examination. Mental, physical or emotional impairment may result in the commission suspending a license or denying initial licensure. The Washington State Nursing Care Quality Assurance Commission would expect, and the law requires, nursing programs to evaluate student performance and not pass them if they are unsafe or otherwise not demonstrating satisfactory performance for any reason. Refer to [WAC 246 840 710 \(5\)\(b\)](#).

A student's inability to fulfill program requirements, due in part or in whole to her/his ability to meet the Essential Qualifications, may affect the student's grade in a nursing course or courses, program progression, continued program enrollment, and/or program completion/graduation. Such consequences do not imply discrimination and/or harassment on the part of the faculty member assigning such grades; rather, they are the result of the faculty member's application of professional judgment regarding satisfactory performance for professional nursing practice across the spectrum of essential qualifications. Inability to meet classroom and clinical performance expectations, with or without accommodations, will result in progressions consequences.

Students are required to sign a statement of understanding, acknowledgement, and compliance each semester of the nursing program ([Appendix B](#)). For further information, contact the School of Nursing at PLU and the Washington State Nursing Care Quality Assurance Commission, P. O. Box 47864, Olympia, Washington 98504-7864.

Essential Qualifications for Participation in School of Nursing Degree Programs

The Bachelors of Science in Nursing, Masters of Science in Nursing and the Doctor of Nursing Practice signify that the holder of the degree from Pacific Lutheran University (PLU) is prepared to practice as a Registered Nurse and/or Advanced Registered Nurse Practitioner in the State of Washington. For further health information regarding licensing for the State of Washington, potential students are encouraged to look at the [Washington Department of Health](#) documents.

Nurses must be educated to assimilate clinical, classroom, and laboratory knowledge, acquire skills, critically think and develop judgement through patient care experiences in preparation for semi-autonomous and independent practice, based on the level of nursing preparation. This is often done in collaboration with the patient and among other health care providers including physicians, nurses, and other health professionals. Therefore, intra- and inter-professional communication that is respectful, collegial, civil, and responsible is a requirement of every student enrolled in the program.

Motor Skills

A student should possess motor function sufficient to provide general care and treatment to patients across a variety of health care settings. The student should be able to move safely within work spaces and treatment areas. For safety, students must be able to assist with moving patients in a safe manner and must be able to perform emergency procedures such as basic life support (including Cardiopulmonary Resuscitation) and/or function in other emergency situations.

Sensory/Observation

A student must be able to use and interpret information presented through demonstrations and experiences in nursing. He or she must be able to observe a patient accurately, at a distance and in close proximity, and observe and appreciate non-verbal communications when performing nursing assessment and intervention or administering medications. The student must be capable of perceiving the signs of disease and infection as manifested through physical examination. Such information is derived from images of the body surfaces, palpable changes in various organs and tissues, and auditory information (patient voice, heart tones, bowel and lung sounds). The student must be able to modify decisions and actions when dictated by new relevant data or after analysis of existing data. The student should be capable of recognizing and responding appropriately to life-threatening emergencies.

Communication

The student must communicate effectively verbally, non-verbally, and in writing in a timely manner with other students, faculty, staff, patients, family, and other healthcare professionals. He or she must be able to express ideas clearly and must be open to giving and receiving feedback. The student must be able to convey and exchange information regarding assessments, solutions, directions, and treatments. The student must be able to communicate relevant data to clinical faculty and other healthcare professionals in a timely manner. The student must be able to ask for assistance and supervision when needed. Students are expected to be professional, responsible, sensitive, accountable, and ethical in all interactions that require communication among peer and other professionals on the healthcare team.

Cognitive

A student must be able to accurately elicit, measure, calculate, analyze, integrate, evaluate, and synthesize information collected throughout clinical, lab, and/or classroom settings across all levels of nursing study to adequately and effectively evaluate a patient's condition. This includes being able to modify decisions and actions when dictated by new relevant data or after analysis of new or existing data. The student is expected to use information gained in courses based in the liberal arts, basic and applied sciences in the development of the plan of care which includes being able to relate pathophysiological and psychological basis of disease to client's status. Students must be able to problem solve and think critically in order to develop appropriate treatment plans. Students must be aware of their abilities and contextual scope of practice depending upon setting and level within the program.

The student must be able to quickly read, comprehend, and apply extensive data obtained from written, digital and/or other materials in computer-information systems to the care of patients. The student must be able to acquire and apply information from demonstrations and experiences in the clinical setting, through prepared case studies, and/or through laboratory

work. This information may be conveyed through online coursework, lecture, group seminar, small group activities and/or physical demonstrations.

Behavioral/Emotional

A student must possess the emotional health required for the full utilization of his or her intellectual abilities, the exercise of good judgment, the prompt completion of all responsibilities attendant to the diagnosis and care of patients and families. In addition, the student must be able to maintain mature, sensitive, tolerant, professional, and effective relationships with patients, students, faculty, staff and other professionals under all circumstances. The student must have the emotional stability to function effectively under stress and to adapt to an environment that may change rapidly without warning and/or in unpredictable ways. The student must be able to experience empathy for the situations and circumstances of others and effectively communicate that empathy. The student must know that his or her values, attitudes, beliefs, emotions, and experiences affect his or her perceptions and relationships with others. The student must be able and willing to examine, evaluate, and change his or her behavior when it interferes with productive individual or team relationships. The student must possess skills and experience necessary for effective and harmonious relationships in diverse academic and working environments.

Reasonable Accommodations for Disabilities

It is our experience that a number of individuals with disabilities (as defined by Section 504 of the Rehabilitation Act and the Americans with Disabilities Act) are qualified to study in the School of Nursing with the use of reasonable accommodations. To be qualified to attend the School of Nursing at PLU, all individuals must be able to meet all academic standards including the Essential Qualifications, with or without reasonable accommodations. The School of Nursing will work with the student and the Disability Support Services office to provide reasonable and appropriate accommodations. It is the student's responsibility to contact Disability Support Services. While the School of Nursing will make every effort to work with our students with disabilities to accommodate their disability-related needs, it is important to note we are not required to provide requested accommodations that would fundamentally alter the essential functions or technical standards of the program. Additionally, we cannot guarantee that specific accommodations will be accepted within our partnering clinical settings and organizations. Further information on nursing students with disabilities can be found at the National Organization of Nurses with Disabilities: <http://www.nond.org/>

For further information regarding services available to students with disabilities and/or to request accommodations please contact [Disability Support Services](#) at:

Disability Support Services

Anderson University Center, #300

Tacoma, WA 98447-0003

Phone: 253-535-7206

Fax: 253-536-5124

Web site: www.plu.edu/dss

Email: dss@plu.edu

Disability Services for PLU Students

A number of individuals with disabilities (as defined by Section 504 of the Rehabilitation Act and the Americans with Disabilities Act) are qualified to study in the School of Nursing with the use of reasonable accommodations. To be qualified to attend the School of Nursing at PLU, all individuals must be able to meet both our academic standards and the Essential Qualifications, with or without reasonable accommodations. The School of Nursing will work with the student and the [Disability Support Services \(DSS\)](#) office to provide reasonable and appropriate accommodations on a case-by-case basis and will be provided at no cost to the student.

It is the student's responsibility to contact Disability Support Services. While the School of Nursing will make every effort to work with our students with disabilities to accommodate their disability-related needs, it is important to note we are not required to provide requested accommodations that would fundamentally alter the essential functions or technical standards of the program. Additionally, our partnering clinical settings and organizations reserve the right to make independent decisions as to whether specific accommodations will be accepted within the clinical practice setting. Further information on nursing students with disabilities can be found at the [National Organization of Nurses with Disabilities](#).

Pregnancy

While pregnancy is not considered a disability, it may impact a student's educational progression. The school of nursing recognizes that pregnancy is protected under Title IX. Students may voluntarily request accommodations related to pregnancy and childbirth. Students will not be penalized for absences related to pregnancy and childbirth as long as the student's medical provider deems the absences medically necessary. However, students must meet applicable academic standards to complete the program, so any such absences, missed content, assignments, exams, or clinical experiences need to be made up as they would for any other approved absence. Medical provider clearance may be required in order to return to the patient care setting, and extended absences may affect program progression.

NCLEX-RN Testing Accommodations

Students who have testing accommodations while a student at PLU may qualify for testing accommodations during the NCLEX-RN examination. To request testing accommodations the student will need to submit the following documentation to the Washington State Nursing Care Quality Assurance Commission:

- A letter with her/his application and request for accommodation;
- A letter from the student's health care provider providing a diagnosis and identify the accommodation needed;
- A letter from the nursing program certifying the student has obtained this accommodation while attending PLU.

If accommodations are requested, do not schedule an appointment to take the NCLEX-RN exam until you have received written confirmation of your accommodations and your ATT email indicating "Accommodations Granted."

Candidates approved for testing with accommodations must schedule their testing appointment through the NCLEX Accommodations Coordinator by calling Pearson VUE NCLEX Candidate

Services at the telephone number listed on their ATT and asking for the NCLEX Accommodations Coordinator. Candidates who seek to test with accommodation cannot schedule their appointments through the NCLEX Candidate website. Candidates with accommodations cannot cancel their accommodations at the time of their appointment.

Letters of Recommendation & References

Students are often requested to obtain letters of recommendation or references from faculty and/or staff members of the School of Nursing for scholarships, educational applications, employment, etc. Nursing students first should obtain consent from each faculty/staff member; faculty and staff may choose to decline the request at their discretion.

FERPA Release for Letter of Recommendation & References

Under the Family Educational Rights and Privacy Act ([FERPA](#)), and following [PLU's FERPA Policy Statement](#), all students must sign a release for faculty/staff to disclose any educational information other than direct observation in a letter of recommendation or reference request. The [FERPA Reference-Recommendation Release](#) from the School of Nursing should be completed and filed with the School of Nursing office when the Letter of Recommendation Request form is submitted. Faculty or staff may also ask to see a copy of this release.

Professional Misconduct and Safety Issues

There are many forms professional misconduct that may affect your status as a student or affect your nursing license. Breaches in professional conduct may include, but are not limited to: academic dishonesty, disruptive behaviors, animal cruelty, sexual misconduct, drug, marijuana, or alcohol misuse, professional misconduct, or criminal conduct (such as shoplifting, DUI, fraud, trespassing, forgery, and burglary, without limitation). Nursing Care Quality Assurance Commission's [Decision Making Criteria for License Application](#) has a complete list of convictions that may affect licensure. Students are subject to disciplinary action, up to and including dismissal from the nursing program, for professional misconduct:

1. The School of Nursing may remove a student immediately from a classroom or clinical situation if faculty believes the student is posing harm or significant risk of harm to a patient, client or others.
2. The incident or concern will be reported to the Dean or their designee to begin the process of reviewing the incident in order to determine appropriate action and an incident report will be filed.
3. If appropriate and when required by university policy, the misconduct or safety issue will be referred to the PLU Conduct Officer, Campus Safety, and/or the School of Nursing RAP committee.
4. The student may not be allowed to attend the courses or clinical during the investigational period.
5. If the misconduct or safety issue is a potential violation of the PLU Code of Student Conduct, the matter will be referred to the PLU Office of Student Rights and Responsibilities and/or Campus Safety. PLU's Conduct Procedures will be followed. The School of Nursing (through its RAP Committee and process) reserves the right to determine and apply additional conduct standards and sanctions for nursing professionals
6. If the misconduct or safety issue is a potential violation of School of Nursing policy or professional standards and not a potential violation of the Student Code of Conduct, the matter will be referred to the RAP committee, the student has the right to petition the committee, present their case to the committee, and may present witnesses to the event.

Removal from the classroom or clinical setting for safety reasons may result in failure of the course and clinical. Nursing students who demonstrate a pattern of unsafe practice or who violate standards of academic performance or professional conduct are subject to dismissal from the School of Nursing. Concerns related to student competency or professional conduct will be referred to the School of Nursing RAP committee and/or the Dean or designee for review. Problems involving possible violation of PLU's policies as stated in the PLU Student Code of Conduct are reported to the Office of the Vice President of Student Life.

Violations of Academic Integrity

Academic integrity is honesty concerning all aspects of academic performance including clinical performance. Academic integrity in the classroom is defined in the [PLU Student Rights and Responsibilities](#). Academic dishonesty in the clinical setting include, but are not limited to:

- Plagiarizing clinical assignments, including care plans, drug reviews, falsifying data in a patient's record, or other required work,
- Submitting work written by others as one's own work,
- Unauthorized collaboration with others in fulfillment of assignments,
- Falsifying data or deliberately submitting inaccurate information; and
- Covering up or denying knowledge of an error in the clinical setting.

When an instructor believes a student has violated the university's academic integrity policy, s/he will contact the student to inform him or her of the issue and will follow the PLU policy for resolving an academic dishonesty incident.

1. The instructor may meet informally with the student to resolve the matter.
2. The instructor may ask to meet with the student in the presence of witnesses to resolve the matter. In this case, the student will be informed in writing of the purpose of the meeting, and of his or her right to have a witness present.

When an instructor is unable to meet with a student, as at the end of Spring Term or a term before a student studies abroad, the instructor will document the allegation and send it to the student, via certified mail or email, together with a letter stating the penalty to be imposed.

3. The instructor may submit an [Academic Dishonesty Report Form](#) (ADRF) and supporting documentation to the chair of the Campus Life Committee (CLC).
4. The instructor may request a formal hearing administered by an Academic Dishonesty Hearing Panel (ADHP) by notifying the chair of the CLC on the ADRF. The Associate Director for Student Rights and Responsibilities will then notify the student of the charge of misconduct and initiate a hearing as outlined below in "Formal Hearing Process." The Associate Director for Student Rights and Responsibilities will also initiate a search of any prior academic misconduct records for that student. When a hearing is requested by the instructor or is required, the student and instructor will be notified at least 48-business hours in advance.

The instructor has the authority to impose penalties with respect to his or her class. The minimum penalty grade for dishonesty in coursework that constitutes 30% or more of a course grade shall be an "E" for the course, unless the student is enrolled "pass/fail" in the class, and then the course grade will be an "F". Dishonesty in other required course work shall result in a minimum penalty grade of zero for that work.

The violation and the sanction will be documented in writing. The student will be given a copy of the description of the violation and the sanction, and copies should be forwarded to the Dean of the School of Nursing, School of Nursing RAP Committee and when appropriate, to the university's Academic Dishonesty Hearing Panel (ADHP).

Students who disagree with a penalty imposed by the faculty or the filing of an ADRF may request a formal hearing by an ADHP. Such a request must occur within five business days of notification of the grade in question or the notification of suspected academic dishonesty. The process for disputing the penalty or filing an ADRF is outlined in the [Academic Integrity](#) section of the PLU Students Rights and Responsibilities.

All issues of Academic Integrity will be reviewed by the School of Nursing RAP Committee to determine if the breach is severe enough to warrant a recommendation of further sanctions, including dismissal from the program.

Disruptive Behaviors

The faculty and staff of the PLU School of Nursing function in a spirit of mutual respect in dealing with others in the university community. It is thus incumbent upon all members of the SoN to contribute to a culture of respect everywhere on campus, at all times, and in all SoN activities, through our decisions, actions, and speech.

The School of Nursing may remove a student from the clinical setting, classroom, or lab if they exhibit disruptive behavior. Disruptive behaviors such as incivility, lateral violence, horizontal violence, relational aggression, or bullying are not acceptable in the nursing profession. Civility is the reflection of professional empathy and understanding and demonstrates accountability and respect. Incivility includes: openly challenging faculty and classmates, lack of classroom etiquette, gossiping, texting, talking or misusing electronic devices during class or clinical, and making rude gestures (Holm, 2014). From the American Nurses Association, “Lateral violence refers to acts that occur between colleagues, where bullying is described as acts perpetrated by one in a higher level of authority and occur over time. The acts can be covert or overt acts of verbal or non-verbal aggression. Relational aggression is a type of bullying typified by psychological abuse. Behaviors include gossiping, withholding information and ostracism. Behaviors can extend outside the workplace and can occur in person or in cyberspace” (Dellasega, 2009). Respecting classmates, faculty and health care provider peers is essential for coordination of safe patient care. Disruptive, uncivil, and bullying behaviors are not tolerated in the School of Nursing and may be grounds for disciplinary action or dismissal from the program.

Sexual Misconduct and Non-consenting Relationships

Sexual misconduct as identified in the [PLU Student Code of Conduct](#) and by the [Washington State Nursing Care Quality Assurance Commission](#), (see WAC 246-840-740) and [Department of Health](#) will be used to determine sexual misconduct.

Non-consenting sexual relationships, intimate contact, or sexual harassment of any kind between students, between students and faculty, or between students and patients or clinical staff members, are regarded as sexual misconduct. All suspected inappropriate relationships will be reported to the PLU Title IX Coordinator, and are subject to disciplinary action by the university. [PLU Title IX Policy](#) and [PLU Sexual Misconduct Policy](#).

Sexual or romantic conduct with a patient or the patient’s family is serious professional misconduct, will be reported immediately, and is grounds for program dismissal. Such conduct is not limited to sexual contact and includes behaviors or expressions of a sexual or intimately romantic nature. Sexual or romantic conduct is prohibited whether or not the client, family member or significant other initiates or consents to the conduct.

Drug, Marijuana or Alcohol Misuse

Nursing requires mental, physical and emotional competencies and coherence to practice safely. The use of drugs, marijuana, or alcohol impairs coherence, decision making, and the ability to practice.

Impairment by drugs or alcohol is a violation of [WAC 246-840-710\(5\)\(b\)](#), which states “Practicing nursing while affected by alcohol or drugs, or by a mental, physical or emotional condition to the extent that there is an undue risk that he or she, as a nurse, would cause harm to him or herself or other persons.” Impairments of a nurse or student to practice safely may result in the commission suspending a license or denying initial licensure. Practicing under the influence of drugs, marijuana or alcohol is considered a breach of professional conduct by the Washington State Nursing Care Quality Assurance Commission.

Students whose behaviors suggest use of alcohol, marijuana, drugs or medications (including those taken with valid prescriptions for legitimate medical purposes) which impair or limit the ability to practice nursing safely are subject to removal from the clinical area and possible dismissal from the School of Nursing. These issues are referred to the Recruitment, Admission and Progression (RAP) Committee. For further information, refer to the [university policy](#) on alcohol/drug misuse: [Alcohol Sanctions](#) or [Drug Sanctions](#). Additional sanctions may be imposed by the School of Nursing given patient safety considerations.

In addition to PLU policies on drug, marijuana, or alcohol misuse students must also adhere to the rules and regulations of the individual clinical agencies they visit. Clinical agencies reserve the right to do mandatory scheduled or random drug screening at your expense. If the drug screening has a positive result and the clinical agency refuses to allow the student to participate in clinical at their agency, the School of Nursing is not obligated to find the student a new clinical site for the rotation.

Dismissal from the School of Nursing for Reasons of Conduct

Students may be dismissed from the School of Nursing for reasons of conduct that may not be outlined in, or a violation of the PLU Student Code of Conduct. Incidents requiring report to other offices or university officials will be managed according to PLU policy. Criminal violations will be reported to appropriate law enforcement. Dismissal from the School of Nursing for reasons of conduct is an action that can be taken only by the Dean. Students dismissed from the program due to conduct concerns may appeal the decision to the [University Dispute Resolution Committee](#). The UDRC review is limited to whether a School of Nursing or University policy, including the policy on Equal Opportunity, was violated.

Academic Advising

General Advising Information

All students will be assigned a nursing faculty advisor during their first semester in the School of Nursing. The faculty advisor may advise them academically and professionally and serve as the student's advocate. The faculty advisor's role is not to be a personal friend or therapist. Students should plan to meet with their advisors to check their progress and discuss any issues or concerns. Student and advisor review the individual's academic record, progress on portfolio, and graduation requirements.

Change of Advisor

The School of Nursing reserves the right to reassign students to a new faculty advisor when need arises. Such changes most often occur when faculty leave the department, when new faculty are hired, and/or when a faculty member's availability and/or status changes.

Students are also allowed to request a change of advisor. A change of advisor form is available from the Advisor, Admission & Student Support Coordinator. Keep in mind that change of advisor requests are not granted unconditionally. Students benefit greatly from working with the same advisor for their three years in the School of Nursing. Doing so ensures that one faculty member is familiar with the student's individual goals and academic progress while also facilitating consistency in advising. Students desiring a change of advisor must contact the Advisor, Admission & Student Services Coordinator to discuss why they would like this change. All changes of advisor must be approved by the Associate Dean for Graduate Studies, who may decline the request if, in their discretion, the change would not be beneficial to the student. A student wishing to work with a specific advisor should contact this faculty member first to see if he or she is accepting additional advisees.

Academic Performance

Attendance

Nursing students are expected to attend all classes, to be in the clinical areas as assigned, and to be on time. Faculty will set other attendance requirements for particular classes, labs and/or clinicals. It is the faculty's discretion to determine what constitutes excused and unexcused absences. Failure to attend the first two classes or a clinical orientation will result in removing the student from the course and affects program progressions accordingly.

A minimum number of clinical hours is required to complete clinical rotations. Absences for any reason, excused or not, may adversely affect the course grade. Unexplained/unexcused absences may result in failure and will definitely affect the student's grade.

The laboratory component of nursing courses is an integral part of the nursing program. Successful demonstration of technical nursing skills in the lab is vital to ensure safe nursing practice in the clinical agencies. Therefore, attendance at all scheduled lab demonstrations, practices and tests are mandatory.

If an absence is unavoidable, the student is responsible for remedial work to master the material or activity missed, as well as for notifying the instructor(s) in a timely, appropriate manner. If a scheduled test is missed, there is no guarantee that it can be rescheduled; this may adversely affect the final course grade.

Grading Scale

The following grading scale has been adopted by the School of Nursing faculty and is used in all courses required for the nursing degree programs:

4.00	94-100	A	3.00	84-86	B	2.00	71-75	C	1.00	62 - 64	D
3.67	90- 93	A-	2.67	80-83	B-	1.67	68-70	C-	0.67	59 - 61	D-
3.33	87-89	B+	2.33	76-79	C+	1.33	65-67	D+	0.00	58 & below	E

Academic Progression

Progression in the nursing major is dependent upon satisfactory completion of the prescribed sequence of courses. Nursing students must obtain a minimum grade of "C" (2.0 on a 4.0 scale) in all required prerequisite and nursing courses before students may progress to the next sequence of nursing courses. Students who earn less than a "C" (2.0 on a 4.0 scale) in any nursing course must repeat that course in its entirety in order to continue in the program. Required courses may be repeated only once. The option to repeat a nursing course is not guaranteed. See [Course Failure](#) and [Petition Process](#) sections for more information. Students who earn a "C-" or below in a repeated nursing course are not permitted to enroll in the course a third time; they are dismissed from the nursing program.

Graduate students must maintain a grade point average of 3.0 in all graduate work. Graduate-level credit will not be given for any class in which the grade earned is lower than a C (2.0). A graduate student whose grade point average falls below 3.0 is placed on academic probation and

is subject to dismissal from the program. A graduate student cannot earn a master's or DNP degree with less than a 3.0 cumulative grade point average in all graduate-level work.

Earning less than a C (2.0 on a 4.0 scale), is defined as failing a course in the nursing program. Withdrawal from a course in failing status is considered equivalent to a course failure. Failure or withdrawal in failing status from any two nursing courses will result in dismissal from the School of Nursing.

If a student encounters circumstances beyond his or her control, that student is responsible for addressing this as soon as possible with faculty instructors and with the academic advisor. The Recruitment, Admission and Progression Committee (RAP) and/or the Dean may require documentation and testimony of these circumstances.

Notice of Deficiency

The School of Nursing faculty may enact a Notice of Deficiency for students who are not meeting the Essential Qualifications or not performing to academic, clinical, lab, or professional standards at any point in the academic term and program of study ([Appendix A](#)). The Notice of Deficiency will specify the nature of the performance concern, criteria for satisfactory performance, the timeline for achieving expected improvements, and consequences for failure to improve. The notice will be signed by the issuing faculty member and the student. The original signed form is placed in the student's School of Nursing academic file. Communication regarding the notice will be submitted by the issuing faculty member to the following School of Nursing personnel: Academic Advisor; Chair of RAP committee; Advising, Admission, and Student Support Coordinator; Associate Dean for Graduate Programs (for graduate students); School of Nursing Dean; and as appropriate, Lead Course Faculty and/or the SoN Clinical Placement Coordinator.

Deficiencies are categorized as minor and/or major based on the severity of the event. Major violations will result in immediate notification to the School of Nursing Dean. Three separate minor and/or a single major occurrences during the program of study will result in a review by the RAP committee and/or the Dean of Nursing and may result in dismissal from the School of Nursing. Any occurrences that place the client, self, or others in potential immediate danger will result in immediate review by the Dean.

Incomplete Grades

Incomplete grades provide a mechanism for students who are in good standing but have significant unforeseen circumstances preventing course completion in the normal time-frame. Incomplete grades affect nursing program progression and thus are permitted only in exceptional circumstances. If a student wishes to request an incomplete grade, they must first obtain permission from RAP before they are allowed to negotiate with the faculty of record. This will require the student to work with their advisor to petition RAP and complete the student's portion of the Incomplete Contract Form from the Registrar's office. The petition to RAP should include the reason for the request for an incomplete grade as well as a plan that would allow the student to complete the grade. The decision by the RAP committee will be whether or not the student may negotiate with the faculty of record for an incomplete grade and not to approve the contract between the student and the faculty of record. The faculty of record has the right to refuse an

incomplete grade request regardless of the RAP decision and will determine the final plan for successful completion of the grade. Incomplete grades must be completed before the beginning of the next semester in which the student will be enrolled in nursing courses. Incomplete grades that are not completed by the agreed upon date on the Incomplete Contract Form by the beginning of the next nursing term will default to the agreed upon grade or E/F.

Probationary Status

Students who earn a "C-" or below in a nursing course, withdraw in failing status (withdrawal in failing status is considered a failure in the School of Nursing), or receives a Notice of Deficiency for a major violation or 3 minor violations are subject to RAP review and may be placed on probation in the School of Nursing. Students may repeat a failed nursing course, or enroll in other subsequent nursing courses, only after a review by the RAP committee.

If, while on academic probation, a student earns a "C-" or below in any nursing course, or withdraws in failing status, that student will be dismissed from the School of Nursing. If, while on professional conduct-related probation, a student receives a Notice of Deficiency for a major violation or receives an additional 3 Notice of Deficiency for minor violations, the student will be dismissed from the School of Nursing.

Each situation is individually evaluated, and permission to continue and/or repeat is not automatically granted. Generally, students will remain on probation for one calendar year from the date of the RAP review.

Graduate students must maintain a grade point average of 3.0 in all graduate work. Graduate-level credit will not be given for any class in which the grade earned is lower than a C (2.0). A graduate student whose grade point average falls below 3.0 is placed on academic probation and is subject to dismissal from the program. A student's academic probation may be lifted once his or her cumulative GPA meets the minimum standard. If, while on academic probation, a student receives a grade of less than C, the student is subject to dismissal from the program. A graduate student cannot earn a master's or DNP degree with less than a 3.0 cumulative grade point average in all graduate-level work.

Repeating a Course

Students who need to repeat a nursing course must first petition to do so. See [Course Failure](#) and [Petition Process](#) sections for more information. The student will register for that course on a space-available basis. If all sections of the course are closed, students must register for the course during a later semester. If progression is delayed for more than one (1) semester, the student may be required to demonstrate clinical competencies prior to being allowed to continue in clinical courses.

When a student repeats a course, both the new and original grade will appear on their official transcript. However, PLU uses the higher of the two grades to determine the cumulative GPA. For further information regarding PLU's policy on repeating courses, review the PLU handbook ([undergraduate policies & procedures](#) or [graduate policies & procedures](#)).

Dismissal from the School of Nursing for Academic Reasons

Students who earn a "C-" or below in a repeated course are not permitted to enroll in the course a third time; they are dismissed from the nursing program. Dismissal from the School of Nursing is an action that can be taken only by the Dean based on recommendation by the RAP committee. Students dismissed from the program due to unsatisfactory performance may appeal the decision to the [University Dispute Resolution Committee](#). The UDRC review is limited to whether a School of Nursing or University policy, including the policy on Equal Opportunity, was violated. Students who are dismissed from the School of Nursing for academic performance may re-apply to the nursing program.

Course-Level Grade Issues

Courses Outside the School of Nursing

Some courses required for completion of the nursing major are offered in academic departments other than the School of Nursing. These courses are administered by the respective departments with regard to scheduling, evaluation, grading, etc. Grades earned in such courses cannot be disputed through the School of Nursing process outlined here, and must be addressed with the respective academic department as appropriate.

Course Failure

1. The Recruitment, Admission and Progression Committee (RAP) reviews the record of every student receiving a grade of less than 2.0 in a course; this record includes the faculty's evaluation and the student's entire educational record. Course faculty is consulted when appropriate.
2. Students must provide a copy of [permission to remain in the program and retake the failed course](#) petition form describing the issue in detail and any plan for future success to the chair of the Committee prior to the date of the next RAP meeting.
3. Students may ask to appear before the RAP Committee with a faculty advocate, if desired, to present their situation. The student and/or faculty advocate does not remain for the Committee deliberations.
4. After all available documentation has been reviewed, and all parties concerned have had the opportunity to voice concerns, the Committee will make its recommendation to the Dean.
5. Nursing students will receive a written statement from the Dean as to the final decision. Letters sent to students placed on academic probation will have identified areas of difficulty and stated specific expectations to be met; the student's probationary status and consequences; and the minimum level of competency to be achieved for successful completion of the course and further progression.
6. Copies of the letter will be sent to the student, appropriate faculty, and the student's faculty advisor, and added to the student's educational record in the School of Nursing. Copies may also be sent to the appropriate university officials.
7. Upon receipt of notification of successful completion of the courses for which the student was originally placed on probation, the RAP Committee will notify the student that the terms of the probation have been met and that he or she is again in good standing in the School of Nursing.

Grade Dispute Policy

The PLU School of Nursing is dedicated to fair and accurate appraisal of each student's coursework. When disagreements arise over grades assigned in a course, students and faculty should first follow the School's established procedure for informal grade dispute resolution. If the informal procedure is unsuccessful in resolving the grade dispute, students and faculty will undertake the School's formal grade dispute resolution procedure*.

Procedural Steps:

1. A student considering a grade dispute must first read this document in its entirety and discuss it with their assigned faculty advisor before proceeding to step 2. If the student's advisor is also the faculty member responsible for submitting the disputed grade, the student should contact the School of Nursing Advisor, Admission & Placement Coordinator to determine an alternative advisor for these proceedings.
2. A student who chooses to dispute a grade should first initiate the **informal grade dispute process** by addressing the matter with the faculty member responsible for submitting the grade in the following manner:
 - a. Submit to the responsible faculty member a written statement, detailing why the grade is being disputed and the grade and/or remedy the student is seeking, and requesting an appointment time to meet with the faculty member.
 - i. The student is responsible for providing a copy of the written statement to the School of Nursing office to be placed in the student's official School of Nursing file.
 - ii. The written statement should be available during the discussion between the student and the responsible faculty member.
 - b. After the initial discussion, the responsible faculty member should provide a written statement detailing the issues discussed, including why or why not the grade will be changed.
 - i. Both the responsible faculty member and the student should sign this written statement; the student should have an opportunity to provide additional written comments.
 - ii. The faculty member is responsible for submitting this statement, along with any additional written comments from the student, to the School of Nursing office to be placed in the student's official School of Nursing file.
3. If the matter is not resolved between the student and the responsible faculty member, the student may request assistance and advocacy from his or her faculty advisor. With regard to written statements, requests for meetings and discussions held between the responsible faculty member, the faculty advisor, and the student, should follow the same procedures and guidelines as outlined in Step #2.
4. If the matter is not resolved after discussion with the faculty member and the faculty advisor, the student may initiate the **formal grade dispute process** by appealing to the Recruitment, Admission, and Progression (RAP) Committee. The RAP committee will make a recommendation to the Dean, who will make the final determination. If the Dean is the faculty member responsible for submitting the disputed grade and/or is the student's advisor, the student may appeal to the provost. With regard to written statements, requests for an appeal, and discussions held between the responsible faculty member, the faculty advisor, the student and the Dean or provost, should follow the same procedures and guidelines as outlined in Step #2.
5. If the student chooses to pursue the matter beyond Step #4, he or she may submit a grievance to the [University Dispute Resolution Committee](#) (UDRC). It is expected that the procedure outlined here will be followed in its entirety before a grievance is made to the UDRC. All copies of written statements from the student's official School of Nursing file regarding the grade dispute will be made available to the UDRC upon request.

□ *Some courses required for completion of the nursing major are offered in academic departments other than the School of Nursing. These courses are administered by the respective departments with regard to scheduling, evaluation, grading, etc. Grades earned in such courses cannot be disputed through the School of Nursing process outlined here, and must be addressed with the respective academic department as appropriate.* □

Informal Grade Dispute Guidelines

1. Before a student initiates the formal grade dispute process, s/he must complete the informal grade dispute process.
2. A student who disputes a grade should discuss the reason for the grade with the faculty member who assigned the grade prior to initiating any formalized grade appeal.
3. No student should discuss any grade-related complaint with the Dean or with any other faculty member or committee, except his or her advisor, until the informal grade dispute process has concluded (the completion of step 2b under “Procedural Steps”). If necessary, the student may request the assistance of his or her advisor. If the student’s advisor is the faculty member responsible for submitting the grade, the student should contact the School of Nursing Advisor, Admission & Placement Coordinator to request that an alternative advisor be assigned to act as his or her advocate.
4. The difference between the disputed grades must be one full letter grade or higher, with the exception of those grades that could result in dismissal from, or delay in, the nursing program. (Examples: A- vs. A, *No dispute*; B vs. A, *Can be disputed*; C- vs. C, *Can be disputed*.)
5. Grounds for grade disputes should arise from documented incidents of discrimination and/or harassment based on race, religion, age, color, creed, national or ethnic origin, gender, sexual orientation, marital status or disability**, and/or arising from non-compliance with established PLU and/or School of Nursing policies and procedures.
6. The grade must be disputed within seven (7) working days after the grade has been officially posted, and prior to beginning the first day of any courses for which the disputed course/grade is prerequisite.
7. A student who has completed informal efforts at resolution, has a disagreement amounting to at least one full letter grade, and wishes to invoke the formal grade dispute procedure should understand that in the course of pursuing the dispute, his or her coursework may, with the faculty member’s consent, be referred to qualified external graders, most likely the faculty member’s school colleagues who teach in the same area.
The student should understand that external referral may lead to a recommendation for lowering the grade as well as to a recommendation for raising the grade or to no change at all.
8. If the dispute is not resolved at the informal level, the student may appeal to the Recruitment, Admission, and Progression (RAP) Committee.

Formal Grade Dispute Guidelines

1. A formal grade complaint must be submitted to the School’s RAP committee within the first 10 *working* days after a grade has been officially posted.
2. The RAP committee will consider only those grade disputes arising from documented incidents of discrimination or harassment, or non-compliance as detailed in step #5 of the informal grade dispute procedure.

3. The RAP committee may request a meeting with the student, the responsible faculty member, and/or the student's faculty advisor.
4. The RAP committee will provide the Dean with a written statement summarizing the committee's findings. The Dean may then pass this statement on to the student, the responsible faculty member, and the student's faculty advisor. The Dean may provide the responsible faculty member with a recommendation that supports the original grade, or supports the submission of a grade either higher or lower than the original grade, or supports the implementation of some other remedy, (e.g., additional examinations or assignments). Authority to change a student's grade will remain with the faculty member responsible for submitting the grade, except in cases of discrimination or harassment as detailed in step #5 of the informal grade dispute procedure.
5. If the Dean is the faculty member responsible for submitting the disputed grade and/or is the student's advisor, the student may appeal to the provost.
6. All written statements become part of the student's educational record and will be included in the student's official School of Nursing file.
7. As a general guideline, response time from receipt of a written request to a reply to that request should be no longer than ten (10) *working* days. However, time constraints necessitated by the university and/or School of Nursing calendar may prevent this from occurring.

*****Documented, proven discrimination and/or harassment based on disability will not be tolerated. However, certain physical and psychological expectations exist for those students enrolled in nursing courses, per the Physical And Psychological Expectations Of Nursing Students Preparing For Professional Nursing Practice. A student's inability to fulfill program requirements, due in part or in whole to physical and/or psychological limitations, may affect the student's grade in a nursing course or courses. Such grades do not necessarily imply discrimination and/or harassment on the part of the faculty member assigning such grades.***

Status and Enrollment

Part-Time Enrollment

Undergraduate and ELMSN students must maintain full-time status in the nursing program. A part-time program plan is not available for BSN or pre-licensure students.

DNP students need to indicate upon admission whether they are requesting full-time or part-time status. Any student seeking to change their status from full-time to part-time enrollment in the Post-Licensure MSN or DNP programs, including those who have been full-time nursing students, must follow the steps as outlined below:

- Prior to taking action (withdrawal from or enrollment in courses), discuss issues regarding part-time status with their assigned nursing advisor;
- After discussion with the advisor, submit, in writing, a request for part-time enrollment to the Associate Dean for Graduate Programs. This written request should be submitted prior to the semester in which the start of part-time status is desired;
- Upon approval by the RAP Committee or the Dean, schedule an appointment with the School of Nursing Advisor, Admission & Placement Coordinator to sign a new part-time status academic program contract;
- Use the new part-time status academic program contract as the contractual guide for subsequent enrollment in the nursing curriculum.

Enrollment management in nursing is very important because of clinical agency expectations, capacity, and demand. A change in any student's enrollment status affects others. Requests to convert to full-time status from part-time status must follow this same process. Students should be aware that returning to full-time status following part-time enrollment is on a space-available basis and cannot be guaranteed.

Leaves from the School of Nursing

All students enrolled in the nursing program are expected to adhere to the curricular sequence as outlined in the university catalog. Moreover, all nursing students are required to sign an individual academic program contract (APC) within the first month of matriculation to the program. The academic program contract outlines the particular program of study leading to the BSN, MSN, or DNP degree; all nursing majors must follow their signed program contracts. Enrolling in courses deviating from the signed academic program contract may result in delay in progression through the nursing curriculum, and ultimately dismissal from the major or delay in graduation.

The nursing program is a specialized program at PLU. The course sequence is both highly structured and rigorous, requiring commitment and intensive focus from students. The structure of clinical placement further differentiates the nursing program from other academic programs. Because clinical placements are limited, competitive, and allocated to nursing programs throughout the region well in advance of the semester, the nursing program is structured according to a cohort model. Under this model, students move through the course sequence with the same group of peers for their entire program. The number of students accepted into a cohort is determined by the number of anticipated clinical placements, and faculty are hired and scheduled accordingly. To leave a cohort and/or attempt to reenter a different cohort is a complicated process that can delay a student's progress indefinitely. Students are expected to

make reasonable effort and arrangements to complete the sequence as planned without interruptions. The school believes that any interruption of the program as structured should be on a preplanned, or when necessary, an emergency basis.

Leave of Absence

A leave of absence from the School of Nursing is an interruption in academic progress of one year or less. A written request for a leave of absence, stating the reasons, length of time, and expected date of return, should be submitted to the RAP Committee. Students may also be required to supply additional supporting documentation. The leave of absence must ultimately be approved by the Dean.

A leave of absence may be granted because of special foreseeable circumstances, such as completion of military obligations, personal or family health and wellbeing, financial difficulties, planned medical procedures, or childbirth that is known to be occurring in an upcoming term. Because these events are foreseeable, students are expected to request a leave of absence before the term begins. Leaves of absence after the semester has begun may be granted when unforeseeable or emergency circumstances arise such as a sudden illness or a family member's illness, complications with a medical procedure like childbirth, an accident, or military mobilization.

Leave may be denied when the student fails to follow the process established for requesting leave, when the request is not timely, when educational standards would be lowered or require substantial modification for the student requesting leave and/or others, or when the reason for leave is deemed insufficient. Denial of requested leave may require the student to withdraw and seek readmission. Students should be aware that there may be an academic and/or financial consequence to withdrawing during a semester.

When the need for a leave of absence is foreseeable, a student should inform the course instructor(s) and his or her faculty advisor at least 30 days prior to the beginning of the semester in which leave will be needed. This should be prior to the required payment of tuition. Failure to make a timely request for foreseeable leave may result in leave being denied. Tuition will not be refunded. When the need for leave is not foreseeable, notice must be given as soon as is practical. An appointment with the Advisor, Admission and Placement Coordinator is advised to discuss the leave and plan for return. Return to the School of Nursing is offered on a space-available basis.

Students considering a leave of absence should first meet with their advisor to determine if they have sufficient cause to justify a leave and how this leave will impact their academic progress. Those requesting a leave after the add/drop period will further be required to speak with The Office of Financial Aid to determine any fees that will accrue as a result of a withdrawal, and how this will impact their funding.

Medical Withdrawal

The university recognizes that in certain circumstances a health issue may so significantly impact a student's academic work that a Medical Withdrawal for the term is needed. Students may petition to withdraw completely from the University for a specific term for medical reasons. The

student must use the [Medical Withdrawal Information Sheet and Checklist](#) to help complete the Medical Withdrawal Petition, provide written evidence from a physician and a personal explanation to the vice president for student life. The petition and the accompanying materials must be completed and submitted before finals week for the specific term and in no case later than the last day of class in the specific term. If granted, the notation of WM in lieu of grades will appear on the student's transcript. Medical provider clearance is required prior to re-enrollment. Contact the [Student Life](#) Office (Hauge Admin. Bldg., Rm 105, 253-535-7191 or slif@plu.edu) for more information and to receive the Petition for Medical Withdrawal. When contacting the Student Life Office, it is best to have the documentation immediately available to expedite the process.

Withdrawal from the Term

Students in the School of Nursing may choose to pursue a withdrawal from the term if they do not have justifiable cause for a leave of absence, or their petition for a leave of absence was denied. To do this, a [notification of withdrawal](#) form must be submitted to the [Student Services Center](#) and the School of Nursing. Oral requests are not acceptable. Charges will remain on the student account until written notice is received. Students are strongly advised to meet with their academic advisor prior to submitting withdrawal paperwork to determine how this will impact their status in the School of Nursing.

Students must understand that a withdrawal from the university is also a withdrawal from the School of Nursing. Readmission is neither guaranteed nor implied.

Absence in Excess of One Year

Absence in excess of one year requires a letter of withdrawal submitted to the Recruitment, Admission and Progression (RAP) Committee prior to leaving. Students withdrawing from the School of Nursing and the university should follow the appropriate procedures for facilitating future return or transfer to another institution. Returning to the PLU School of Nursing will require reapplication to the nursing program. Readmission is neither guaranteed nor implied.

Returning from Leave of Absence

Returning from Leave

Return to the School of Nursing is offered on a space-available basis. If progression is delayed for more than one (1) semester, the student may be required to enroll in a 1 credit skills refresher course NURS 491-IS Nursing Clinical Skills Refresher to update knowledge and skills, as well as to make an appropriate transition into the current curricular structure. Additionally, updated health, certification and clearance documents may need to be submitted.

Returning to Program Following Medical Withdrawal

Students who withdraw from the School of Nursing for medical reasons must submit a verifiable letter from a licensed primary care provider (MD, DO, NP, PA) addressing specific issues related to nursing practice and a personal statement. The request for return and the physician's statement will be reviewed by the RAP Committee for approval. Students who were on a medical leave of absence must also be approved to return to the University by [Student Life](#) and should refer to the [Medical Withdrawal Information Sheet and Checklist](#) for further instructions.

If approved, return to the School of Nursing is offered on a space-available basis. If progression is delayed for more than one (1) semester, the student may be required to enroll in a 1 credit skills refresher course NURS 491-IS Nursing Clinical Skills Refresher to update knowledge and skills, as well as to make an appropriate transition into the current curricular structure. Additionally, updated health, certification and clearance documents may need to be submitted.

Returning from Withdrawal of the Term

If students are passing all nursing coursework with a C (2.0) or better at the time of their withdrawal, they will be allowed to reapply to the School of Nursing and request permission to reenroll in the courses they were taking when they withdrew. If readmission is granted, the student will reenter the nursing program on a space-available basis. However, priority placement will be given to students who have been granted a leave of absence. If progression is delayed for more than one (1) semester, the student may be required to enroll in a 1 credit skills refresher course NURS 491-IS Nursing Clinical Skills Refresher to update knowledge and skills, as well as to make an appropriate transition into the current curricular structure. Additionally, updated health, certification and clearance documents will need to be submitted.

To return to the University after a withdrawal of the term, students need to fill out the [Re-entry Application](#) and write a statement of good character to [Student Services](#).

Returning from Leave in Excess of One Year

Returning to the PLU School of Nursing will require reapplication to the nursing program. Readmission is neither guaranteed nor implied. If students are passing all nursing coursework with a C (2.0) or better at the time of their withdrawal, they will be allowed to reapply to the School of Nursing and request permission to reenroll in the courses they were taking when they withdrew. If readmission is granted, the student will reenter the nursing program on a space-available basis. The student may be required to enroll in a 1 credit skills refresher course NURS 491-IS Nursing Clinical Skills Refresher to update knowledge and skills, as well as to make an appropriate transition into the current curricular structure. Additionally, updated health, certification and clearance documents will need to be submitted.

To return to the University after a leave in excess of one year but less than six years, students need to fill out the [Re-entry Application](#) and write a statement of good character to [Student Services](#). If leave is in excess of six years, students will need to re-apply through the Office of Admissions.

Petitions

The General Petition Process

Many student interactions with the RAP committee require the student to submit a petition to explain the circumstances of their situation. The petition process allows students to request an exception to policy, permission to step out of the nursing curriculum sequence, address professional conduct issues, or to dispute a grade. Regardless of the circumstances, the process of writing a petition is the same. Please also see the Handbook section on [Interplay between PLU's Student Code of Conduct and the School of Nursing](#). Students should work with their advisors to be sure petitions are complete and accurate.

1. Students considering a petition must contact their advisor as soon as possible. Advisors can help them determine the best course of action: what type of petition the student should pursue, how to craft this petition, and the process involved.
2. After meeting with their advisor, students may also request a meeting with the Advisor, Admission, and Placement Coordinator to discuss the petition process further and determine a timeline for completion.
3. The student will draft a statement that outlines their request, their reason for this request, and their proposal for future study and/or course(s) of action. This statement will vary depending upon the student's circumstances and request. Students should consult with their advisor to determine what kinds of information should be included in the statement.
4. Additional documentation, such as primary care provider notes, may also be required.
5. Students may request letters of support from current nursing faculty, but this is not required.
6. Once the petition statement is complete, students must submit it to their advisor for feedback and suggestions.
7. Once the advisor deems the statement suitable, the student may submit the statement, along with any supporting documentation, to the Advisor, Admission, and Placement Coordinator.
8. The petition will be reviewed at the next available Recruitment, Admissions, and Progression (RAP) committee meeting.
9. The student has the option to make a personal presentation at this meeting, and to bring along one academic advisor or designated faculty substitute. Students may also choose to bring witness to the event if applicable. However, personal attendance at the RAP meeting is not required.
10. Based upon their collective evaluation of the petition, the RAP committee will make a recommendation to the Dean regarding the petition. This recommendation will include an approval or denial of the petition, and may contain suggested or required course(s) of action from the student.
11. The Dean will review the petition and the committee's recommendation before making the final determination.
12. Students will be informed by mail of the outcome. At this point, petition decisions are final.
13. Students may contact the [University Dispute Resolution Committee](#) (UDRC) if they feel the processes for the petition did not follow School of Nursing or University policy. The

UDRC review is limited to whether a School of Nursing or University policy, including the policy on Equal Opportunity, was violated.

14. Students who have petitions denied should consult with their advisor to determine how best to proceed with their nursing education.
15. Students who have petitions approved, but fall out of sequence with their cohort, will be placed in a new cohort on a space available basis.

Clinical Practice Policies and Health Requirements/Expectations

Clinical Placements

Progression to clinical placement is a privilege dependent upon successful completion of previous required classroom, lab, and clinical experiences. All clinical placements are coordinated through Clinical Placement Northwest Consortium and independently with non-consortium agencies. At no time is a student to seek out their own preceptor or placement. Failure to abide by this policy may result in loss of clinical placement opportunities. In addition, clinical health requirements and essential qualifications must be met each semester prior to beginning clinical experiences.

The School of Nursing uses a variety of clinical sites. To accommodate all students, the School of Nursing may offer clinical coursework in evenings, nights, weekends, summer or J-term, and students are required to enroll when clinical course is made available to their cohort. At times, due to agency, preceptor and/or School of Nursing requirements, choices may not be available. Students unable to participate in the clinical courses offered will not be able to progress in the major.

While clinical hours are listed at registration, please be aware that clinical hours and placements may change. The Clinical Placement Coordinator will communicate sites and pre-placement requirements in a timely manner.

The Clinical Placement Coordinator will make decisions regarding all placement requests. Clinical placement assignments are subject to change after registration, if necessary, to meet agency and School needs. Clinical assignments may not be changed by the student or the faculty. Ideally, clinical placements are not in a setting in which students are employed.

Compliance and Immunization Requirements

Students are required to maintain compliance with all health and clearance requirements. These requirements are in place to comply with the policies of the clinical agencies where students receive learning experiences; protect the university by ensuring strict adherence to its guidelines; ensure that clients receive quality care, protect the health and wellbeing of clients, and protect the student in the clinical area. Failure to comply with these requirements will prevent the student from beginning and/or continuing in clinical nursing courses. This may alter progression in the program or lead to the rescission of admission for newly entering students. Students are responsible for the submission, maintenance and record keeping of their own health information.

The School of Nursing utilizes a vendor for tracking, access and maintenance of these immunization and compliance records throughout your academic program. Instructions for usage will be provided to you upon admission to the program and at your request from the School of Nursing office.

Many of the required items do expire each year and need to be renewed on an annual basis. You will receive notifications direct from the vendor for items that are expiring.

All Compliance and Immunization requirements are determined by the Clinical Placement Consortium Northwest and the School of Nursing policies.

Health Requirements Submission Deadlines

	Deadline
Fall Semester	July 1
January Term	December 15
Spring Semester	December 15
Summer Term(s)	May 15

Continuing students are notified of required updates as they come due.

Criminal Background Checks

Additionally, all entering students are required by state law to undergo criminal history screening at both the state and national level. All Washington schools of nursing are required to have clearance verification on students prior to participation in clinical experiences. The state and/or national criminal history background check must be repeated every year. Students will be alerted to these requirements as they become due.

A criminal history may necessitate withdrawal from nursing classes. A student has a professional responsibility to inform their advisor and the School of Nursing administration (Dean, Associate Dean of Graduate Studies, or Advisor, Admission, & Placement Coordinator) within 5 working days of any new criminal offenses. No penalty results in most cases if the offense would not affect unrestricted RN licensure in Washington and if the student reports the offense within 5 working days. If the offense would result in restrictions upon or denial of RN licensure, the student is not eligible to participate in the nursing program. (See [Decision Making Criteria for License Application](#)). Regardless of the offence, failure to divulge criminal offences to their advisor and the School of Nursing administration within 5 working days is considered a violation of standards of professionalism and integrity and will be referred to the School of Nursing Recruitment, Admission, and Progression (RAP) Committee. This may result in dismissal from the program.

Uniform Policy

While in clinical agencies and throughout clinical rotations, students are representing PLU and the nursing profession and must wear the PLU uniform. A professional appearance is imperative. The PLU uniform may be used in the clinical agencies only when a student is on official school business as assigned by the faculty. Failure to comply with the uniform policy will result in dismissal for that clinical day.

The PLU uniform consists of ceil blue scrub pants, scrub top, and white lab coat. The scrub top is embroidered with the PLU logo. The lab coat includes the PLU School of Nursing seal on the left breast pocket. Shoes shall be all-white, closed-toed, impermeable athletic or nursing shoes.

If additional layers for warmth or to cover body art while in uniform is needed, students may wear an all-white, close-fitting, non-textured, short-sleeved or ¾ length sleeved tee-shirt under the scrub top.

Individual instructors will provide specific information concerning appropriate attire for their clinical rotation, according to PLU and clinical agency expectations. Students must follow the uniform guidelines described by instructors.

Grooming and Appearance

Students must exercise good personal hygiene and present themselves in clean, well-fitting, unstained uniforms/clothing without holes or tatters. Scrub pants shall be hemmed appropriately so that the cuffs do not touch the ground.

Undergarments must be worn and should not be seen. Socks or hose must be worn. Socks shall be all-white; if hose are worn they may be neutral or white in color.

Makeup and hairstyles must be in keeping with a professional image. Hair must be fashioned to stay out of the face and eyes; if shoulder length or longer it must be tied back inconspicuously so it does not fall forward when providing care. Unnatural hair colors and extreme hairstyles are not acceptable. Moustaches and beards must be conventional and neatly trimmed. Fingernails are to be short (no longer than ¼ inch beyond the fingertip) and clean. Acrylic, false fingernails, and nail polish are not permitted as they pose a potential source of injury and infection.

Use of scents such as perfumes or heavily scented lotions or deodorants is not allowed in the patient care environment. Students who smoke should not do so in uniform as the odors cling to clothes and can have ill effects on some patients.

Tattoos must be covered unless doing so interferes with infection control. Jewelry should be conservative and appropriate. Earrings should be non-dangling. Facial, tongue, and visible body jewelry must be removed in the clinical setting.

Some clinical agencies have grooming and uniform policies that differ from the School of Nursing policies. Students are to follow the grooming and uniform policy that is more restrictive for the clinical setting.

Photo IDs

All students will wear picture identification tags when in a clinical setting. Students will obtain a clinical photo ID badge when they begin their clinical courses.

Some health agencies require that students wear an agency identification nametag. These nametags are obtained from the agency.

Transportation

Students are responsible for their own transportation between the university and clinical practice settings and are encouraged to carpool; however, the diversity of agencies makes private transportation essential. Transportation challenges are not acceptable reasons for clinical absences. Students are encouraged to have backup transportation plans should problems arise with their primary transportation. Parking areas for student use are designated by the agencies. Students are not allowed to transport clients in their private vehicles.

Privacy Protection / Computer Security

Students are expected to know and practice data and information security measures when using agency computers or private computers with access to agency data on or off-campus. These measures include, but are not limited to:

- maintaining strong confidential passwords,
- ensuring that computers are password protected and those passwords are changed at least once a semester,
- logging off computer when finished,
- not sharing computer with others once logged into the confidential system,
- ensuring that only those who have a right to know have access to the information,
- immediately reporting any breach in security, including lost or stolen computers, to instructor and appropriate facility staff.

Students may be required to complete computer security training courses prior to or during clinical setting placements.

Students receive training regarding patient confidentiality and are required to comply with the letter and spirit of the [Health Information Portability and Accountability Act \(HIPAA\)](#) at all times. Students should not discuss in any public forum (including public spaces such as elevators, hallways, cafeterias or electronic forums such as blogs or any social media such as Facebook or Twitter) client information or anything occurring in the clinical setting having to do with patients, even if names/clinical sites/treating practitioners, etc. are omitted. Students should refrain from leaving the clinical site with identifying information such as patient stickers, census sheets, etc. Students should monitor with the utmost care any written statements about patients, whether in a personal journal or in the context of classroom assignments such as clinical logs or reports. When stored in the form of data, such as saved assignments on a computer, portable drive, or disk, the student takes full responsibility for the security of this data. Students are strongly advised to protect such data with passwords and the School requests students to leave computers, portable drives or disks bearing any patient information at home. Names and personally identifying information are not to be used in any written assignment or data collection.

Students may not, under any circumstances, utilize their access to electronic medical records through the School of Nursing to directly or utilize a third party to look up medical records belonging to themselves, friends, family, or significant others as this is a violation of the HIPAA

laws. Students must go through the proper channels of the individual agencies to obtain personal medical records.

Failure to maintain the security of agency computer systems, and failure to maintain patient confidentiality in any forum is considered a breach of professional and ethical standards and will be reported to the School of Nursing Recruitment, Admissions and Progression Committee. This may result in dismissal from the School of Nursing.

Health Protection Policy

All students are expected to render safe, quality nursing care to all clients. Students are expected to know policies and procedures that reduce the risk of spread of infection to self and others. Students must demonstrate an understanding of infection control principles, including the transmission of HIV/AIDS, through tests or certification. Other skills which incorporate measures to decrease the transmission of infection will be validated in the practice laboratory prior to the clinical application.

Exposure to communicable diseases and potential physical injury are inherent risks in healthcare. Students are responsible for exercising reasonable prudence to prevent injury or risk. Students will comply with approved safety precautions so as to not compromise their own safety or that of others in the vicinity. Students who are injured or come in contact with a communicable disease should contact their clinical faculty immediately to determine appropriate action. Expenses incurred over the course of treatment for an illness or injuries acquired in the clinical setting are the responsibility of the student.

In order to protect vulnerable patients, students should not participate in clinical if they are exhibiting symptoms of a communicable disease, including fever, productive cough, diarrhea, vomiting, etc. If you are unsure if you should participate in the clinical setting, students should contact their clinical faculty. If an absence is necessary, the student will be required to make up the clinical time to meet the minimum clinical hours at the time and place determined by faculty teaching the course.

Clinical Placement Compliance

Part of the professionalism in nursing is maintaining up-to-date on safety procedures. All students must complete the following modules on an annual basis: Standard Precautions, Infectious Waste Materials, Compliance, Emergency Response Procedures, and Bloodborne Pathogens & Workplace Safety. Modules are located on the [Clinical Placements Northwest](#) website. Once completed, students shall print out the certificates of completion and submit to the Clinical Placement Coordinator for the School of Nursing.

Incident Reports

When an incident occurs, the student should notify faculty as soon as possible. Timely reporting of the incident may be essential. Students will need to fill out a [School of Nursing Incident Report](#) and possibly a [University Injury Report](#). Incidences that occur within a clinical setting will simultaneously follow facility policy on incident reporting. Students should work with faculty to help determine the appropriate action for the specific type of incident.

An incident is defined as any unusual occurrence that has resulted in the harm or potential harm (near miss) to a nursing student, faculty or staff member, visitors to PLU School of Nursing, or patients in the care of nursing students during activities associated with a course. Incidences that may be reported may include, but are not limited to: needle stick injury, general injuries, errors, and hostile environment.

- Incidence reports generated from an event occurring in the clinical setting will be submitted to the Clinical Placement Coordinator for tracking.
- Incident reports generated from an event occurring in the classroom or lab settings will be submitted to the Advisor, Admissions, and Student Support Coordinator.
- Injury reports for on-campus injuries are to be submitted to the School of Nursing Lab Coordinator

Needle Stick Injury or Bloodborne Pathogen Exposure

Exposure to bloodborne pathogens can occur through needle sticks, skin exposure to blood when skin is chapped or cut and body fluid splash to the eye, inside of nose or mouth.

All potential exposures to bloodborne pathogens must be reported to your clinical instructor and agency staff within 1 hour of occurrence. Needle stick injuries as a result of clean or dirty needles must be reported. First aid should be immediately accessed for any exposure. Immediate medical evaluation should be sought (Emergency room, urgent care, primary provider). Additional guidance for testing/treatment will be provided by your medical provider post exposure. Prophylaxis medication, if needed, should be started within 72 hours. Students are responsible for the cost of treatment for injuries sustained while in clinical / lab.

All needle stick and bloodborne pathogen exposures must be reported via clinical facility and School of Nursing incident reports.

General injuries

General injuries as a result of poor ergonomics, slip-trip-falls, etc. need to be reported as soon as possible. If immediate medical care is necessary, notification of the faculty must be reported within 1 hour of occurrence. If the injury does not require immediate medical care then the injury should be reported as soon as possible. Students are responsible for the cost of treatment for injuries sustained while in classroom / clinical / lab.

Errors

Errors resulting in the harm or potential harm of a patient must be reported to the faculty of record, or in the case of precepted clinical rotations the contracted clinical preceptor, immediately. Students who are in precepted clinical rotations would then need to report the error to their faculty of record within 24 hours.

Hostile Environment

A hostile environment may include, but not limited to: bullying, sexual harassment, sexual misconduct, lateral violence, discrimination, and physical violence. Incidences of a hostile environment should be reported to the faculty of record. If the faculty of record is involved then the incident should be reported to the Dean.

Professional Relationships in Clinical Practice

Many relationships and opportunities for students arise while in the clinical setting. Maintaining professional boundaries and relationships is essential to ethical practice. Students are requested to refrain from accepting employment and socializing outside of the clinical setting with clients or a client's family while maintaining a professional relationship.

Students should not give their home/cell phone numbers to clients or a client's family. Students should have clients contact them through either the clinical agency or through an approved method of communication as determined by the clinical faculty of record. This will help prevent unnecessary, unwanted, or inappropriate contacts. When students need to contact clients within a community, students should call their clients during the regular workday; unscheduled calls should not be made after 9:00 p.m. or on the weekend.

Students must not transport clients in their personal vehicle. Students should arrange to meet the client as needed at the health care agency.

Students should not sign as witnesses for such legal documents as surgery permits. It is also recommended students not witness wills or other similar legal documents. Refer any such requests to instructor or appropriate nursing personnel in the clinical agency.

Students are discouraged from giving gifts to faculty and clinical staff or accepting gifts from clients. Students are encouraged to show their appreciation through words and thank you notes rather than gifts.

N499 Clinical Placements

1. Several months prior to the students' enrollment in N499, the Clinical Placement Coordinator and course faculty will review the process with students at a class session.
2. Students will be provided access to a Google Form "N499 Capstone Preference Form".
3. This form allows the student to indicate their top 3 clinical focus areas and geographical areas with highest priorities emphasized.
4. The information gathered by this form is used to guide the coordination of the placements.
5. The Clinical Placement Coordinator and assigned N499 course faculty review the preference forms and strive to place students into available slots based on preference.
6. Faculty review of all suggested placement occurs to allow for input into the student's historic academic and clinical performance.
7. The goal of the practicum placement is to place the student into a setting where they will successfully be able to integrate all aspects of nursing into a cohesive beginning nursing practice.
8. Student's preferences are taken into consideration, but the focus of the placement is for the setting to be beneficial to the students' development into the professional RN role. The only guarantee through this process is that every student will have a placement in which to complete their Capstone Practicum.

While clinical hours are listed at registration, please be aware that clinical hours and placements may change. The Clinical Placement Coordinator will communicate sites and pre-placement

requirements timely. The expectation is that students will complete these pre-placement timely to avoid any delays in starting their clinical rotations.

Clinical Orientation & Electronic Medical Record (EMR) Training

Please note that students may be required to meet agency specific clinical orientation and EMR training prior to the official start of the clinical rotation. It is the student's responsibility to check PLU email and Sakai notifications several weeks before the beginning of the term as this is the method of communication for such announcements.

Participation and Attendance

Students are expected to be present for all scheduled clinical experiences. Students are expected to participate fully within their scope of practice in their clinical rotations as defined by the course objectives and the clinical setting. Students are considered to be guests during clinicals in any agency and must abide by the rules of the agency at all times.

Students having any work restrictions due to surgery, illness, pregnancy, etc., should notify their clinical instructor immediately. If an absence is necessary, the student will be required to make up the clinical time to meet the minimum clinical hours at the time and place determined by faculty teaching the course. Excessive absences may make it impossible to meet the clinical objectives and complete the course. Students who miss mandatory clinical orientation or other vital attendance requirements may not be able to pass the course.

Students should not attend clinical practice with any illness which may negatively affect clinical performance or be transmitted to a client. The student is responsible for notifying the clinical instructor and the agency according to the procedure described in course syllabi.

Many of our clinical settings are close to PLU and students may encounter family, friends, and close acquaintances who are patients. Students are may not care for family members, significant others, friends, or close acquaintances during clinical rotations as this poses ethical, legal, privacy, and personal conflict issues.

Liability Insurance

The University maintains general liability insurance that covers students while they are caring for patients or clients as part of a University course. Students should consider carrying their own liability insurance policy if they work in a nurse-related position outside of their student responsibilities.

Clinical Evaluations

All students will receive feedback (written and oral; formative and summative) from faculty regarding their performance during the clinical rotation. The length of a clinical rotation will dictate the frequency of formal evaluation sessions. In all clinicals, students are evaluated at least twice - at the middle and end of the course. Students should be aware that evaluation of clinical performance is ongoing.

Students who are not meeting minimum standards of performance are counseled in a timely manner by the instructor and are given written notification of their unsatisfactory performance

[\(Notice of Deficiency\)](#). Students may at any point be removed temporarily or permanently from clinical sites for egregious, dangerous, or unprofessional conduct.

Satisfactory clinical performance is a requirement of all clinical experiences and is required for a passing grade in the associated course.

Approved by School of Nursing Organization 5/27/15

Approved by Dean of School of Nursing 5/27/15

Appendix A

Notice of Deficiency

The School of Nursing faculty may enact a Notice of Deficiency for students who are not meeting the Essential Qualifications or not performing to academic, clinical, lab, or professional standards at any point in the academic term and program of study. The Notice of Deficiency will specify the nature of the performance concern, criteria for satisfactory performance, the timeline for achieving expected improvements, and consequences for failure to improve. The notice will be signed by the issuing faculty member and the student. The original signed form is placed in the student's School of Nursing academic file. Communication regarding the notice will be submitted by the issuing faculty member to the following School of Nursing personnel: Academic Advisor; Chair of RAP committee; Advising, Admission, and Student Support Coordinator; Associate Dean for Graduate Programs (for graduate students); School of Nursing Dean; and as appropriate, Lead Course Faculty and/or the SoN Clinical Placement Coordinator.

Deficiencies are categorized as minor and/or major based on the severity of the event. Major violations will result in immediate notification to the School of Nursing Dean. Three separate minor and/or a single major occurrences during the program of study will result in a review by the RAP committee and/or the Dean of Nursing and may result in dismissal from the School of Nursing.

All faculty are responsible for identifying and addressing occurrences. The following list is offered as a guideline for students to see the types of behaviors that may result in an issuance of a Notice of Deficiency. These are but a few examples and are in no way meant to be limiting or all in encompassing. For further information, please consult the Essential Qualifications document.

Minor occurrences may include:

- Unprofessional communication behaviors
- Inappropriate professional dress in clinical or lab
- Inappropriate utilization of technology during class
- Not being prepared for learning in lab, clinical, or classroom
- Failure to demonstrate the expected level of clinical competency
- Turning in late, wrong, unfinished, or incomplete assignments
- Tardiness and/or absences from lab, clinical, or classroom (excused and unexcused)
- Inappropriate behaviors and/or lack of judgment relative to assigned clinical activities, professional relationships, or interactions that are part of the learning environment
- Poor performance in the lab, clinical environment, or classroom
- Other disruptive lab, clinical, or classroom behaviors

Major occurrences:

- Life-threatening errors
- Unsatisfactory clinical performance
- Failure to report an incident

- Falsifying medical records
- Cheating/Plagiarism
- HIPAA violations
- Professional misconduct and safety Issues as defined in the School of Nursing Student Handbook
- Violations of the law or other legal regulatory requirements
- Other unsafe behaviors

Any occurrences that place the client, self, or others in potential immediate danger will result in immediate review by the Dean.

Information on Occurrence:	Student's level in the SoN program:
Report date: _____	<input type="checkbox"/> Sophomore I <input type="checkbox"/> Sophomore II
Student name: _____	<input type="checkbox"/> Junior I <input type="checkbox"/> Junior II
Course number: _____	<input type="checkbox"/> Senior I <input type="checkbox"/> Senior II
Issuing faculty: _____	<input type="checkbox"/> ELMSN <input type="checkbox"/> MSN <input type="checkbox"/> DNP

Details of deficiency:

1. Description of deficiency:

2. Issuing faculty comments:

3. Student comments:

4. Student goals:

5. Timeline for completion:

6. Consequences for failure to achieve student goals and timeline:

Student Signature: _____ Date: _____

Issuing Faculty Signature: _____ Date: _____

Reporting Documentation:

Student notified by issuing faculty on: _____ (Date)

Submit the original form via inter-office mail, Fax (253) 535-7590, or hand delivery to the School of Nursing office for placement in student file: _____ (Date).

The following individuals were notified by issuing faculty on: _____ (Date)

Academic Advisor: _____ (Name)

Lead Course Faculty (as appropriate): _____ (Name)

School of Nursing Clinical Placement Coordinator (as appropriate)

Advising, Admission, and Student Support Coordinator

Chair of RAP

Associate Dean for Graduate Students (for graduate students only)

Dean of the School of Nursing (major deficiency)

Appendix B

PACIFIC LUTHERAN UNIVERSITY

School of Nursing

***Statement of Understanding, Acknowledgement, and Compliance for
Essential Qualifications***

Student signature below indicates that the student understands, meets, and will continue to meet all of the above qualifications at their current level in the program. If a change occurs to the student's status that results in the student no longer being able to meet the Essential Qualifications, the student is to contact Disability Support Services to request addition and/or revision of reasonable and appropriate accommodations to be successful in the nursing program. Disability Support Services, the Chair of the Recruitment, Admission, and Progression (RAP) committee, the School of Nursing Dean, and faculty teaching in the School of Nursing may be consulted in order to identify reasonable accommodations, if any, that will meet the course and program objectives. While the School of Nursing will make every effort to work with our students with disabilities to accommodate their disability-related needs, it is important to note we are not required to provide requested accommodations that would fundamentally alter the essential functions or technical standards of the program or that are not reasonable and possible within the scope of School of Nursing resources. Additionally, we cannot guarantee that specific accommodations will be accepted within our partnering clinical settings and organizations.

Student Name (Please Print)

Student Signature

Date