

# SOUTH HALL HOUSING OPTIONS

Residential Life ♦ Pacific Lutheran University ♦ 2009-2010

## **Studio Type A**

Studio Apartments consist of one multipurpose room that serves as bedroom, living room and kitchen. A full bathroom is attached. Shape and layout of the studios vary.

Size: Type A Studios range from 296 - 299.5 square feet.  
Cost: \$3010 per semester.  
Location: Type A Studios are located throughout the building on floors 0 - 3.  
Number: There are 8 Type A Studios in the building.

## **Studio Type B**

Studio Apartments consist of one multipurpose room that serves as bedroom, living room and kitchen. A full bathroom is attached. Shape and layout of the studios vary.

Size: Type B Studios range in size from 328 - 355 square feet.  
Cost: \$3070 per semester.  
Location: Type B Studios are located throughout the building on floors 2 - 4.  
Number: There are 4 Type B Studios in the building.

## **Studio Type C**

Studio Apartments consist of one multipurpose room that serves as bedroom, living room and kitchen. A full bathroom is attached. Shape and layout of the studios vary.

Size: Type C Studios range in size from 452 - 465 square feet.  
Cost: \$3180 per semester.  
Location: Type C Studios are located throughout the building on floors 1 - 2.  
Number: There are 7 Type C Studios in the building.

## **1 Bedroom Townhouse (Loft)**

Townhouses are two-storied apartments with an entrance off the 3<sup>rd</sup> floor hallway. The first level contains a kitchen area, living room/dining area and full bathroom. A staircase leads from the living room up to the second level where the bedroom loft is located. This loft is partially open to the lower level to allow access to the windows.

Size: 1 Bedroom Townhouse lofts are 492 square feet in size.  
Cost: \$3360 per semester for the unit  
Location: 1 Bedroom Townhouse lofts are located on the 3<sup>rd</sup> and 4<sup>th</sup> floors of the south wing.  
Number: There are 8 of these apartments in the building.

## **2 Bedroom Townhouse**

Townhouses are two-storied apartments with an entrance off the 3<sup>rd</sup> floor hallway. The first level contains a kitchen area and living/dining area. A staircase leads from the living room up to the bedrooms and bathroom on the second level.

Size: 2 Bedroom Townhouse apartments range in size from 828.5 - 924 square feet.  
Cost: \$3005 per semester per resident.  
Location: 2 Bedroom Townhouses are located on the 3<sup>rd</sup> and 4<sup>th</sup> floors of the south wing.  
Number: There are 18 of these apartments in the building.

## **2 Bedroom Apartment**

2 Bedroom Apartments consist of a kitchen area, living/dining area, full bathroom, and two bedrooms.

Size: 2 Bedroom Apartments range in size from 701 - 805 square feet.  
Cost: \$2895 per semester per resident.  
Location: 2 Bedroom Apartments are located throughout the building on all floors.  
Number: There are 26 of these apartments in the building.

## **4 Bedroom Apartment**

4 Bedroom Apartments consist of a kitchen area, living/dining area, two full bathrooms and four bedrooms.

Size: 4 Bedroom apartments range in size from 1,1019.5 - 1,280 square feet.  
Cost: \$2820 per semester per resident.  
Location: 4 Bedroom Apartments are located throughout the building on all floors.  
Number: There are 27 of these apartments in the building.

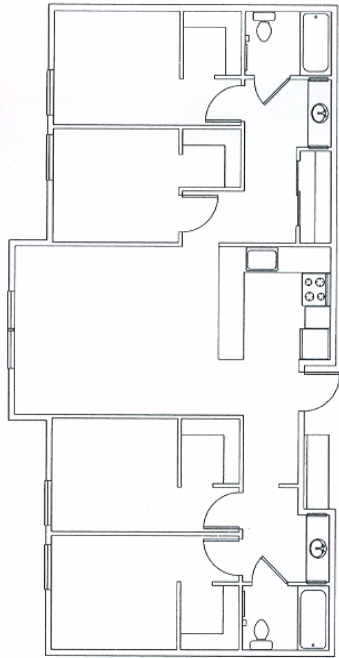
## **5 Bedroom Townhouse**

Townhouses are two-storied apartments with an entrance off the 3<sup>rd</sup> floor hallway. The first level contains a kitchen area, living room/dining area and full bathroom. A staircase leads from the living room up to the second level where the bedrooms and a second bathroom are located.

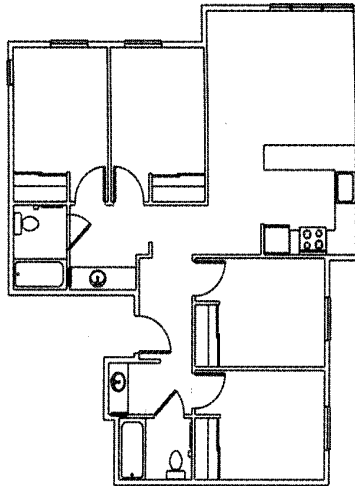
Size: The 5 Bedroom Townhouse apartment is 1,577 square feet in size.  
Cost: \$2895 per semester per person.  
Location: The 5 Bedroom Townhouse is located on the 3<sup>rd</sup> and 4<sup>th</sup> floors of the south wing at the west end.  
Number: There is 1 of these apartments in the building.

# SOUTH HALL APARTMENT FLOOR PLANS

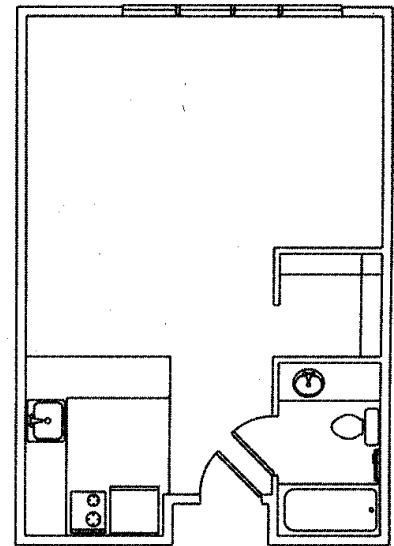
Residential Life ♦ Pacific Lutheran University ♦ 2009-2010



**Four Bedroom Hallway Unit**



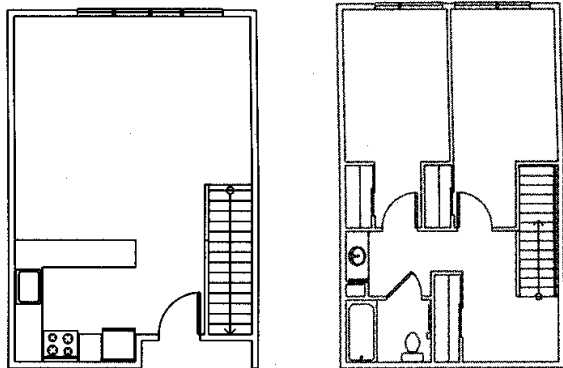
**Four Bedroom Corner Unit**



## Studio Apartment

Studio A = smallest size  
 Studio B = medium size  
 Studio C = largest size

Specific layouts and dimensions of studios vary significantly throughout the building.



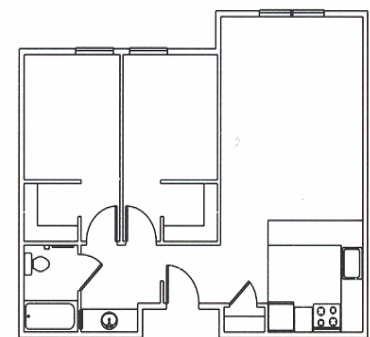
Downstairs

**2 Bedroom Townhouse**

## Also Available

2 Story Loft Apartments

5 Bedroom Townhouse



**Two Bedroom Apartment**

Floor plans may vary in some units depending on location in the building.  
 Sketches are not to scale.