



Scandinavian SCENE

JANUARY/FEBRUARY 2011

PUBLISHED BY THE SCANDINAVIAN CULTURAL CENTER AT PACIFIC LUTHERAN UNIVERSITY

Lecture by Signe Aarhus
“Wearing Your Values: The Fabric of Entrepreneurship”
Wednesday, February 23, 2011
Reception: 6:00PM - Lecture: 7:00PM Free Admission

The textile industry is the oldest industry in the world. Oleana is one of the youngest factories in Norway and the only one of its kind that both knits and sews everything that is produced in their own factory. Oleana is located in Espeland, just outside Bergen, on the west coast of Norway. On Wednesday, February 23, 2011, Signe Aarhus, Oleana cofounder, will share insights into the highly competitive world of entrepreneurship. According to Aarhus, “Oleana started in 1992 in the



Signe Aarhus (center), her assistant Torbjørg Grøttveit (left) and Laura Almæss (right), a U.S. Oleana representative.

hope of creating new jobs in the textile industry in Norway. Most of Western Europe’s production has been moved to countries with far cheaper labor, but we wanted to show that it is still possible to produce in a high-cost country like Norway. We have always tended towards alternative thinking and going against the main stream.” She also maintains that “people all over the world are becoming more aware of what they buy. By thinking more about the choices we have when we shop, we can share in taking care of our planet. Oleana takes pride in using only ecological natural fibers: wool, silk, alpaca and cashmere, and emphasizes design and quality.”

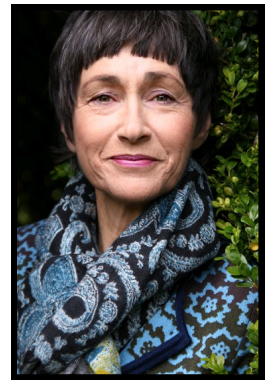
the Oleana collection through her colorful and well-developed sense of ornamentation and shape. In 2000 she was awarded the highly sought-after Jacob Prize – Norway’s highest award in design, crafts and architecture. Along with Oleana, she has received the award for Design Excellence from the Norwegian Design Council a total of six times. Solveig Hisdal authored, *Poetry in Stitches: Clothes You Can Knit*, which includes knitting instructions and patterns for over twenty of her designs.

A collection of Oleana products will be on display in the Cultural Center’s Stuen Room from now through March 30. The Oleana line of sweaters and blankets will be carried in the Scandinavian Shop at PLU’s Garfield Book Company.



Oleana: Fra drøm til eventyrlig virkelighet (Oleana: From Dream to Fairytale Reality) was co-authored by Signe Aarhus, Kolbjørn Valestrand, and Solveig Hisdal.

Oleana designer Solveig Hisdal (right) is regarded as one of Norway’s best textile designers and her signature is clearly visible in



Designer Solveig Hisdal

President's Message

HAPPY (albeit belated) NEW YEAR! It's the catch phrase of each January, and this year, it has special meaning to me. 2010 may have been great for you, or ... not so much, as it was for many of us, but either way, one is renewed by the thought that this year, 2011, is a chance to begin again, to do things differently and is filled with hope for a better year ahead.



I'm so grateful for the Cultural Center, and the opportunity to meet individuals who care about their heritage and nurturing the connection to our ancestors who made it all possible. The life they had was so different that ours today, but I think about how proud they would be that their time in history is being cherished and honored. A few weeks back I had a chance to talk with several Norwegian students about contemporary Nordic culture and was not surprised to hear how so many of the customs had survived the decades, and even a century of change. Of course, some have evolved in new ways, but the intent remained the same.

This year, my wish is that you will enjoy the Cultural Center in a new way. Whether it's attending an event that is new to you, help set up an exhibit, or volunteering once a month; try something new. Thank you for all you do already to support the center, and I do wish you a wonderful, happy and healthy 2011. ~Hilsen, Lisa Marie



Director's Comments

If you are like me, the new year crept up on you before you even knew it. I have to confess that is exactly what happened and the reason we were delayed in publishing this issue of the *Scandinavian Scene*. January was a very quiet month so the deadline could be safely moved back. I firmly believe that most New Year's resolutions are "made to break," which is why I quit making them years ago! However, I do "resolve" to make every attempt to meet future newsletter deadlines!

Even though January was quiet, we did host the second movie in our Nordic Film Series. The Danish-made movie entitled "Brothers," was a riveting drama about two brothers who had to learn to negotiate changing roles and shifting family dynamics when one was sent to war in Afghanistan. The film was remade as an American production with the same title (2009), directed by Jim Sheridan. The next film in the series "The Bench," will be shown on Sunday, February 20. (See p. 6 for details).

We are working on other exciting programs for 2011 to include lectures, musical entertainment, and annual events. Exhibits are also a part of our upcoming calendar. In May, the exhibit will be entitled "Voyages of Discovery: From Past to Present." It will include contemporary ceramics, sculptures, paintings, weavings, and much more. The exhibition will be sponsored by the Scandinavian Cultural Center and Nordic 5 Arts, an organization in the San Francisco Bay area where artists with a common heritage exhibit their work. The group is comprised of professional artists of Nordic/Scandinavian descent and artists born in Denmark, Finland, Iceland, Norway, and Sweden. It will be on display from early April to mid-November.

We hope you will join us for as many events as you can and that you will enjoy them as much as we enjoy planning them! ~Have a great day—Susan

Nordic Porcelain & Textiles: When Industry and Beauty Combine

On display until March 30, 2011, is our latest exhibit entitled, “Nordic Porcelain & Textiles: When Industry and Beauty Combine.” The exhibit is an exquisite blending of porcelain and textiles that have become Nordic icons. The exhibit is comprised of over 200 porcelain pieces drawn exclusively from the SCC Artifact Collection along with a colorful array of Norwegian Oleana sweaters and blankets.



The inspiration for displaying the porcelain came when we received a magnificent collection of porcelain plates belonging to Lillian Spanich, who regrettably passed away recently. The exhibit includes plates produced by Bing & Grøndahl, Royal Copenhagen, Porsgrund, Rørstrand, and Arabia. A large number of Lillian’s plates are on display along with those of other generous donors (i.e., William and Janice Baxter, Verona Bekkedal, Daughters of Norway Embla #2 (from the estate of Margaret Richards), Mary Forsberg, Shirley McLane, Inge Miller, Arne and Gloria Pederson, Bernice Rogers, and Claire Thue). We are grateful to each donor and their families for contributing these timeless treasures to the Center’s Artifact Collection. The exhibit bay pictured upper left includes four porcelain plates (with Viking motifs) that are part of the Danish Heritage Series produced by Bing & Grøndahl, Denmark. The three Viking figurines and the Viking ship with the red-striped sail are Norwegian Henning woodcarvings donated by Bernice Rogers). The Viking ship (far left) and the Viking warrior etching were donated by the estate of local artist Robert Warren of Tacoma. Mr. Warren built the ship to scale (1/4” = 1 foot). The etching is one of four depicting warriors from around the world.

The inspiration for the textile portion of the exhibition is an outgrowth of the upcoming visit by Oleana co-founder Signe Aarhus on February 23 (See p. 1 for details). A collection of Oleana sweaters, skirts, scarfs, and blankets are on display in the Cultural Center’s Stuen Room. The room is alive with the vivid colors that are synonymous with Oleana.

A Tribute to Lillian Spanich (written by her sister): *“Lillian left a wonderful legacy for all those who are immersed in the tradition, culture, and arts of their ancestral homelands. She loved the camaraderie of others who shared her passion for the importance of heritage. She was thrilled to find her father’s birthplace on the beautiful island of Langeland, Denmark, small in size, but rich in picturesque farm land. When in Denmark, the Bing & Grøndahl factory was first on Lillian’s list of places to visit. She adored the blue and white plates with motifs depicting Danish history and everyday life. Lillian became interested in Danish folklore at a young age, attending the Danish Lutheran Church on South L Street in Tacoma. She cherished the memories of the people there and Danish traditions they shared. We are pleased that Lillian’s porcelain collection has a good home.”*



Fond Memories of Christmas Past

The 2010 Christmas events were very well attended and enjoyed by all. The Christmas season actually begins in mid-November at the Scandinavian Cultural Center with the annual Christmas in Scandinavia exhibit. This year's there was "Let It Snow," complete with trees, tomtar, nisse, wrapped gifts, and straw goats!



The ever-popular Sankta Lucia Fest drew a crowd of about 400. Emma Struss was crowned as the 2010 Lucia and received a scholarship to aid with her studies at PLU. A total of 17 students participated in the program which included the main performance in Lagerquist Hall, a trip to IKEA (the program's co-sponsor), and a visit to a local retirement home.

Many thanks to SCC members Carroll and Delores Kastle, Kate Emanuel-French, Ericka Michel, and Melody Stepp for their help in mounting the Christmas exhibit. Thanks also to the magnificent men and women who helped to make the Sankta Lucia Fest the success that it was. A special thank you to Allan and Clarene Johnson for overseeing the reception portion of the program. Great job everyone!



A Picture is Worth a Thousand Words

The Norwegian Candlelight Christmas Service is an annual tradition for many SCC members and their families. The students in the Scandinavian Area Studies Program did an excellent job reading scriptures in Norwegian, a great testament to the level of their learning. A special thank you to Professor Emeritus David Dahl for providing the piano accompaniment.



The holiday events culminate each year with the Nordic Christmas Fest and the presentation of the SCC Outstanding Service Award. SCC Director Susan Young and the 2009 Outstanding Service Award recipient, Maynard Hedegaard, presented the award to Audun Toven for his support of the Center and Pacific Lutheran University for over four decades. Audun is picture here with Maynard Hedegaard (left), Susan Young (lower left) and his daughter Brit and son-in-law Ethan (below)..



SPRING 2011 CALENDAR OF EVENTS

Nordic Film Series

(See p. 5 for more details.)

“The Bench”

Sunday, February 20, 2:00PM Free Admission

“Open Hearts”

Sunday, March 6, 2:00PM Free Admission

“The Five Obstructions”

Sunday, May 1, 2:00PM Free Admission

(Note date change)

Lecture by Signe Aarhus

“Wearing Your Values: The Fabric of Entrepreneurship”

Wednesday, February 23

Reception: 6:00PM - Lecture: 7:00PM Free Admission

(See p. 1 for more details.)

A collection of Oleana products will be on display in the Cultural Center’s Stuen Room from February 1 through March 30. The Oleana line of sweaters and blankets will be carried in the Scandinavian Shop at PLU’s Garfield Book Company.

CULTURAL EXHIBITS

Nordic Porcelain: When Industry and Beauty Combine

January 16—March 30

(See p. 3 for more details.)

Public Hours—Free Admission

Sundays, 1:00PM-4:00PM, Tuesdays/Wednesdays, 11:00AM-3:00PM

No Public Hours on April 24, May 8, May 29, June 20, July 3

CLASSES AND MEETINGS

Norwegian Language Classes, Beginning/Intermediate Levels, Sundays, 5:00PM, University Center 212. Contact Camilla Rico, 253-535-4301 <rico@plu.edu>.

Danish Sisterhood, February 2, March 2, April 6, May 4, 11:00AM, INFO: 253-843-2249

Norwegian Cooking Classes, March 10, 15, 22, 10:00AM, \$5 PER CLASS, INFO: 253-838-4232

Western Rosemalers Quarterly Meeting, April 17, 3:00PM, INFO: 253-841-3392

Norwegian Heritage Festival, April 30, 11:00AM—3:00PM, INFO: <ybraune1@hotmail.com>

Danish Sangaften, February 20, March 20, April 17, May 15, 6:00PM, INFO: 253-984-6700

SCC Council, February 9, March 9, April 13, May 11, 5:30PM

Norwegian Rosemaling Classes, May 10, 21, 22, 9:00PM—4:00PM. INFO & TO REGISTER 425-882-3647.

News and Notes

The Scandinavian Shop

The Garfield Book Company at PLU (208 Garfield Street, Tacoma) offers special discounts to SCC members. Be sure to stop by the store during the entire month of February to take advantage of 20% off any Scandinavian product that has a heart on it.

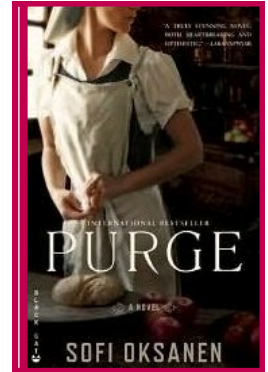
Did you know? ...

The Scandinavian Book Club meets monthly in the Garfield Book Company and **newcomers** are always welcome.

March 10, 2011 6:00-7:00 PM

Purge by Sofi Oksanen

Power and loss are the themes of *Sofi Oksanen's* gripping novel, *Purge*. The title of this bestseller alludes to the mass deportation to Stalin's gulags (prison camps) of those Estonians deemed to have collaborated during the 1941-44 German occupation. The purge is pivotal for the family at the center of her story, but Oksanen also moves beyond the bitter dilemmas of collusion and resistance to deal with the more private horror of violence during both peace and war



Nordic Film Series Continues with "The Bench"

Sunday, February 20, 2:00 PM

Scandinavian Cultural Center - Free Admission



The Bench (2000) is an intense and realistic drama about a man named Kaj whose life paths eventually lead him into deep alcoholism. Directed by Per Fly and it is a must-see for movie buffs everywhere. This movie is the first of a trilogy which portrays situations and characters from the lower, upper, and middle classes of Denmark. Following *The Bench*, the trilogy continues with *Arven* (*The Inheritance*, 2003) depicting Denmark's upper class, and *Drabet* (*Manslaughter*, 2005) focusing on the middle class. In February 2001, *The Bench* won five awards including Best Film, Best Director, and Best Actor (Jesper Christensen) at the Danish Film Academy's Robert Awards, the Danish equivalent of the American *Oscars*. *The Robert* was awarded for the first time in 1984 and is named after the statuette's creator, Danish sculptor Robert Jacobson.

Two additional Danish films will complete the series:

Open Hearts (2002), Sunday, March 6

The Five Obstructions (2003), Sunday, May 1 (note date change)



Scandinavian SCENE

PACIFIC LUTHERAN UNIVERSITY

12180 Park Ave. S.
Tacoma, Washington 98447-0003

ADDRESS SERVICE REQUESTED

PRESORTED
FIRST-CLASS MAIL
U.S. POSTAGE PAID
TACOMA, WA
PERMIT NO. 416

The *Scandinavian Scene* is a bi-monthly newsletter published for members and friends of the SCC.
Susan Young, Editor 253-535-7322/253-535-7349 Email: youngse@plu.edu Website: www.plu.edu/~scancntr

EXECUTIVE BOARD

SCC Director-Susan Young
President-Lisa Ottoson
Vice President-Kim Kittilsby
Treasurer-Karen Giguere
Secretary-Kathrina Jaech
Immediate Past President-Gunnulf Myrbo
Advisory Member-Douglas Oakman, Dean of Humanities
Scandinavian Studies Program -
Troy Storfjell and Claudia Berguson
Scandinavian Immigrant Experience Collection -
Kerstin Ringdahl

DOCENTS

Christine Beasley
Ken & Polly Christopherson
Esther Ellickson
Margie Ellickson
Kate Emanuel-French
Phylaine Folson

GROUP COORDINATORS

Outreach-Lisa Ottoson
Activities-Gunnulf Myrbo
Services-Janet Ruud

Julie Ann Hebert
Delores & Carroll Kastelle
Betty Larson
Ulla Lindwood
Florence March
Phyllis Mjorud
Carol Tower
Thelma Willis

COMMITTEE CHAIRS

Artifacts-Susan Young
Classes-Kathrina Jaech
Docents-Position Open
Endowment/Fundraising-Ed Larson
Exhibits-Susan Young/Melody Stepp
Hospitality-Clarene Johnson
Kitchen-Norita Stewart
Programs-Lisa Ottoson
Publicity-Karen Bell
Textile Curator-Linda Caspersen-Andresen
Webmaster-Gunnulf Myrbo/Susan Young

CORPORATE SPONSORS

 **Presenting Sponsor (\$5000+ level)**
Wells Fargo Management

Major Sponsors (\$2001-\$4999)

 **IKEA**-Seattle

 Thrivent Financial for Lutherans

SITTING COUNCIL- MEMBERS

Allen Johnson
Karen Kunkle
Betty Larson
Ed Larson
Judy Scott
Audun Toven
Julie Watness

ASSOCIATE COUNCIL- MEMBERS

Laila Hansen
Tom Heavey
Maynard Hedegaard
Carol Kemp
Marge Kunschak
Ulla Lindwood
Inge Miller
Gail Sawyer
Nicki Tollefson