



PLU

GATEWAY SEMESTER
STUDY AWAY PROGRAMS

WANG CENTER FOR GLOBAL
EDUCATION



photo compliments of Hallie Peterson



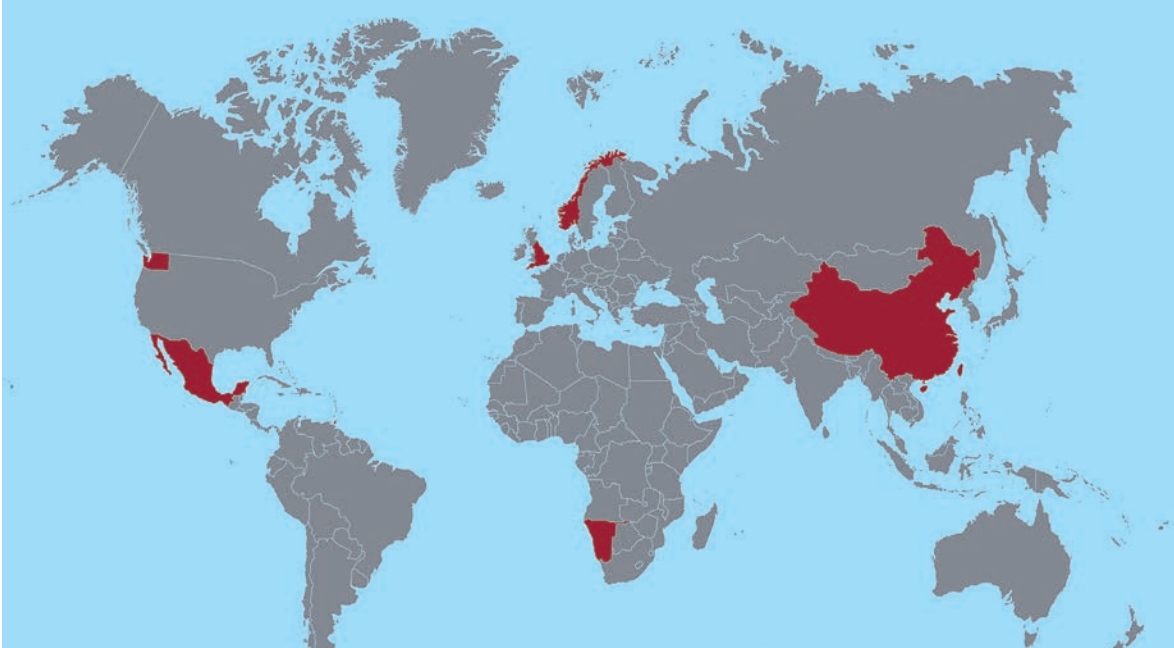
photo by Tamara Williams



photo by Euan Koepfler



photo by Neal Sobama



ABOUT US

The Wang Center for Global Education was established in 2002 thanks to the vision of donors Peter (60') and Grace Wang.

Working collaboratively with academic units and disciplines of Pacific Lutheran University, the Wang Center is dedicated to supporting faculty, students and staff with the resources necessary to advance PLU's distinction and vision for global education of "educating to achieve a just, healthy, sustainable and peaceful world" through faculty development and grant opportunities, delivery of study away programs, on-campus programming on pressing world issues and a commitment to best practices when engaging with educational partners, both locally and globally.

GLOBAL SCHOLAR AWARD

All PLU Gateway Programs are Global Scholar Award eligible. This need-based award can cover out-of-pocket expenses up to \$2,500. Applications available online or at the Wang Center. Due at the time of application to the semester program.

Students are encouraged to apply for other study abroad scholarships. Information available on the Wang Center website.

OVERVIEW

Studying away for a semester requires planning and preparation. You will work with Wang Center advisors, faculty advisors, Gateway Program Directors, financial aid counselors, and family to ensure you have selected the program that meets your academic, professional and personal goals.

The PLU Gateway Semester Study Away Program fee is the same as attending PLU while living on campus. While studying away you are registered as a full time PLU student and earn PLU credits. This allows you access to your financial aid, gift aid and scholarships. Additionally, you will want to budget for expenses such as books, the flight, and personal spending money in the country. If you are eligible, the PLU Global Scholar Award helps offset these out-of-pocket expenses. There are other sources of funding available for semester study away.

The application, available on the Wang Center website, requires two recommendations and essays that demonstrate you are a good fit for the program and are prepared to study and represent PLU in another country.

PLU GATEWAY PROGRAMS

CHENGDU, CHINA (page 4)

Continuity and Change in an Emerging World Power

OAXACA, MEXICO (page 6)

Development, Culture and Social Change in Mexico

OSLO, NORWAY (page 8)

Peace and Conflict Studies

OXFORD, ENGLAND (page 10)

International Honors Program in Social Justice

TELEMARK, NORWAY (page 12)

Culture, Business, and Sustainability in Norway

TRINIDAD & TOBAGO (page 14)

Energy, Environment and Cultural Fusion

WINDHOEK, NAMIBIA (page 16)

Capacity Building for Education, Nursing & the Natural Sciences in an Emerging Democracy

LIFE-CHANGING ADVENTURES in learning that empower you with the knowledge and experience required to thrive in a complex world.

PLU GATEWAY PROGRAMS: THEME-BASED STUDY AWAY PROGRAMS FOCUSED ON ISSUES RELATED TO DIVERSITY, JUSTICE AND SUSTAINABILITY

EXAMINE GLOBAL ISSUES

Programs engage students with the interconnected global issues related to human diversity, social justice, and the fragility of our planet as they impact specific communities, regions and nations both abroad and at home. Examined issues include: human rights, migration, post-conflict resiliency and peace-building, capacity building in emerging democracies, global health, tourism, energy and the environment, identities and cultural expression.

ACQUIRE SKILLS TO LIVE, LEARN AND WORK IN A GLOBAL CONTEXT

A combination of program features contributes to the development of the cross-cultural and language skills required for constructive collaboration among diverse and interdependent communities in a range of fields and professions adding value to a PLU degree. These features include: place-based academic coursework, Group Study Tours that engage students with community, non-profit and government leaders, a homestay or student housing abroad, and opportunities to engage in independent research, an internship, or a service-learning project.

INTEGRATE ACADEMIC, CAREER AND PERSONAL GOALS

Before, during, and after studying away, students are encouraged to reflect upon their academic, professional, and personal commitments as well as to integrate the knowledge and skills gained in the study away experience in setting future goals. PLU Gateway alums rely on the knowledge, skills, and contacts made during their study away experience in Senior Capstone projects, Wang Center grant applications and local internship opportunities, in their Peace Corps, Fulbright and graduate school applications, and in seeking meaningful employment opportunities upon graduation.

WHY STUDY AWAY?

- ◆ Develop new perspectives on academic subjects and real-world issues
- ◆ Achieve proficiency in another language
- ◆ Experience personal growth
- ◆ Develop valuable career skills

Employers realize the extraordinary benefits of study away, and are seeking out these graduates. Key job skills such as adaptability, global understanding, leadership, and independence are directly fostered by learning and living abroad.



photo by Charles Bergman



photo by Jan Weiss

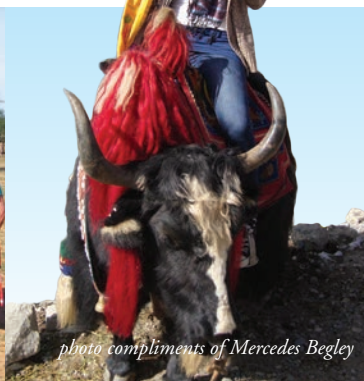


photo compliments of Mercedes Begley



photo by Neel Sobania

CHENGDU

Continuity and Change in an Emerging World Power



PLU IN CHINA

Fall 2015

August to December

Full Year 2015-2016

August to May or July

Nestled in a rich agricultural basin near the foothills of Tibet, Sichuan Province is China's most populous. Within the mixture of modern cities and rural villages is Chengdu, the provincial capital – home to Western China's best universities and hospitals, and a major site for foreign and domestic investment, including global industry leaders like Microsoft, Boeing and Intel.

PROGRAM FOCUS

Chinese Language & Culture, Business, Global Studies, Religion, Anthropology

“Being a Chinese Studies major, PLU’s Gateway Program in Chengdu was something I had always wanted to do. What I didn’t know, however, was how much living in China would fuel my interest in cultural diversity and instill in me a lifelong passion for Global Studies. Immersing yourself in a culture so uniquely different from your own is an invaluable experience that will truly open your eyes to the world around you in a way nothing else can.”

—Mercedes Begley

FALL COURSES

REQUIRED (10-14 CREDITS)

CHIN 101/102/201/202/350 (4-8 credits)

Chinese Language

CHSP 350 (SO – 4 credits)

Contemporary Chinese Culture and Society

CHSP 350 (2 credits)

Western China: The Rural and Minority Experience

ELECTIVE (UP TO 7 CREDITS)

BUSA 309 (4 credits)

Creating Value in Operations
PLU Site Director course

BUSA 352 (3 credits)

International Business Trade Practices & Procedures
SCU Professor Wen Jia

HIST 339 (3 credits)

The 20th Century History of China
SCU Professor Zhou Yi

POLS 387 (3 credits)

Chinese Politics: Historical Ideas to Contemporary Realities
SCU Professor Zhou Yi

POLS 332 (3 credits)

Sino-American Relations (3)
SCU Professor Song Zhihui

RELI 350 (3 credits)

Daoism & Traditional Chinese Culture
SCU Professor Zhang Chongfu

ARTD 350 (1 credit)

Introduction to Chinese Calligraphy
SCU Staff

PHED 276 (PE- 1 credit)

Introduction to Kung fu
SCU staff

PHED 276 (PE- 1 credit)

Introduction to Taiji
SCU Staff

PHED 276 (PE- 1 credit)

Ping Pong
SCU Staff

INTERNSHIP OPTION

Students may apply separately for a part-time international work experience in Chengdu. Students earn 2 credits of COOP 477 or departmental credit may also be arranged.

GROUP STUDY TOURS

This program engages students in the various cultures of China as an integral part of the required courses that explore Chinese culture and the minority experience. Students are first introduced to the Forbidden City and the Great Wall in Beijing and then take an overnight train to Xian whose famous Terracotta Warriors and Wild Goose Pagoda are a reminder of China's prominence in the world as the eastern terminus of the Silk Road. Finally, students fly into Chengdu, home to China's pandas and a sizable Tibetan minority population, and prepare for their semester of study at Sichuan University.

While in Chengdu, students engage with local communities through study tours to rural farms, local villages and nearby monuments such as Emei Mountain. In October, students visit a Tibetan Region for a week of discovery to explore Buddhist temples, and shrines, a culture vastly different than its surrounding regions.

PROGRAM FEATURES

- ◆ Sichuan University courses
- ◆ On campus housing
- ◆ PLU Faculty Site Director
- ◆ Language taught at all levels
- ◆ Internship Option

FULL YEAR OPTION

Full year students take language and electives in English from SCU instructors in the spring semester. Spring electives are similar to fall electives, with some additional courses. SCU offers two academic calendars, allowing students to choose to study until May, or continue language study until early July.

AT A GLANCE

- ◆ Fall Semester Program with year long option
- ◆ 2.7 GPA, 3.0 preferred
- ◆ No previous language required
- ◆ Up to 18 PLU credits

CONTACT

Program Director
Dr. Gregory Youtz
Professor, Music

youtzgj@plu.edu
253-535-7619

Site Director Fall 2015
Dr. Brian Maeng

Assistant Professor
School of Business

maeng@plu.edu
253-535-7301

Tanya Ulsted
Study Away Coordinator

ulstedtj@plu.edu
253-535-7628

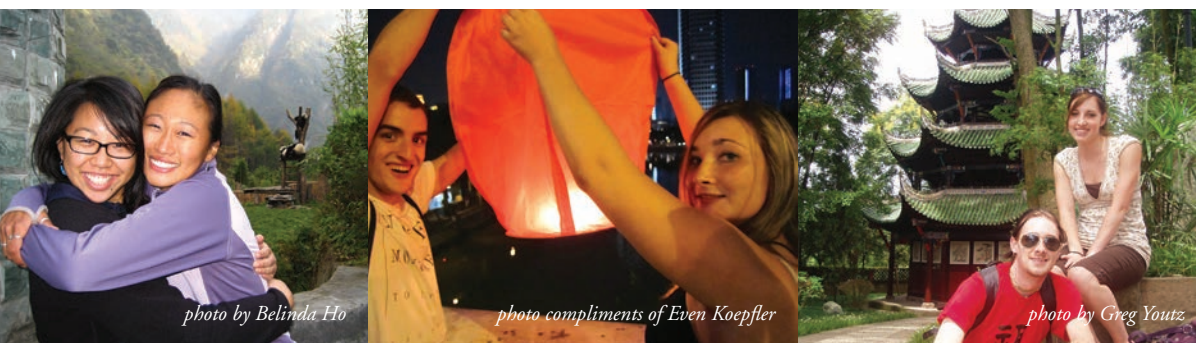


photo by Belinda Ho

photo compliments of Even Koepfler

photo by Greg Youtz



photo compliments of Even Koepfler



photo by Neal Sobania



PLU IN MEXICO

Fall 2015
August to December

Situated in the Oaxaca Valley and surrounded by mountain peaks reaching as high as 10,000 feet, Oaxaca is almost as biologically diverse as its people. With roughly sixteen linguistically and culturally isolated indigenous communities, Oaxaca is a microcosm of the diversity and cultural richness of contemporary Mexican society and culture.

While rich in history and culture, the State of Oaxaca lags behind the rest of Mexico in economic areas. This program examines how the Oaxacan community has organized and responded to some of its most difficult social and economic problems, along with exploring development, culture and social change in contemporary Mexico.

PROGRAM FOCUS

Spanish language, Latin American Studies, development, human rights, social justice, and sustainability

“My Environmental Studies Internship with Zapotec Pueblos Mancomunados, an indigenous ecotourism cooperative in the Sierra Norte of Oaxaca, challenged me to recognize the complexities of development, conservation of natural resources, and social justice.”

—Reed Ojala-Barbour,
past participant

COURSES

SESSION I: 4-5 CREDITS

Three-week language intensive and general introduction to Oaxacan culture and society designed to improve overall language proficiency.

HISP 301/401 (4 credits)

PHED 250 (PE – 1 credit)

Beginning Salsa (optional)

SESSION II: 8 CREDITS

Eight-week semester of coursework in other disciplines allows students to take two content courses taught in Spanish.

ANTH 387 (SO – 4 credits)

Mexican Anthropology 1909-2004

SOCI 377 (SO – 4 credits)

Oaxacan Society

HIST 377 (SO – 4 credits)

History of Mexico in Oaxaca

HISP 401 (C – 4 credits)

Advanced Grammar and Composition

HISP 433 (LT – 4 credits)

Between Two Borders: Trans-Mexican Migrations in Literature and Film

UPS Professor, Pepa Lago Graña

SESSION III: 4 CREDITS

During this four-week session students select from a full time internship or a course in the extraordinary arts of Oaxaca.

ARTD 387 (AR – 4 credits)

Oaxacan Arts

COOP 477 (4 credits)

International Work Experience

INTERNSHIP OPTION

Students may apply separately for a supervised educational internship experience in a non-profit or community organization in Oaxaca. Past participants have been placed in local organizations involved with ecotourism, social responsibility and community building, public health, education, and the environment. Students earn 4 credits of COOP 477 or departmental credit may also be arranged.

GROUP STUDY TOURS

Group Study Tours deepen knowledge of Mexico's past as well as nuance and complicate students' knowledge of pressing issues facing Mexico today. Oaxaca Program participants visit World Heritage archeological sites and museums as well as engage in meetings and dialogues with community, non-profit, union and government leaders, Mexican scholars, artists, and intellectuals to learn about diverse topics. These include: U.S. Mexico relations, the impact of neo-liberal trends in both the urban and rural sector; push/pull factors impacting migration and related Human Rights and Social Justice issues; the tension between diverse identities (ethnic, gender, racial, class) and national identity, among others.

The program places special emphasis on the agency, creativity, entrepreneurship and effectiveness of grassroots efforts to respond to these and other challenges in contemporary Mexican society.

PROGRAM FEATURES

- ◆ Begin with a three-week intensive Spanish course in Session 1 to bring your Spanish skills up to the level necessary to succeed in content courses and internship placement in Sessions 2 and 3.
- ◆ Live with an Oaxacan family where you will be fully immersed in the Spanish language and learn about Oaxaca family structures, societal norms, cultural practices and beliefs.
- ◆ Demonstrate potential for distinctive service in the Oaxacan community by applying to do an internship in a local non-profit organization working on an issue relevant to your academic program or of special interest to you.
- ◆ Participate in the world-famous Oaxacan celebrations of the Day of the Dead October 31-November 2nd.
- ◆ Earn up to 12 credits towards a major or minor in Hispanic Studies in addition to fulfilling Gen Ed and other major/minor requirements.



AT A GLANCE

- ◆ Fall Semester Program
- ◆ 3.0 GPA minimum
- ◆ 4-5 semesters of college level Spanish required
- ◆ 16-17 PLU credits total

CONTACT

Program Director
Dr. Tamara R. Williams
 Professor, Hispanic Studies
 Executive Director, Wang
 Center for Global Education

williatr@plu.edu
 253-535-7678

Site Director Fall 2015
Dr. Josefa Lago Graña
 Distinguished Professor,
 Hispanic Studies Program
 University of Puget Sound

jlago@pugetsound.edu
 (253) 879-3300

Tanya Ulsted
 Study Away Coordinator

ulstedtj@plu.edu
 253-535-7628



PLU IN NORWAY

Fall 2015

August to December

Norway's capital is teeming with active and globally engaged citizens. Home to the Nobel Peace Prize Ceremony, a myriad of organizations devoted to conflict mediation, scenic beauty and outdoor life, Oslo is an ideal setting for deep exploration into the field of peace & conflict resolution. An urban campus, Bjørknes College has young, exciting scholars who are dedicated to the field and teaching.

PROGRAM FOCUS

Conflict Resolution, Global Studies, Political Science

"Norway is among the best places in the world to study peace and conflict resolution as the country is a leader in both international peace building efforts and domestic strategies for conflict mediation. Home to the Peace Research Institute, Nobel Peace Prize Center (and ceremony) and countless other peace-related events and institutions, Oslo offers students a unique opportunity for experiential learning. Oslo was also a perfect location for me to pursue my own academic interest in international development aid, where I was fortunate to meet with leading experts in the field. This, combined with breathtaking scenery, delicious waffles and warm Norwegian hospitality make Oslo a one-of-a-kind study away destination."

—Sonja Ruud

COURSES

The semester is composed of three courses for a total of 16 PLU credits. Courses are taken with Norwegian and International students and are taught in English.

Courses are taught by Faculty of Bjørknes College and experts in the field.

Foreign Policy Analysis (5.33 credits)

This course examines theories of foreign policy and how it is made, focusing in particular on states. Students should gain an insight into the process of making decisions, including the selection of policy instruments, the role of leadership in the process and the importance of history and identity in framing a country's policy goals. They also will consider the relevance of such factors as biases, perceptions, psychology and bureaucratic interests in shaping the decision-making process.

Dr. Christopher White, Bjørknes College

Geopolitics of the Arctic (5.33 credits)

As the region takes on greater economic and strategic importance, the Arctic is in need of an increased prioritization and strong leadership among the Arctic states. This course draws

upon the rich expertise from leading institutions, such as the Fridtjof Nansen Institute (FNI), the Norwegian Institute for Foreign Affairs, the Norwegian Institute for Defense Studies and the University of Oslo. It includes an optional opportunity for the students to travel to the Arctic archipelago of Svalbard.

Dr. Geir Hønneland, Fridtjof Nansen Institute

The Ethics of War and Peace (5.33 credits)

The aim of the course is to gain knowledge of the main ethical concepts we need to know in order to be able to debate the morality of using armed force, and to relate this to the quest for stable, peaceful solutions to armed conflict. We will be debating both the question of when to use armed force (*ius ad bellum*) and how to employ it (*ius in bello*). Since these questions are intimately related to questions about how war can end peacefully, and indeed how war can be avoided overall, we have decided to call the course "The Ethics of War and Peace", even though our focus is on the use of armed force.

Dr. Henrik Syse, PRIO

United States in the Middle East (5.33 credits)

Dr. Hilde Restad, Bjørknes College (American Foreign Policy Expert)

WHY STUDY CONFLICT IN NORWAY?

The country's small size and population belie its large role in international affairs. Norway's involvement in peace mediation in Sudan, and its efforts to create dialogue between traditionally tension-laden groups such as Israelis and Palestinians, and groups in the Balkans are well known.

As a rapidly changing culture and society, Norway is actively engaged in defining and redefining its roles internationally and within its borders. This is a dynamic discussion that includes European integration and the EU, and multiculturalism in Norwegian communities and schools.

The experience in Norwegian culture challenges our perceptions of the "sameness" of Western societies in their cultural and political approaches. Encounters with the perspectives of a small Nordic country and its culture will be part of your experience.

Finally, the college's size and central location offer an interactive and hands-on access to the study of Norwegian approaches to contemporary issues.

PROGRAM FEATURES

- ◆ Bjørknes College courses taught in English with Norwegian and international students
- ◆ Student housing
- ◆ No language required
- ◆ Local bus pass allows exploration of the city and participation in program-related events
- ◆ Students from Bjørknes College study at PLU for one semester as a result of the PLU Gateway Program in Oslo

AT A GLANCE

- ◆ Fall Semester Program
- ◆ 2.7 GPA, 3.0 preferred
- ◆ No previous language required
- ◆ 16 PLU credits

CONTACT

Program Director
Dr. Peter C. Grosvenor
 Associate Professor, Political Science

pcg@plu.edu
 253-535-7399

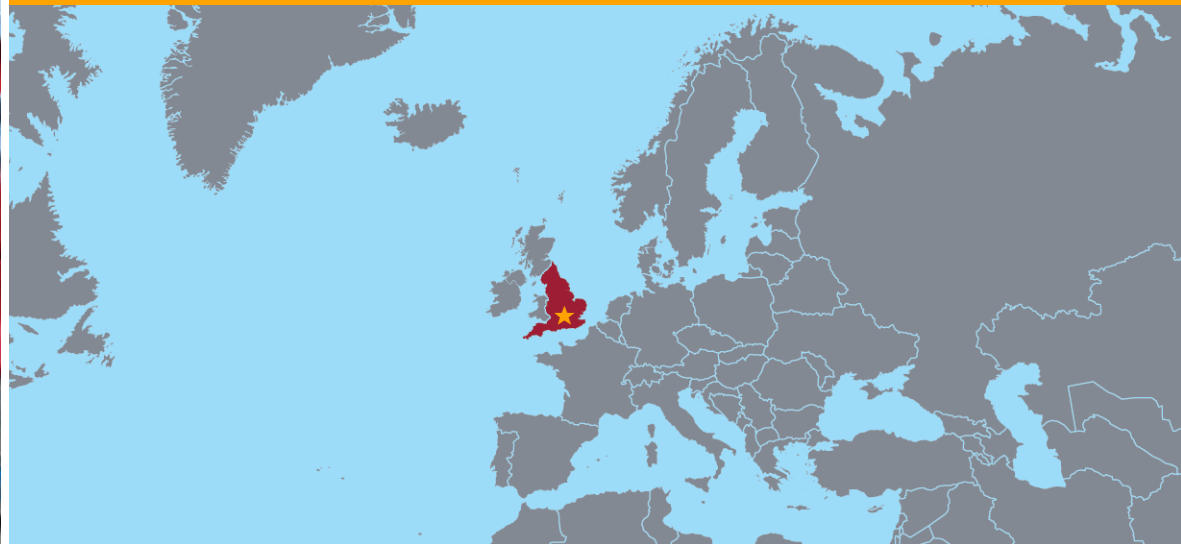
Tanya Ulsted
 Study Away Coordinator

ulstedtj@plu.edu
 253-535-7628





photo Tanya Ulsted



PLU IN ENGLAND

Spring 2016
January to June

Situated in central southern England, Oxford is a city of approximately 165,000 and home to the 39 colleges that constitute the University of Oxford—the oldest English speaking university system in the world, with some colleges dating to the 13th century. The city of Oxford is known not only for its university, but also for its architecture, for the arts, for its rich history, and for its lively pubs. More recently, it has become one of the fastest-growing, and most ethnically diverse, small cities in Britain. This rich and interesting small city is now home to PLU's International Honors program in social justice.

PROGRAM FOCUS

Social Justice from
multidisciplinary perspectives

Students are affiliated with
Regents Park College of the
University of Oxford for the
semester. This provides access to:

- ◆ The Bodleian Library
- ◆ An Oxford Tutor for the self-designed course
- ◆ The dining hall & Junior Common Room

ACADEMICS

Students in the Oxford program:

- ◆ Examine the concept of social justice from a variety of disciplinary perspectives
- ◆ Explore the practical implications of social justice

Classes held at Regents Park College of the University of Oxford include:

- ◆ Required seminars taught by PLU-IHON faculty
- ◆ Individualized tutorials taught by Oxford scholars
- ◆ Visits by local scholars and practitioners affiliated with the University of Oxford

COURSES

Students take a combination of IHON and self-designed courses during the Hilary and Trinity Terms of the Oxford academic year.

IHON 257: The Human Experience (4 credits)

The Common PLU Seminar, taught by PLU faculty during the January Term, is designed to introduce students to foundational issues in social justice from a Humanities perspective.

PHIL 287: Ethics, Law, and Conflict (4 credits)

Special topics course taught by PLU faculty

IHON 258: Self, Culture, and Society (4 credits)

Taught by PLU faculty, this course explores the intersection between philosophy and the social sciences as they unite the ethical and political dimensions of social justice.

Oxford Tutorial (4-8 credits)

Oxford faculty (tutor)

The tutorial orients students in the Oxford model of education where an Oxford professor (tutor) meets individually with 1-2 students to examine a subject of the student's choice over the course of one term. PLU departmental credit may be arranged.

ABOUT OXFORD

The City of Oxford is the site of the oldest English-speaking University, and the 39 colleges that make up Oxford University are considered some of the greatest educational institutions in the world.

Oxford provides:

- ◆ A stimulating, multicultural university environment (one third of its students come from 139 different countries)
- ◆ The largest university library system in Britain, including the Bodleian Library, known locally as “the Bod,” or “Bodley.” It is over 400 years old and is globally acknowledged to be one of the greatest libraries in the world.

Some publications include:

- ◆ A Gutenberg Bible
- ◆ The earliest surviving book written wholly in English
- ◆ Shakespeare’s “First Folio” (1623), containing 36 of his plays
- ◆ A quarter of the world’s original copies of the Magna Carta

PROGRAM FEATURES

- ◆ Housing and meal stipend
- ◆ PLU Site Director
- ◆ Guest lectures from Oxford
- ◆ Dining Hall access allows students to experience the culture of Oxford Universities and meet local students
- ◆ Junior Common Room access, which is a student-led organization for social gatherings

GROUP STUDY TOURS

The PLU Site Director leads excursions to augment the seminar. These may include museums, Parliament, plays and the historic city of Oxford itself.

AT A GLANCE

- ◆ Spring Semester Program with January start
- ◆ Open to IHON students only
- ◆ 3.6 GPA min.
- ◆ 16-20 PLU credits (12 IHON 200-level)
- ◆ Oxford-led tutorials
- ◆ Supplemental Application required, see website for details

CONTACT

Program Director
Dr. Greg Johnson
 Professor, Philosophy

johnsogs@plu.edu
 253-535-8306

Dr. Carmiña Palerm
 Associate Professor, Hispanic Studies
 Director, IHON

palerm@plu.edu
 (253) 535-7756

Tanya Ulsted
 Study Away Coordinator

ulstedtj@plu.edu
 253-535-7628



photo by Emily Steelquist



photo by Jasper Sortun



photo by Jasper Sortun



photo by Haley Ehlers



photo by Bryanna Plog



PLU IN NORWAY

Fall 2015

August to December

Spring 2016

January to June

Full Year 2015-2016

August to June

Telemark is a region of Norway known for its rich cultural tradition and outdoor life. The campus at Bø, a town with a population of 5,000, becomes an active community of students and local residents during the academic year. On the Bø campus, PLU program participants join students from around Norway and the world in this rich setting of cultural and natural heritage to explore relevant issues of cultural identity and expression, sustainability and international business.

PROGRAM FOCUS

Combined with a language study option, Telemark University College (TUC) offers curriculum in English in four disciplines: Scandinavian Studies, Business, Natural Science and Sustainability.

“Nelson Franks, PLU Business major, describes Bø i Telemark as a small and quaint Norwegian town that is uniquely outdoorsy. He was looking for a program in business that would acquaint him with international perspectives and found that the program in Telemark delivered a rich variety of approaches to business.”

—adapted from an interview by Katie Giseburt

ACADEMICS

Courses are taught in Norwegian and English by TUC faculty at the Bø campus. Students enroll in a program track and typically take 3-5 courses each semester.

Scandinavian Studies

Focus: Norwegian Language and Literature, Anthropology, Philosophy, and Sociology

FALL SEMESTER (15-17 CREDITS)

Courses in Norwegian:

- ◆ Norwegian language courses (all three levels)
- ◆ Fantastic Literature

Courses in English:

- ◆ Norway & Telemark: Regional Identity
- ◆ Ecophilosophy
- ◆ Nordic Model (the Welfare State)
- ◆ Scandinavian Film and Fiction
- ◆ Norwegian Perspectives on Outdoor Education

SPRING SEMESTER (15-17 CREDITS)

Courses in Norwegian:

- ◆ Norwegian language courses
- ◆ Norwegian Literature after 1900

Courses in English:

- ◆ Norway & Telemark: Social and Cultural Expressions
- ◆ Viking Age and Medieval Norway & Scandinavia
- ◆ Norwegian Perspectives on Outdoor Education, II
- ◆ Peace Studies

Int'l Tourism & Sustainable Development

Focus: Environmental Studies, Biology, Business, and Norwegian Language

FALL SEMESTER (15-17 CREDITS)

Courses in English:

- ◆ Sustainable Tourism
- ◆ Norway & Telemark: Regional Identity
- ◆ Ecophilosophy
- ◆ International Marketing
- ◆ Alpine Ecology
- ◆ The Entrepreneur and the Society
- ◆ Nordic Model (the Welfare State)

Course in Norwegian:

- ◆ Norwegian language courses

SPRING SEMESTER (15-17 CREDITS)

Courses in English:

- ◆ Interdisciplinary Perspectives of Nature Qualities, Tourism, and Guiding
- ◆ Nordic Model (the Welfare State)
- ◆ The International Business Environment
- ◆ Sustainability Management
- ◆ Norway & Telemark: Social and Cultural Expressions

Courses in Norwegian:

- ◆ Norwegian language courses

Alpine Ecology & Environmental Management

Focus: Environmental Studies, Natural Sciences, and Norwegian Language

FALL SEMESTER (15-17 CREDITS)

Courses in English:

- ◆ Alpine Ecology
- ◆ Alpine Biodiversity and Climatic Change
- ◆ Sustainable Tourism
- ◆ Ecophilosophy

Course in Norwegian:

- ◆ Norwegian language courses

SPRING SEMESTER (15-17 CREDITS)

Courses in English:

- ◆ Conservation Biology
- ◆ Sustainability Management
- ◆ Interdisciplinary Perspectives of Nature Qualities, Tourism, and Guiding
- ◆ Project Assignment

Course in Norwegian:

- ◆ Norwegian language courses

Business

Focus: Marketing, Management, Environmental Studies, and Norwegian Language

FALL SEMESTER (15-17 CREDITS)

Courses in English:

- ◆ International Marketing
- ◆ Norway & Telemark: Regional Identity
- ◆ The Entrepreneur and the Society
- ◆ Sustainable Tourism
- ◆ Nordic Model (the Welfare State)

Course in Norwegian:

- ◆ Norwegian language courses

SPRING SEMESTER (15-17 CREDITS)

Courses in English:

- ◆ The International Business Environment
- ◆ Sustainability Management
- ◆ Norway & Telemark: Social and Cultural Expressions
- ◆ Nordic Model (the Welfare State)

Course in Norwegian:

- ◆ Norwegian language courses

PROGRAM FEATURES

- ◆ Campus housing at Telemark University College
- ◆ TUC clubs and sports
- ◆ International student support and activities
- ◆ Field trips that underscore outdoor life and regional identity
- ◆ Norwegian language not required; offered at all levels

FULL YEAR OPTION

All academic programs at TUC are available for Fall, Spring and the full academic year. Although not required for each program, full year students are encouraged to take Norwegian language.

AT A GLANCE

- ◆ Fall, Spring or year-long program
- ◆ 2.7 GPA, 3.0 preferred
- ◆ No previous language required
- ◆ 15-17 PLU credits per semester

CONTACT

Program Director

Dr. Claudia Berguson

Associate Professor, Norwegian and Scandinavian Area Studies

berguscj@plu.edu
253-535-7512

Tanya Ulsted

Study Away Coordinator

ulstedtj@plu.edu
253-535-7628



photo compliments of Hallie Peterson

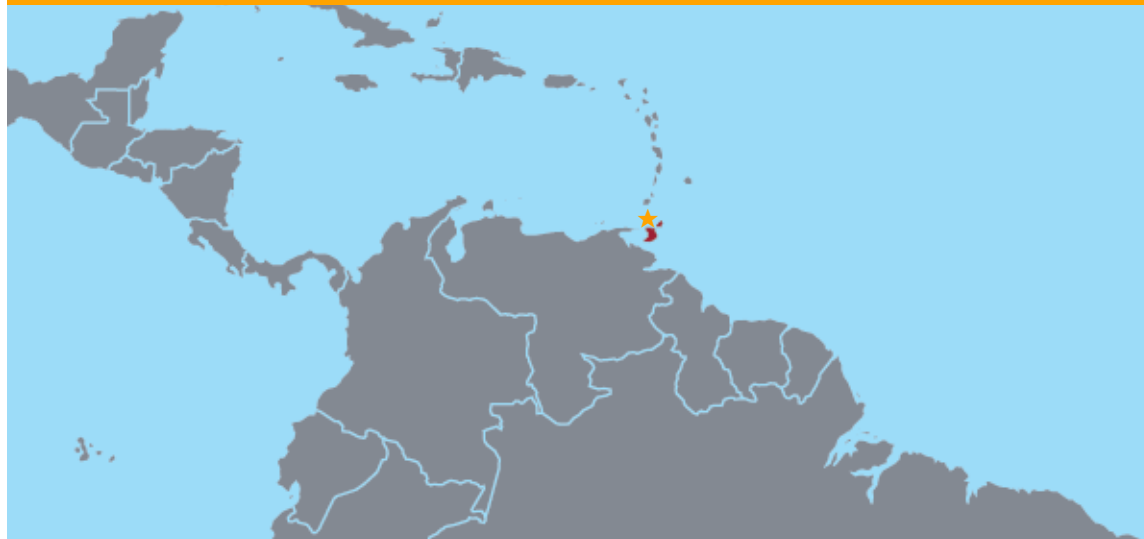
photo compliments of Hallie Peterson

photo compliments of Hallie Peterson



TRINIDAD & TOBAGO

Energy, Environment,
and Cultural Fusion



PLU IN THE CARIBBEAN

Spring 2016
January to May

Immerse yourself in the vibrant, resilient, and colorful society of T&T, an extraordinary twin-island nation at the end of the southern Caribbean's glittering chain. Trinidad's colonial history and its fight for independence has led to challenges and opportunities that now face this modern state:

Oil and gas exploration vie with biodiversity and environmental sustainability; a coherent national identity emerges from racial, ethnic, religious and gender diversity; and popular arts and local forms of cultural expression endure in the face of increasingly dominant global media presence.

Trinidad and Tobago's celebratory culture reveals the strong humanity that seeks to bind its different people's to a shared future where—as their national anthem declares—"every creed and race find an equal place."

PROGRAM FOCUS

Anthropology, Art, Biology, Community Development, Dance, Global Studies, History, Environment, Literature, Music, Religion, Social Work, Women's & Gender Studies

Students take three PLU designed courses taught by local professors, local experts, and US professors as the foundational coursework of the program. The wide range of disciplines offered at the University of West Indies allow students take two courses of their choice based on their academic interests or needs.

A rare study away location, PLU invites non-PLU students, such as St. Lawrence University, to participate in this Gateway program.

COURSES

ENGL 216 (LT – 4 credits)

Caribbean Short Stories

Taught by St. Lawrence University Professor, Eve Stoddard

HIST 350 (SO – 4 credits)

Caribbean Culture & Society

An introduction to the main thematic foci of the program within Trinidad and Tobago's historical context. Course topics and research areas include: energy exploration and economic development, biodiversity and environmental sustainability, race, gender and ethnic relations, parliamentary democracy and democratic processes, the significance of Carnival, and continuity and change in Caribbean music and dance. Taught by University of West Indies Professor of History, Brinsley Samaroo, and two teaching assistants, one cultural and one academic.

University of West Indies (6-8 credits)

Students choose two courses at UWI from a wide range of options.

<http://sta.uwi.edu/onlineForms.asp> under "Faculty booklets"

INTERNSHIP

COOP 477 (4 credits)

International Work Experience

For-credit international internship experience in a non-profit, community, or government organization or a business in Trinidad and Tobago. Placement opportunities in local organizations involved in ecotourism, community organizing, public health, women and gender issues, education, the environment and the arts. Requires a separate application, is supervised by on-site program staff, and requires two-hour a week participation in the Internship Seminar.

GROUP STUDY TOURS

Integral to the culture and society course, group study tours guide students through the cultural, environmental, religious, and artistic diversity that makes up two islands of Trinidad & Tobago. Course lectures and readings come to life as students participate in Trinidad's expressions of the Hindu spring festival of Phagwa, the West African Orisha and Shouter Baptist festivals, the Muslim Hosay commemoration, and the world famous Trinidad Carnival. Students spend a week in rustic beach cabins in the traditional fishing village of Charlotteville, Tobago and explore marine biodiversity sustainability. Students also help clean the beach in anticipation of spending an evening watching large sea turtles at close range as they lumber up the beach to lay their eggs.

PROGRAM FEATURES

- ◆ January course taught by PLU or SLU professor
- ◆ Local support from on-site coordinator
- ◆ Caribbean Lodge and Homestay weekend
- ◆ Internship option
- ◆ No language required (English-speaking nation)

AT A GLANCE

- ◆ Spring Semester Program with January start
- ◆ 2.7 GPA, 3.0 preferred
- ◆ 18 PLU credits total

CONTACT

Program Director
Dr. Barbara Temple-Thurston
 Professor, English

templeba@plu.edu
 253-535-8747

Tanya Ulsted
 Study Away Coordinator

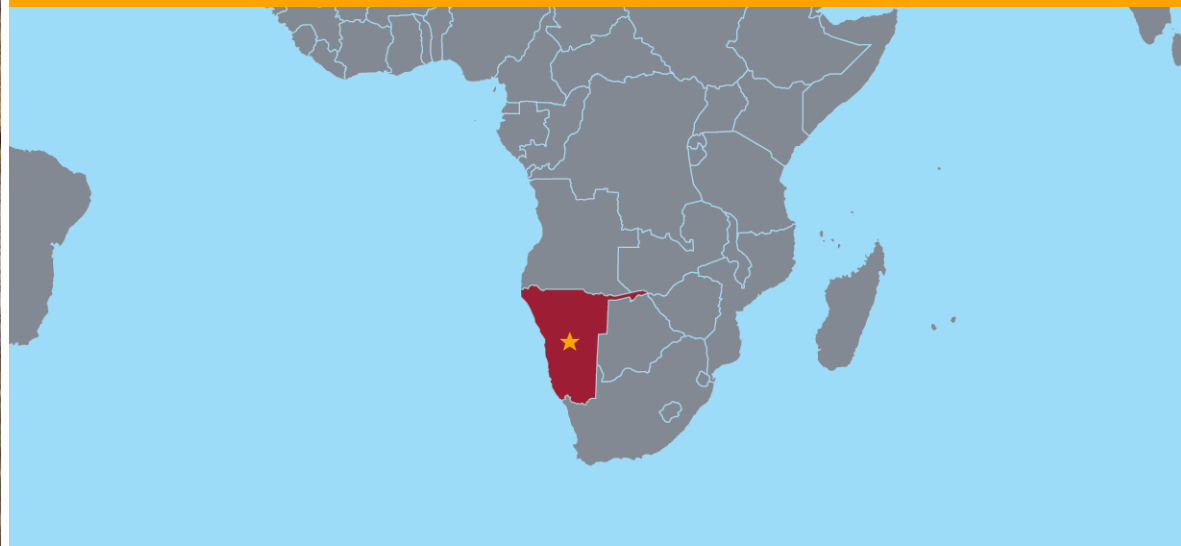
ulstedtj@plu.edu
 253-535-7628



photo by Tamara Williams

photo by Barbara Temple-Thurston





PLU IN NAMIBIA

Spring 2016
January to May

Namibia is located along the southwestern Atlantic coast of Africa, between Angola and South Africa. Although it is the 31st largest country in the world, it is one of the least densely populated with slightly more than two million people living there. The national language is English, though most people's first language is one of at least 13 different regional languages.

This program is based in Windhoek, the capital of Namibia, a modern city of over 340,000 people. This mile-high city is located in the geographical center of the country with mountainous northern and southern borders. The city reflects German colonial influence and the impact of apartheid and South African occupation, as well as the presence of 11 indigenous groups. It is a cosmopolitan city that reflects a rich diversity. Along with the main campus of University of Namibia, Windhoek supports excellent hotels, restaurants, and shops.

PROGRAM FOCUS

Nursing, Education and Natural Sciences

Students take a combination of classes through PLU and the University of Namibia (UNAM) depending on their major.

“Our cultures are different, but they should not separate us. Instead we should educate ourselves and be able to look through the eyes of multiple perspectives. I will take the outlook I have gained in Namibia back to my teaching and relationships at home. This new perspective will allow me to create strong and positive relationships with students, family and workers.”

—Kari Olson, Namibia Participant

ACADEMICS

JANUARY TERM

HIST 389 (4 credits)

Special Topics in Non-West History
This required course provides a historical perspective on Namibia from colonization to democracy.

SPRING SEMESTER

Nursing (12-16 credits)

This program is designed for students in their Junior II semester. Students will enroll in 3-4 courses at UNAM and PLU (online) and participate in an internship experience at one of the two hospitals in Windhoek.

Natural Sciences (12-16 credits)

Students will enroll in 3 Natural Science courses at UNAM. Coursework options include Biology, Chemistry, Environmental Studies, Geoscience and Physics. Students may also elect to complete an internship for credit in one of the subjects listed above or COOP 477: International Work Experience.

Education (16-18 credits)

Required Courses

EDUC 424

Inquiry Into Teaching I: Diverse Learners
Taught by PLU faculty member, includes teaching practicum

SPED 424

Inclusive Education
Hybrid course offered online and in conjunction with UNAM

ELEP 3700

English Language Education
UNAM course

EMSU 3500

Integrated Natural Science and Health Education
UNAM course

Elective Course

ELAP 3620

Arts Education
UNAM course

GROUP STUDY TOURS

Between the J-Term course and the start of the Spring semester, students participate in a 10-day study tour, which includes visits to rural towns in northern Namibia, interaction with those involved in animal conservation, health, and education efforts, and exploration of Namibia's prime national park and game reserve, Etosha. Students will have a two-night homestay with an Ovambo family, the largest ethnic group in Namibia. They will stay in a "Kraal" (homestead compound) and participate in daily life.

At the university's mid-semester, students participate in a second study tour that includes exploring the world's tallest sand dunes in the Namib Naukluft National Park, the seaport town of Swakopmund, and Damara Land, home to unique geographical features and San (Bushman) rock art.

PROGRAM FEATURES

- ◆ PLU faculty member on site to provide instruction and support
- ◆ Housing in new facilities at the University of Namibia
- ◆ Internship option for Natural Sciences
- ◆ Practicum for Education and Nursing majors

AT A GLANCE

- ◆ Spring Semester Program with January start
- ◆ No previous language required
- ◆ 16-22 PLU credits total
- ◆ 2.7 GPA minimum (3.0 preferred for Education)
- ◆ 3.0 GPA minimum for Nursing and Natural Sciences

CONTACT

Program Director

Dr. Jan Weiss

Assistant Professor, Education

weissjm@plu.edu

253-535-7282

Carmen Eyssautier

Study Away Advisor

Namibia Program Manager

eyssaucj@plu.edu

253-535-8178





photo by Hallie Peterson

TAKE THE NEXT STEP

COST

PLU comprehensive fee

(tuition, room & board)

Financial Aid & Scholarships apply

Global Scholar Award eligible

INCLUDES

- ◆ Tuition
- ◆ Room & board
- ◆ Emergency insurance
- ◆ Visa, where applicable
- ◆ Study tours

NOT INCLUDED

- ◆ Roundtrip air travel
- ◆ Personal excursions
- ◆ Books & Supplies

MINIMUM REQUIREMENTS

- ◆ Sophomore standing or above
- ◆ In good standing
- ◆ GPA requirement varies, see program pages

CREDITS

Earn PLU major, minor, Gen Ed and elective credit. Review the online Interactive Equivalency Guide for established semester study away equivalencies:

www.plu.edu/registrar/Equivalency-Guides/interactive

EXPLORE

STEP 1

PLU offers a wide range of study away options that meet the needs of students in all academic disciplines. Challenge yourself to live and learn outside of your comfort zone for a semester or year. Discover your options:

- ◆ Attend a Study Away 101 Session
- ◆ Browse programs on the Wang Center website
- ◆ Attend the Study Away Fair

EVALUATE

STEP 2

Narrow your options by considering:

- ◆ Fit with academic program & location
- ◆ Fit with personal and professional goals
- ◆ Availability of service learning and internship opportunities

Utilize campus resources:

- ◆ Meet with a Study Away Advisor
- ◆ Meet the Gateway Program Director
- ◆ Discuss your plans with your Academic Advisor
- ◆ Complete your FAFSA (financial aid, gift aid & scholarships apply toward program costs)

APPLY

STEP 3

SEMESTER STUDY AWAY APPLICATION

The Gateway application includes short essays, one faculty and one professional recommendation, and a \$50 application fee.

GLOBAL SCHOLAR AWARD

This PLU need-based award can cover out-of-pocket expenses up to \$2,500.

APPLICATION DEADLINE

March 13, 2015

Applications available on the Wang Center website in January. www.plu.edu/wangcenter

PREPARE

STEP 4

In addition to independent research about your destination, the Wang Center provides orientations for health and safety, logistics, and cultural preparation. The Gateway Programs and their PLU Faculty Program Directors also provide program-specific orientations to prepare you for the cultural and academic experience in your host learning community.

- ◆ Participate in an on-going exercise focused on your academic, professional and personal goals.
- ◆ Participate in the Wang Center's *carbon consciousness* program. PLU recognizes the privilege of study away and has committed to mitigate your air travel carbon footprint through sustainable *onsetting* projects.
- ◆ Reach out to the Wang Center and Gateway Program Directors as needed. They are prepared to support you in case of an emergency.

STEP 6

REFLECT

Reflect, clarify and integrate your experiences into your PLU career and beyond.

Wang Center Returner Reflection Series help you process and make meaning of your experiences as you consider ways to integrate your study away experience with your academic, professional and personal goals.

Wang Center Sojourner Advocate student leadership positions help to advance the vision of Global Education at PLU. Applications are accepted each March for the following academic year.

Wang Center Research Grants provide funding for an international independent research project. Applications for 2015-2016 Wang Center Research Grants are due March 31, 2015.

Center for Community Engagement & Service and Career Connections staff provide you with support and resources to identify opportunities to serve or intern in the local community, or guide you through the post-PLU career search process. They can also provide more information about:

- ◆ Peace Corps
- ◆ Fulbright
- ◆ Graduate School
- ◆ Post-Graduate Volunteer or Teach Abroad Programs

UPCOMING PROGRAMS

LOCAL GATEWAY PROGRAM

At PLU we refer to study away rather than study abroad because we are committed to providing students with learning opportunities both globally and locally. The tradition of off-campus study away within the US, and even within Tacoma, has existed at PLU for many years in the form of J-Term courses, but will soon be expanded with the upcoming launch of a semester-long program in Tacoma. Keep your eye out this year for more information about this new local Gateway program focusing on issues of diversity, justice and sustainability in the Puget Sound Community.

CONSERVATION BIOLOGY AND SUSTAINABLE DEVELOPMENT IN OAXACA, MEXICO

Watch for a Biology and Environmental Studies option in Oaxaca, Mexico geared toward students in the Natural Sciences who may have lower levels of Spanish than the immersion program requires. Students will take Spanish, Biology and conduct an internship.

INTEGRATED EXPERIENCE

"I studied abroad in Oaxaca, Mexico for a semester during the fall of my junior year, and, while there, I had the privilege of doing an internship at a small NGO called Institute of Nature and Society of Oaxaca (INSO). INSO looks for ways to better approach the water crisis in Oaxaca through collaborating with the local communities to come up with solutions that will best address the problems they experience with respect to water availability, purity, and distribution. My continued education in Biology and Hispanic Studies made it possible to take an interdisciplinary approach towards my understanding of water related issues, both at the local and the global level. I presented my Hispanic Studies capstone entitled "Narrative Representations of the Oaxacan Water Crisis." The water theme also worked its way into my biology capstone, which is an investigation of the genetic regulation of flood and drought tolerance in crops. Additionally, my decision to study agricultural sciences in graduate school has largely been informed by my research experiences in Mexico. I hope to direct my passion for science towards promoting sustainable agriculture and food security, and would love to at some point work with migrant farmworkers in the U.S."

— Seanna Hewitt '14
PhD student
Plant Molecular Biology
Washington State University

**WANG
CENTER**
FOR GLOBAL
EDUCATION

STUDY AWAY
PROGRAMS

ALIGNED with PLU mission

INTEGRATED with curriculum & university systems

RESPONSIVE to academic, professional & personal goals and needs

ACCESSIBLE to students of all financial backgrounds

SUSTAINABLE travel through educational carbon mitigation practices



WANG CENTER FOR GLOBAL EDUCATION

12180 PARK AVENUE SOUTH

TACOMA, WA 98447-0003

253-535-7577

www.plu.edu/wangcenter