

OSPI Resources for School Nurses

Katie Johnson, MN, RN-BC, NCSN
Interim Health Services Supervisor, OSPI
Introduction to School Nursing - Pacific Lutheran University
October 20, 2012

•


Objectives

- Understand the foundational relationship between Revised Code of Washington (RCW); Washington Administrative Code (WAC); agency guidance; and school nursing practice.
- Describe the resources available on the OSPI Health Services website
- Understand how to use RCWs, WACs, DOH and OSPI Health Services resources to guide safe and legal school nursing practice


© Katie Johnson, MN, RN-BC, NCSN - OSPI #2

School Nurses Bridge the Gap Between Health & Education

• • •



© Katie Johnson, MN, RN-BC, NCSN - OSPI #3



The Chain of Command

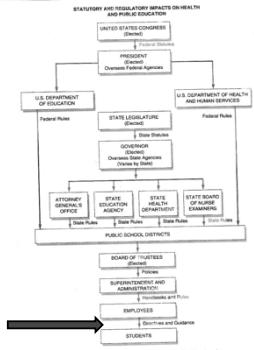



Figure 13.1.8. © Statutory and regulatory impacts on health and public education. Reproduced with permission of the American Lung Association. <http://www.atsj.org>

Katie Johnson, MN, RN-BC, NCSN - OSPI # 4



Washington State

Katie Johnson, MN, RN-BC, NCSN - OSPI # 5

RCWs

The Revised Code of Washington

- Compilation of all permanent laws currently in force
 - o Session Laws
 - Enacted by the Legislature & signed by the Governor
 - Enacted via the initiative process
 - o Structure
 - Amendments included
 - Repealed laws not included
 - Temporary laws such as appropriations acts not included
 - o Located at <http://apps.leg.wa.gov/rw/>

Katie Johnson, MN, RN-BC, NCSN - OSPI # 6

WACs

Washington Administrative Code

- Regulations of executive branch agencies
 - Issued by authority of statutes
 - A source of primary law in Washington State
 - Similar to legislation and the Constitution
 - Codifies regulations
 - <http://apps.leg.wa.gov/wac/>

© Katie Johnson, MN, RN-BC, NCSN - OSPI

•7

Administrative Agencies

Health Law

- RCW
 - RCW 18.79 Nursing Care
 - RCW 70 Public Health & Safety
- WAC
 - WAC 246 Department of Health
 - WAC 296 Labor & Industries (BBP)
- Department of Health
 - Nursing Care Quality Assurance Commission

Education Law

- RCW
 - RCW 28A Common School Provisions
- WAC
 - WAC 392 Public Instruction
 - WAC 181-79A Teacher Standards
- Office of the Superintendent of Public Instruction (OSPI)
 - Student Support
 - Health Services

© Katie Johnson, MN, RN-BC, NCSN - OSPI

•8

Health Practice Requirements

- Nurse Practice Act – Chapter 18.79 RCW
 - <http://apps.leg.wa.gov/RCW/default.aspx?cite=18.79>
 - Functions of a registered nurse and licensed practical nurse
 - <http://apps.leg.wa.gov/WAC/default.aspx?cite=246-840-705>
- Nursing Commission
 - <http://www.doh.wa.gov/LicensesPermitsandCertificates/NursingCommission.aspx>
 - Laws related to nursing
 - <http://www.doh.wa.gov/LicensesPermitsandCertificates/NursingCommission/Laws.aspx>

© Katie Johnson, MN, RN-BC, NCSN - OSPI

•9

Health Law

- Department of Health Title 246 WAC
 - <http://apps.leg.wa.gov/wac/default.aspx?cite=246>
 - Communicable Diseases (notifiable conditions; immunizations; contagious disease)
 - Parent / Child Health (Auditory and vision; standards)
 - Professional Standards and Licensing
- Immunization Chapter 246-105 WAC
 - <http://apps.leg.wa.gov/WAC/default.aspx?cite=246-105&full=true>
- Public Health & Safety Title 70 RCW
 - <http://apps.leg.wa.gov/rcw/default.aspx?Cite=70>
 - Medical Records
 - <http://apps.leg.wa.gov/rcw/default.aspx?cite=70.02>
- Children with Special Health Care Needs Chapter 246-71- WAC Coordinated Children's Services
 - <http://apps.leg.wa.gov/wac/default.aspx?cite=246-710>

Health Practice con't

- Nursing Commission con't
 - School Nursing Info
 - Staff Model for Delivery of School Health Services
 - <http://www.doh.wa.gov/Portals/1/Documents/6000/StaffModel.pdf>
 - Field Trips and Medication Administration
 - <http://www.doh.wa.gov/Portals/1/Documents/6000/FieldTripsMed.pdf>
 - Asthma Management in School Settings
 - <http://www.doh.wa.gov/Portals/1/Documents/6000/AsthmaMgmt.pdf>
 - Scope of Practice Decision Tree
 - <http://www.doh.wa.gov/Portals/1/Documents/Pubs/609305.pdf>

Education Practice Requirements

- ESA Certification **Chapter 181-79A WAC**
 - **181-79A-223** Academic and experience requirements for certification -- School nurse, school occupational therapist, school physical therapist, school speech-language pathologist or audiologist, or school social worker.
 - **181-79A-226** Issues of abuse course work requirement for continuing or professional certification -- Educational staff associate
 - <http://apps.leg.wa.gov/wac/default.aspx?cite=181-79A>

Education Law

- Education Law – Title 28A RCW Common School Provisions
 - <http://apps.leg.wa.gov/rcw/default.aspx?cite=28A>
 - Chapter 28A.225 RCW
 - <http://apps.leg.wa.gov/RCW/default.aspx?cite=28A.225>
- Health – screening and requirements Chapter 28A.210 RCW
 - <http://apps.leg.wa.gov/rcw/default.aspx?cite=28A.210>
- Rules for Special Education
 - <http://apps.leg.wa.gov/WAC/default.aspx?cite=392-172A>
 - WAC 392-172A – 01155 Related Services (definition)
 - FAPE
 - Personnel Qualifications **WAC 392-172A-02090**
 - <http://apps.leg.wa.gov/WAC/default.aspx?cite=392-172A-02090>

• Katie Johnson, MN, RN-BC, NCSN - OSPI

• 13

OSPI Website

Office of the Superintendent of Public Instruction

- Randy Dorn - Superintendent
- Student Support / Health Services
- Mission – “Health Services provides consultation to school nurses, administrators, staff, families, and students in order to reduce barriers to learning and better assure a safe and healthy school environment.”
- Google “OSPI Health Services”
 - <http://www.k12.wa.us/HealthServices/default.aspx>

• Katie Johnson, MN, RN-BC, NCSN - OSPI

• 14

Resources at OSPI



- Partner Links
- Health Topics A – Z
- School Nurse Corps
- Home / Hospital Instruction
- Free and Appropriate Public Education
- Health Services Assessment Tools

• Katie Johnson, MN, RN-BC, NCSN - OSPI

• 15

OSPI Education Partners

- Coordinated School Health
- Health and Fitness Education
- Navigation 101
- Center for the Improvement of Student Learning
- Readiness to Learn
- School Safety Center
- Homeless Education
- Special Education

© Katie Johnson, MN, RN-BC, NCSN - OSPI

© 16

DOH Partners

- Washington State Department of Health
 - Nursing Commission
 - Immunization Program
 - Emergency Medical Services and Trauma
 - Injury and Violence Prevention
 - Maternal Child Health
 - Environmental Health and Safety

© Katie Johnson, MN, RN-BC, NCSN - OSPI

© 17

State Partners

- Washington State Board of Health
- Center for Children with Special Needs (SCH)
- Action for Healthy Kids
- Department of Social and Health Services (DSHS) Children's Administration (Health Insurance)
- Washington State Department of Early Learning
- Centers for Disease Control and Prevention
 - Division of Adolescent and Student Health (DASH)

© Katie Johnson, MN, RN-BC, NCSN - OSPI

© 18

Professional Organizations

- School Nurse Organization of Washington (SNOW)
- National Association of School Nurses (NASN)
- National Association of State School Nurse Consultants (NASSNC)
- American School Health Association (ASHA)
- American Nurses Association (ANA)
- American Academy of Pediatrics (AAP)
- Washington Interscholastic Activities Association (WIAA)

© Katie Johnson, MN, RN-BC, NCSN - OSPI

© 19



School Nursing Practice

© Katie Johnson, MN, RN-BC, NCSN - OSPI

© 20

Documentation

- RCW 246L.840.700 Standards of Nursing Practice - RN & LPN
 - Shall communicate significant changes in the client's status to appropriate members of the health care team.
 - In a timely manner
 - Shall document, on essential client records, the nursing care given and the client's response to that care
- RCW 70.02 Medical Records
 - <http://apps.leg.wa.gov/rcw/default.aspx?cite=70.02>

© Katie Johnson, MN, RN-BC, NCSN - OSPI

© 21

Documentation Privacy

- FERPA governs the privacy of student information
 - Health records become education records when transferred to school.
- Covers Personally Identifiable Information
- Applies to all agencies that receive federal funds
- Must have written permission to disclose

Katie Johnson, MN, RN-BC, NCSN - OSPI # 22

FERPA

- Exceptions:
 - Legitimate educational interest
 - Transferring schools
 - Audit/evaluation
 - Judicial order
 - Health & safety emergency
 - <http://www2.ed.gov/policy/gen/guid/fpco/ferpa/index.html>
- Resource: Guidelines for Handling Health Care Information in School Records

Katie Johnson, MN, RN-BC, NCSN - OSPI # 23

Standardized Documentation Codes

- School Nurse Corps
 - ESD 123 Website
 - School Health Forms & Documents
- Address
 - Chronic Health Conditions
 - Health Room
 - Reason for Visit
 - Intervention
 - Disposition
 - Absence Reason

• Johnson, K. H., & Berggren, M. D. (2011). Meaningful use of school health data. *The Journal of School Nursing, 27* 102-110. doi:10.1177/1059840510391095
 • Johnson, K. H., Berggren, M. D., Westbrook, L.O. (2012). The promise of standardized data collection: School health variables identified by states. *The Journal of School Nursing, 28* (2) 95-107 doi:10.1177/1059840511426434
 • Johnson, K. H., & Guthrie, S. (2012). Harnessing the power of student health data: Selecting, using, and implementing electronic school health documentation systems. *NASN School Nurse, 27*(1), 27-38.

Katie Johnson, MN, RN-BC, NCSN - OSPI # 24

JLARC Survey of SN '97

Joint Legislative Audit Review Committee

- Examined school nursing resources and student needs
- District level control of staffing
- School nurse is ESA-RN
- OSPI requires that "school nurse" in Class I districts is ESA-RN; Class II districts not subject to this rule
- 296 Districts; 71% response rate
- FTE RN: Students = 1:1713
- ESA-RN Funding under Instruction Support
 - Classified RN not tracked

• Katie Johnson, MN, RN-BC, NCSN - OSPI

• 25

JLARC Findings

Staffing Pattern	State	Class I	Class II
Access to RN	94.7%	99.1%	65.1%
No Certificated RN access	12.0%	3.5%	67.8%
Classified RN only	6.5%	2.6%	32.9%
Students with no RN access	5.3%	0.9%	34.9%
LPN only	1.5%	0.4%	8.7%
No RN on staff	3.8%	0.5%	26.2%

Measures by Student Population (JLARC p. 6-7)

• Katie Johnson, MN, RN-BC, NCSN - OSPI

• 26

School Nurse Corps (SNC)

ESD School Nurse Corps Nurse Administrators

- Located at each ESD
- Administer the School Nurse Corps program in their individual ESD region.
 - Help hire and assign SNC school nurses to neediest districts
 - Training, orientation and supervision of SNC nurses.
- Provide ESD-wide school health services consultation.
- Consultation and technical assistance re: school health
- Organize and/or provide training as needed.
 - <http://www.k12.wa.us/HealthServices/SchoolNurse.aspx>

• Katie Johnson, MN, RN-BC, NCSN - OSPI

• 27

SNC Resources

- School Health Services Guidebook – ESD 105
 - http://www.esd105.org/images/stories/School_Health_Services_Manual_Revised_2011.pdf
- School Nurse Resource Guide – ESD 189
 - <https://library.nwesd.org/snc/school-nurse-resource-guide>
- Reference Books / Videos – ESD 113
 - <http://www.esd113.org/Page/1100>
 - <http://www.esd113.org/Page/1109?>
- Coding Documents - ESD 123
 - <http://esd123.org/hdocsarticle>

© Katie Johnson, MN, RN-BC, NCSN - OSPI

© 28

Staff Model

- Combines health and education law; RCW & WACS referenced.
- Grew out of JLARC study of 1997 re: access of students to an RN – especially ESA RN
- Describes nursing assessment
- Nursing preparation (ESA RN; RN; LPN)
- Delegation issues
- Section 504
- Confidentiality
- Transportation considerations

© Katie Johnson, MN, RN-BC, NCSN - OSPI

© 29

Staff Model

- Recommended Staffing
 - **ESA Certificated School Nurses** – responsible for 1500 student caseload; determining acuity level; delegating care to RNs, LPNs, UAPs; training and supervision of staff; SpEd evaluations; IHPs and health 504 plans; health education; surveillance of health and safety of building; immunization monitoring; caseload management; care coordination.
 - **RNs & LPNs** – Based on student severity coding. LPNs need supervision by RN, MD or LHCP
 - **Health Room Asst** – special training to assist in health room; supervised by RN; especially staffing for high use time. Elementary 0.1 FTE/100 students; Secondary 0.1 FTE/200 students. Needs weekly face-to-face time with RN
 - **Clerical Staff** – clerical duties; data entry; managing health forms & immunizations

© Katie Johnson, MN, RN-BC, NCSN - OSPI

© 30

Severity Coding

- Used to describe the acuity of the nurse's caseload
- **Level A** – Nursing Dependent 24 hour/day 1:1 nurse. Requires continuous nursing assessment to prevent irreversible damage or death
- **Level B** - Medically Fragile – daily possibility of life threatening emergency. Full time nurse in building
- **Level C** – Medically Complex – Complex/unstable physical/social-emotional condition requiring daily treatment/close monitoring. RN 1 day/week and available daily.
- **Level D** – Health Concerns – uncomplicated, predictable condition. Occasional monitoring. RN 1 time/year.

© Katie Johnson, MN, RN-BC, NCSN - OSPI

© 31

Condition Severity

- Is the result of RN assessment
- Reflects the student needs (NOT district staffing resources)
- Reflects Social/Emotional Factors and comorbidity that influence student needs
- Comorbid factors may include
 - Chronic illness/ stressors / homeless
 - Drug/alcohol / poverty/ low income
 - English-as-second language
 - High mobility/Special education
- <http://www.k12.wa.us/HealthServices/pubdocs/SchHealth.pdf>

© Katie Johnson, MN, RN-BC, NCSN - OSPI

© 32

Assessment Tools

- Annual District Assessment (DA) of District Student Health Services
 - Completed at district level & aggregated at ESD level
 - May require input from building nurse
 - Describes
 - Staffing
 - Student Needs
 - Supports risk management
- Parent Survey (English & Spanish)
- Staff Survey

© Katie Johnson, MN, RN-BC, NCSN - OSPI

© 33

Annual District Assessment

Medications	Treatments	Referrals	
		Vision	Hearing

SECTION 1 - STUDENT DATA
 Indicate the number of responses in each category listed below.

Chronic Health Conditions	Adverse Cases	Life-Threatening per Law 132W 200A 23.020	Number of ECPs		Number of staff	
			Complete	Incomplete	Complete	Incomplete
1. Allergies						
2. Allergic reactions						
3. Asthma						
4. Cardiac						
5. Diabetes Mellitus						
6. Diabetes - Non-IDM						
7. Gastrointestinal						
8. Hematological						
9. Oncological						
10. Psychiatric						
11. Psychotropic - Non-A/D						
12. Psychotropic - A/D						
13. Seizure						
14. Urinary						
15. Immunizing Status						
16. Other: _____						

2. Indicate the number of students in each severity level as described in the Staff Model:

Level A: Nursing Dependent _____

Level B: Mobility Fragile _____

Level C: Mobility Complex _____

Level D: Health Concerns _____

Summary of school health needs and resources

Katie Johnson, MN, RN-BC, NCSN - OSPI



Practice Issues

Katie Johnson, MN, RN-BC, NCSN - OSPI

Medications

- RCW 18.79.260 Registered Nurse
- Under the general direction of a licensed physician and surgeon, dentist, osteopathic physician and surgeon, naturopathic physician, optometrist, podiatric physician and surgeon, physician assistant, osteopathic physician assistant, or advanced registered nurse practitioner
- Administer medications, treatments, tests, and inoculations including:
 - o Severing or penetrating of tissues
 - o Independent judgment and skill

Katie Johnson, MN, RN-BC, NCSN - OSPI

Medications

- RCW 28A.210.260 Administration of Oral Medications amended by HB 2247 to include eye, ear and topicals
- OSPI Bulletin 34-01 (update in process) <http://www.k12.wa.us/HealthServices/pubdocs/b034-01.pdf>
- Requirements:
 - Written, current, unexpired request from parent
 - Written current, unexpired request from LHCP within their scope of practice
 - Valid reason to administer during school hours
 - If required more than 15 days, must have written instructions
 - Original container; properly labeled
 - RN or ARNP to train and supervise delegation

OSPI Bulletin 34-01 Medications

- | | |
|---|---|
| ○ Documentation | ○ Describes reporting of errors |
| ○ Prescribed or OTC | ○ Describes provisions for field trips |
| ○ Includes inhaled medications | ○ Describes provision for disaster planning |
| ○ Allows for self administration | ○ Valid for the current school year |
| ○ Describes procedures for receipt and counting | ○ Provisions for immunity from liability |
| ○ Describes valid prescribers | ○ Discontinue orally or in writing |
| ○ Describes security of controlled medications | |

Delegation

"3) A **registered nurse** may delegate tasks of nursing care to other individuals where the registered nurse determines that it is in the best interest of the patient.

(a) The delegating nurse shall:

- (i) Determine the competency of the individual to perform the tasks;
- (ii) Evaluate the appropriateness of the delegation;
- (iii) Supervise the actions of the person performing the delegated task; and
- (iv) Delegate only those tasks that are within the registered nurse's scope of practice.

Delegation

- RCW 18.79.260
- The following may not be delegated
 - Acts requiring substantial skill
 - Piercing or severing of tissues
 - Acts that require nursing judgment
- Nurses cannot be coerced to delegate

© Katie Johnson, MN, RN-BC, NCSN - OSPI

© 40

Scope of Practice Decision Tree

- Describes RN Scope of Practice
 - Assessment, nursing diagnosis, setting goals, planning care strategies, implementing care, delegating care to qualified others, supervising, evaluating, teaching, managing care, maintaining client safety, collaborating with other health care members.
- Guides decision on interventions within scope – including delegation
 - <http://www.doh.wa.gov/Portals/1/Documents/Pubs/609305.pdf>

© Katie Johnson, MN, RN-BC, NCSN - OSPI

© 41

Immunization

- RCW 28A.210 (060; 070; 080; 090; 100; 110; 120; 130; 140; 150; 160; 170) Immunization Program Purpose; definitions; Administrator duties; verifications; rules.
 - <http://apps.leg.wa.gov/RCW/default.aspx?cite=28A.210>
 - Attendance at school is conditioned on proof of immunization; conditional compliance; or exemption.
- WAC 246-105 Immunization against vaccine-preventable diseases requirements; documentation; duties of schools.
 - <http://apps.leg.wa.gov/WAC/default.aspx?cite=246-105>
- WAC 392-380 Administrators exclude for non-compliance; Notice required
 - <http://apps.leg.wa.gov/WAC/default.aspx?cite=392-380&full=true>

© Katie Johnson, MN, RN-BC, NCSN - OSPI

© 42

Immunization Resources

- DOH Immunization Manual
http://www.doh.wa.gov/Portals/1/Documents/Pubs/348-124_ImmunizationSchoolManual.pdf
- DoH Immunization Maps
<http://www.doh.wa.gov/DataandStatisticalReports/SchoolImmunization/DataReports.aspx>

School Requirements

Health VACCINES REQUIRED FOR SCHOOL ATTENDANCE, GRADES K-12
July 1, 2012 - June 30, 2013

VACCINE	Kindergarten-1 st Grade	2 nd -4 th Grade	5 th -6 th Grade	7 th -12 th Grade
Hepatitis B	3 doses			
Diphtheria, Tetanus, and Pertussis (DTaP/DTaP-IPV)	5 doses (3 doses if 4 th dose given 1 st birthday) plus 3 dose Tdap required for 6 th -12 th grade if 11 years old			
Polio (IPV or OPV)	4 doses (3 doses if 4 th dose given 1 st birthday) * The 4 th dose must be given on or after August 1, 2009 and be given at a minimum 6-month interval from the previous dose.	4 doses (3 doses if 4 th dose given 1 st birthday)		
Mumps, Measles, and Rubella	2 doses			
Varicella	2 doses all	1 dose all	1 dose all	Recommended, but not required

Look at the minimum age and interval table on page 2 for recommended minimum age and spacing information.

<http://www.doh.wa.gov/CommunityandEnvironment/Schools/Immunization/VaccineRequirements.aspx>

Immunization Compliance

- WAC 392-380-045 requires schools to check students' immunization status and prohibit attendance if the student has failed to produce proof of immunization.
- Student's immunization status falls into one of four categories
 - o **Complete** - Signed CIS and is fully immunized according to minimum requirements for age or grade.
 - o **Exempt** - Signed CIS and Certificate of Exemption (CoE) signed by parent/guardian or LHCP to excuse from a vaccine or from the full required dosage of a vaccine. All exempted vaccines must be listed on the CoE.
 - o **Conditional**. Temporary status - incomplete. Signed CIS; can attend if satisfactory progress toward full immunization.
 - o **Out of Compliance**. This status means the child has no signed CIS or has a signed CIS but also does not have any other status.

Immunization Conditional Status

- Missing one or more required immunizations
- Allowed to attend on a temporary basis, no more than 30 days to allow student to catch up
 - Missing a required immunization(s) on first day of school
 - Additional vaccines needed to complete a vaccine series
 - become conditional after the next dose is due until the series is completed.
 - Expired temporary medical
- Need to notify parents/guardians re: conditional status and measures to address

© Katie Johnson, MN, RN-BC, NCSN - OSPI

© 46

Immunization Out of Compliance

- Missing immunizations not obtained within described timeframes are out-of-compliance
<http://www.doh.wa.gov/cfh/immunize/schools/vaccine.htm>
- WAC 392-380-045 requires that the chief administrator of each public school prohibit the further presence of the student at school who has failed to provide proof of immunization in accordance with RCW 28A.210.080 .
- WAC 392-380-050 describes written notice required prior to exclusion

© Katie Johnson, MN, RN-BC, NCSN - OSPI

© 47

Life Threatening Conditions

- WAC 392-380- 045
- Attendance conditioned on presentation of
 - Medication or treatment order
 - Nursing plan to implement order
 - Medication provided by parent to carry out the order
- Exclusion by written notice; with provisions for hearing if a dispute

© Katie Johnson, MN, RN-BC, NCSN - OSPI

© 48

Anaphylaxis (Allergies)

- Anaphylaxis – Policy Guidelines – Procedures – Reports
RCW 28A.210.380.
 - Prevention
 - Care
 - Procedure to treat anaphylaxis
 - Content for training for school personnel
 - Communication plan
 - Strategies to reduce risk
- Life Threatening Health Conditions
 - RCW 28A.219.320; WAC 392-380-005-080; OSPI Bulletin B061-02
- Provisions to self carry
 - RCW 28A.210.380
- Special Dietary Needs USDA Regulations
 - multiple sections

Katie Johnson, MN, RN-BC, NCSN - OSPI # 49

Anaphylaxis (Allergies)

- OSPI Anaphylaxis Guidelines
 - <http://www.k12.wa.us/HealthServices/Publications/09-0009.aspx>
- Plan developed by school nurse in cooperation with family; care provider; & school staff.
- Responsibility under federal law (Section 504; IDEA)
- Epinephrine as treatment of choice
- Adult supervision mandatory
 - by trained staff
- Annual medication or treatment orders
- Annual training and supervision
 - Student specific for those with direct supervision – annual practice
 - Awareness for all staff

Katie Johnson, MN, RN-BC, NCSN - OSPI # 50

Anaphylaxis (Allergies)

Anaphylaxis Guidelines con't

- Emergency Care Plan
 - Completed prior to student attending school
 - Training and supervision by school nurse
 - Annual review
 - May be a 504 Plan
 - Current picture of student
- Communication plan
 - Consider Coordinated School Health – roles & responsibilities
 - EMS Response
 - Substitute teacher training
- Parents provide supplies and orders; notify re: changes
 - Consider McKinney-Vento Homeless Act
- Protection from bullying

Katie Johnson, MN, RN-BC, NCSN - OSPI # 51

Type I Diabetes

- RCW 28A.210.330 Students with Diabetes
- Requires Individual health plans including
 - Parent requests
 - LHCP orders
 - Storage of medical equipment provided by parents
 - Provisions for testing & treating blood sugar
 - Accommodations for eating
 - Scheduling information
 - Care by Parent Designated Adults
 - Consultation with RN or ARNP for coordination, training & supervision

© Katie Johnson, MN, RN-BC, NCSN - OSPI

© 52

Type I Diabetes

- Guidelines for Care of Students with Diabetes
- <http://www.k12.wa.us/HealthServices/pubdocs/diabetes/GuidelinesStudentswithDiabetes.pdf>
- Details of implementation of RCW 28A.210.330
- Overview of Diabetes management (insulin; testing; recommended supplies; S/S of hypo/hyperglycemia; meal planning; exercise)
- Staff guidelines for school management (Table of permissible activities)
- Suggested accommodations
- Practical parental concerns
- Many sample forms

© Katie Johnson, MN, RN-BC, NCSN - OSPI

© 53

More Diabetes Resources

- OSPI Bulletin 61-02 Life Threatening Conditions & Diabetes
 - Sample Policy
- Curriculum Standards for PDAs

© Katie Johnson, MN, RN-BC, NCSN - OSPI

© 54

Asthma

- **RCW 28A.210.370**
- Uniform policy for training of school staff
- Policies for rescue
- Provisions for self – administration
 - HCP approval and orders
 - RN at school approval
 - Written treatment plan for care at school
 - Proper use demonstrated
- Provisions for all school activities
- Provisions for backup medication

Katie Johnson, MN, RN-BC, NCSN - OSPI

55

Asthma

- Uniform Staff Training Policy – Students with Asthma
 - <http://www.k12.wa.us/HealthServices/pubdocs/UniformStaffTrainingAsthmaPolicyDOH-FINAL08-27-08.pdf>
- Licensed professional designated to provide inservice training on asthma
 - Elements
 - Symptoms; Treatment; Monitoring
 - Levels
 - General – all school staff
 - Intensive – staff directly involved with affected student
- Use of AMES Manual – Asthma Management in Educational Settings
- Annually
- ***Prior to first day of school***

Katie Johnson, MN, RN-BC, NCSN - OSPI

56

Vision & Hearing

(Auditory & Visual Standards)

- WAC 246-760
- Screening for vision and hearing deficits that retard students' studies
- Required for
 - Grades K; 1; 2; 3; 5; 7
 - Referrals by teachers, parents, staff
 - Other students annually if resources available
- Screening standards defined
- Rescreening within 6 weeks if deficit noted
- Referral provisions defined
- Qualifications defined

Katie Johnson, MN, RN-BC, NCSN - OSPI

57

Medical Marijuana

RCW 69.51A.060

- (1) It shall be a misdemeanor to use or display medical marijuana in a manner or place which is open to the view of the general public.
- (4) Nothing in this chapter requires any accommodation of any on-site medical use of marijuana ...in **any school bus or on any school grounds, in any youth center...** or smoking medical marijuana in any public place ...

<http://apps.leg.wa.gov/RCW/default.aspx?cite=69.51A>.

© Katie Johnson, MN, RN-BC, NCSN - OSPI

© 58

Medical Marijuana

- "... a district that allows marijuana on school grounds puts its Title I and any other federal funding at risk.
- Any school nurse or other staff person who administers medical marijuana, even to a "qualified patient" under Washington law, would risk criminal prosecution under federal law.
- The same would be true of staff members and students who possessed marijuana at school."

Heidi Maynard WSSDA Newsletter, October 2012

© Katie Johnson, MN, RN-BC, NCSN - OSPI

© 59

Blood Borne Pathogens

- RCW 70.24.290 HIV Instruction for PS Employees
- WAC 296-823 Occupational exposure to bloodborne pathogens
- WAC 392-198
- WAC 296-802; 296-27 Records and reporting
 - OSPI Guidelines for Training on HIV /AIDS & BBP <http://www.k12.wa.us/HealthServices/subdocs/GuidelinesHIVBloodborne.pdf>
- Department of Labor and Industries
 - Employees with potential exposure
 - Identification
 - Training
 - Control of exposure
 - Personal Protection Equipment
 - Hepatitis B Vaccine provision at no cost to employee
 - Examples of vulnerable employees at Dept of L&I <http://www.lni.wa.gov/Safety/Topics/Atoz/default.asp?KWID=39>

© Katie Johnson, MN, RN-BC, NCSN - OSPI

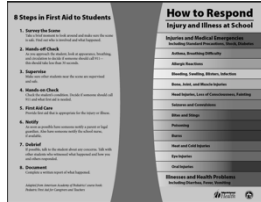
© 60

Infection Control

- Infectious Diseases – Limiting Contact
 - RCW 28A.210.010 <http://apps.leg.wa.gov/RCW/default.aspx?cite=28A.210.010>
- Infectious Disease Control Guide
 - <http://www.k12.wa.us/HealthServices/pubdocs/InfectiousDiseaseControlGuide3-11-04.pdf>
- Pandemic Flu Resources
- MRSA Resources
 - <http://www.tpchd.org/health-wellness-1/diseases-conditions/methicillin-resistant-staphylococcus-aureus-mrsa/mrsa-toolkit-middle-high-schools/>

Illness / Injury

- How to Respond: Injury and Illness at School
 - http://www.doh.wa.gov/materials/how-to-respond-injury-and-illness-at-school/12_injuryillness_F10L.pdf



Head Injury / TBI

- RCW 28A.600 amended by HB 1824 Youth Sports – Head Injury Policies (Lystedt law)
- OSPI Bulletin 043-09M Head Injury
- Requires statement of compliance with policies to manage concussion and head injury.
- Remove youth athlete from play with suspected concussion or head injury
 - Unfill evaluation by LHCP trained in management of concussion
 - Written clearance required
- Collaborate with WIAA on forms
- Annual information fact sheet to parents/athletes
 - <http://www.leg.wa.gov/pub/billinfo/2009-10/Pdf/Bills/Session%20Law%202009/1824.SL.pdf>

CIC

Clean Intermittent Catheterization

<http://apps.leg.wa.gov/RCW/default.aspx?cite=18.79.290>
RCW 28A.210.280; RCW 18.79.290; WAC 246-840-820

- Written, current and unexpired request
 - From parent
 - From physician
- Written, current and unexpired instructions from ARNP or RN
 - Designation of school employee
 - Description of nature of supervision
- Training must be documented
- Staff may refuse if not previously agreed per contract
- Immunity from liability provisions under RCW 28A.210.290

© Katie Johnson, MN, RN-BC, NCSN - OSPI

64

Home Hospital

- WAC 392-172A-02100
- OSPI Bulletin 069-10 – Home Hospital Procedures and Reporting
- Temporary tutoring support for a physical or mental disability or illness
 - Not for student caring for infant or relative who is ill
 - Minimum of 4 weeks – maximum of 18 weeks – may be intermittent
- Need LHCP order
- District assigns tutor

© Katie Johnson, MN, RN-BC, NCSN - OSPI

65


Home Hospital

- \$55/week for hospital; \$60/week for home
- Consider eligibility for 504 and SpEd
- Districts have obligation to support FAPE
 - HH may not be adequate
 - Homebound services may be required
 - Alternative educational programs
<http://www.k12.wa.us/AlternativeEd/default.aspx>

© Katie Johnson, MN, RN-BC, NCSN - OSPI

66

Coordinated School Health




- Physical Inactivity
- Poor Nutrition
- Tobacco Use
- Sexual Risk Taking
- Alcohol and other Drug Use
- Injury and Violence

Contact Sarah Butzine,
OSPI Supervisor,
Coordinated School Health
360-725-6050
Sarah.Butzine@k12.wa.us

© Katie Johnson, MN, RN-BC, NCSN - OSPI © 67

Thank you! Questions??

Katie Johnson, MN, RN, NCSN
OSPI Health Services
Katie.Johnson@k12.wa.us



© Katie Johnson, MN, RN-BC, NCSN - OSPI © 68
