

The official newsletter of Tacoma South Puget Sound MESA.

<https://www.plu.edu/mesa/>

TACOMA MESA UPDATES

Over the past few months we have hosted several virtual events while distributing MESA Day supplies to all of our 266 students that signed up for our program this year! Past events include:

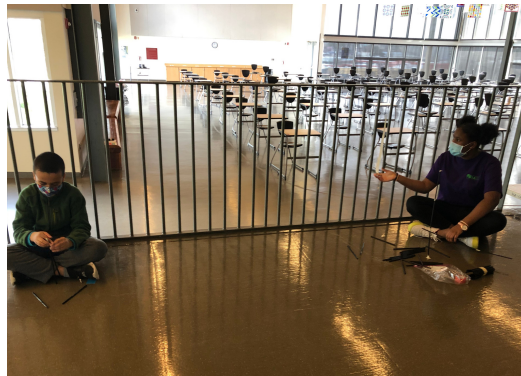
- Parent Welcome Night
- Career Day
- College Access Workshop
- Virtual College Fairs
- Family STEM Movie Night: Hidden Figures
- FASFA/WASFA Workshop
- Pre-MESA Week



GET READY, MESA WEEK IS COMING!!!

Next week Tacoma MESA will be hosting our annual MESA Day! MESA will virtually be hosting three MESA days making April 12th – April 15th MESA WEEK! We are excited to see our students compete against one another and showcase their STEM skills. Last Month we had students compete amongst their classmates to qualify for a spot to compete and participate in our virtual MESA Week. It was awesome to get a sneak peek of what the students have been working on while adjusting to being back in school and excited about MESA.

Below are pictures of students at Gray Middle School doing one of the MESA day challenges. Photos were provided by our MESA teacher Mr. Phill Schmitt.



KAREN ROSS



MESA SPOTLIGHT

ELIJAH PAEZ



What do you teach, and where?

I am an Instructional Coach at First Creek Middle School. As an Instructional Coach, I work with all educators, but my primary focus is Math and Science Educators.

How long have you been teaching?

I have been an educator for 13 years with teaching certificates in Missouri, Texas, and Washington. I have a Master's degree in Education with an emphasis on Curriculum and Instruction.

How long have you been with MESA?

I have been with a MESA instructor for two years. I have also been a part of the following STEM programs:

- PROPEL – An after school STEM program for middle school girls. (2019)
- Black Girls Code (2019)
- Challenger Academy -Challenger Learning Center- St. Louis is a part of a worldwide network founded by the astronauts' families tragically lost during the 1986 challenger space shuttle mission. The Center engages people of all ages in space mission simulations, STEM education programs. (2015)
- STEM Educator Innovator-The Missouri Mathematics and Science Coalition, a Missouri Chamber Education Foundation program, has partnered with the Monsanto Company launched a statewide STEM educator program. (2014)

Why should students participate in MESA?

MESA is an excellent program because it provides opportunities for hands-on and minds-on lessons for students.

Students use a combination of engineering, math, science, and technology to complete tasks in a fun, relaxed environment. The MESA experience allows students to develop in many areas such as creativity, inquiry skills, critical analysis, teamwork and collaboration, initiative, problem-solving.

How long have you been with MESA?

I have been involved with MESA as a student every year since seventh grade. Each year, I've participated regionally in Tacoma and at the state level at the Microsoft Conference Center in Redmond. This is my first year as a MESA mentor, as opposed to a MESA mentee.

Favorite MESA memory

One of my favorite MESA Day events has been "The Box Challenge." In previous years, the challenge was to improvise a machine using randomly selected materials to accomplish a task. It was always interesting to see what my peers produced, and outcomes were often ingenious and sometimes funny.

Where are you from, What school do you attend, What is your major.

I grew up in Parkland, right next to Pacific Lutheran University. I am now attending PLU as a first-year student, where I am double-majoring in Mathematics and Environmental Studies.

2021 SUMMER STEM ACADEMY

THIS SUMMER TACOMA MESA WILL BE HOSTING OUR ANNUAL SUMMER STEM ACADEMY FOR MIDDLE SCHOOL AND HIGH SCHOOL STUDENTS. THIS YEAR THE TOPICS THAT WE WILL BE FOCUSING ON ARE:

- MUSIC PRODUCTION AND DJING
- ROBOTICS AND GAMING
- COOKING WITH SCIENCE

MORE INFORMATION WILL BE RELEASED ON OUR WEBSITE SOON UNDER OUR SUMMER TAB: [HTTPS://WWW.PLU.EDU/MESA/](https://www.plu.edu/mesa/)



Upcoming Tacoma MESA Events:

APRIL 12th - 15th	MESA WEEK
APRIL 12th	Elementary MESA Day
APRIL 13th	Middle School MESA Day
APRIL 15th	High School MESA Day
MAY 6th	End of The Year Celebration
JULY 12th - 29th	Summer STEM Academy

