

PLU THEATRE &  
DANCE PRESENTS:

# OFF BROADWAY: A MUSICAL REVUE

**AN EVENING OF  
SONGS FROM  
MUSICALS THAT  
HAVE NEVER  
APPEARED ON  
BROADWAY,  
PERFORMED BY PLU'S  
BRIGHTEST TALENTS!**  
(CONTAINS ADULT CONTENT)

**OCTOBER 6**  
@ 7:30PM

**OCTOBER 7**  
@ 5:30PM

EASTVOLD AUDITORIUM IN THE  
KAREN HILLE PHILLIPS CENTER  
FOR THE PERFORMING ARTS

Directed by **Tom Smith** and **Kody Smith** → Musical Direction by **Amy Boers** → Choreography by **Taya Lovejoy**

# SONGS

**Starchild** from *Ghost Quartet*, music and lyrics by Dave Malloy

Soloist: **Presley Clark**

Ensemble: **Joel Barkman, Brady Grahe, Lilla Seitz**

**Willow** from *Venice*, music by Matt Sax, lyrics by Matt Sax and Eric Rosen

Soloists: **Madison Ashley\*, Kiana Kendall**

Dancers: **Brianna Hughes, Samantha Katz\***

**Live Out Loud** from *A Little Princess*, music by Andrew Lipka, lyrics by Brian Crawley

**Kyra McCloud**

**If You Knew** from *Lizzie*, music by Steven Cheslik-DeMeyer and Alan Stevens Hewitt, lyrics by Steven Cheslik-DeMeyer and Tim Maner

**Ashley Midlo**

**Surabaya Santa** from *Songs for a New World*, music and lyrics by Jason Robert Brown

**Brianna Hughes**

**If I Only Had One Day** from *Superhero*, music and lyrics by Tom Kitt

**Presley Clark, Justin McCathren**

**Cecily Smith** from *Fly By Night*, music and lyrics by Will Connolly, Michael Mitnick, and Kim Rosenstock

Soloist: **Joel Barkman**

Ensemble: **Madison Ashley\*, Brandon Foster\*, Brady Grahe,**

**Kiana Kendall, Paulina Kormos, Justin McCathren,**

**Kyra McCloud**

**Afternoon** from *Alice by Heart*, music by Duncan Sheik, lyrics by Steven Sater

**Paulina Kormos, Gabriel Stadtmueller**

**Candy Store** from *Heathers The Musical*, music by Laurence O'Keefe and Kevin Murphy

**Samantha Katz\*, Paulina Kormos, Erika LeBlanc, Ashley Midlo**

**\*\*10-minute intermission\*\***

\*Denotes membership in Alpha Psi Omega (ΑΨΩ), National Theater Honor Society

# SONGS

**Green Green Dress** from *Tick, Tick... Boom!*, music and lyrics by Jonathan Larson

**Brady Grahe, Allie Watkins**

**Stars** from *Open, Stay*, music and lyrics by Anna DeNoia and Joshua Villa  
**Madison Ashley\***

**The Starry Night** from *Starry*, music by Matt Dahan, lyrics by Kelly Lynne D'Angelo and Matt Dahan

**Joel Barkman**

**I'm Just a Sidekick** from *A Very Potter Senior Year*, music and lyrics by Clark Baxtresser, Pierce Siebers, A.J. Holmes and Darren Criss

**Brandon Foster\***

**A World Inside** from *Ride the Cyclone*, music and lyrics by Jacob Richmond and Brooke Maxwell

Soloist: **Kay Fitton**

Ensemble: **Joel Barkman, Brady Grahe, Kiana Kendall, Dorothea Koetje\*, Justin McCathren, Ashley Midlo, Gabriel Stadtmueller, Allie Watkins**

**Pretty Funny** from *Dogfight*, music and lyrics by Benj Pasek and Justin Paul  
**Lilla Seitz**

**The Life of the Party** from *The Wild Party*, music and lyrics by Andrew Lippa

Soloist: **Brianna Hughes**

Dancers: **Presley Clark, Kay Fitton, Erika LeBlanc, Allie Watkins**

**This Time** from *Now. Hear. This.*, music and lyrics by Jeff Bowen  
**Dorothea Koetje\***

**Relativity** from *The Theory of Relativity*, music and lyrics by Neil Bartram

Soloists: **Erika LeBlanc, Justin McCathren, Kyra McCloud, Lilla Seitz, Gabriel Stadtmueller**

Ensemble: **Madison Ashley\*, Joel Barkman, Presley Clark, Kay Fitton, Brandon Foster\*, Brady Grahe, Brianna Hughes, Samantha Katz\*, Kiana Kendall, Dorothea Koetje\*, Paulina Kormos, Ashley Midlo, Allie Watkins**

## PRODUCTION TEAM

DIRECTOR/PROPS.....	Tom Smith
DIRECTOR.....	Kody Smith*
MUSIC DIRECTOR/ACCOMPANIST.....	Amy Boers
CHOREOGRAPHER.....	Taya Lovejoy
SCENIC DESIGNER/LIGHTING DESIGNER.....	Amanda Sweger
COSTUME DESIGNER.....	Zivia Mae Knickrehm Rich*
LIGHTING DESIGNER.....	Glen Fritz*
SOUND DESIGN/SOUND BOARD OPERATOR.....	Hanne Laurel*
TECHNICAL DIRECTOR.....	Keenan Minogue
COSTUME SHOP MANAGER.....	Kathleen Anderson*
STAGE MANAGER.....	Audrey Williams*

## PRODUCTION CREW

ASSISTANT LIGHTING DESIGNER.....	Anna Van Vleet*
ASSISTANT STAGE MANAGER.....	Jane Davie
ADDITIONAL CHOREOGRAPHY.....	Brianna Hughes
TECHNICAL ASSISTANTS.....	Ashton Allen, Morgan Choate-Deeds, David Cope-Powell, Presley Clark, Josiah Devine-Johnson, Brandon Foster*, Glen Fritz*, Alonna Hall, Brianna Hughes, Addy Keller*, Liam Krane, Erika LeBlanc, Alexander Mackenzie, Neena Malcom*, Joseph Stitzel, Anna Van Vleet*, Jenn Zirko, and the Fall 2023 Theatrical Production class
LEAD ELECTRICIAN/LIGHTING ADVISOR.....	Amanda Sweger
ELECTRICIANS.....	Alonna Hall, Brianna Hughes, Erika LeBlanc, Braeden Linkenback, Kyra McCloud, Peyton Noreen*, John Pedro, Bronwyn Poppen-Eagan, Joseph Stitzel, Monroe Torkelson
COSTUME SHOP ASSISTANT.....	Dorothea Koetje
FIGHT/LIFT CAPTAINS.....	Samantha Katz, Erika LeBlanc

## RUNNING CREW

ASSISTANT HOUSE MANAGER.....	Ashton Allen
LIGHT BOARD OPERATOR.....	Parker Brown*
SOUND ASSISTANT.....	Zane Davenport
SPOTLIGHT OPERATORS.....	Addy Keller*, Marla Kelly
STAGE CREW/USHERS.....	Kenzie Knapp, Bil Nowicki, Iyana Scott
WARDROBE/COSTUME CREW.....	Marissa Boeshaar

\*Denotes membership in Alpha Psi Omega (ΑΨΩ), National Theater Honor Society

## CAST BIOGRAPHIES



**Madison Ashley** is a fourth-year musical theatre major from Redmond, OR whose recent credits include Maureen in *RENT* (Bend Theatre in the Park), Mom in *Sagittarius Ponderosa* (PLU), and Ermengarde in *The Matchmaker* (PLU). She would like to thank her parents for being her greatest supporters, Samantha, Glen, and her directors for this wonderful opportunity!



**Joel Barkman** is a fourth-year music and religion double major from Shelton, WA whose recent credits include Dominique Bretodeau in *Amélie* (PLU), Ensemble in *NOMT: Coming Home* (PLU), and playing percussion in the pit for *Pippin* (PLU). He would like to thank his family and friends for continuing to encourage him to perform, and the directors for the amazing experience.



**Presley Clark** is a third-year musical theatre and studio art double major from San Juan Island, WA whose recent credits include Georgette in *Amélie* (PLU), a Ensemble in *NOMT: Coming Home* (PLU), and Jess in *Does the Sun Shine at the End of the World?* (PLU). She would like to thank her friends and family for their ongoing support, and the cast and crew of this awesome show!



**Kay Fitton** is a first-year theatre and computer science double major from Santa Barbara, CA whose recent credits include The Baker in *Into the Woods*, Nigel in *Something Rotten!*, and Robert Martin in *The Drowsy Chaperone*. They would like to thank their friends and amazing partner for supporting them through their first show at PLU.



**Bradon Foster** is a PLUS year theatre and computer science double major from Eugene, OR whose recent credits include Garden Gnome in *Amélie* (PLU), Rudolph in *The Matchmaker* (PLU), and Old Man in *Twisted Tales of Poe* (PLU). He would like to thank his family and roommates for their continued support, and the cast and crew for this amazing opportunity.

## CAST BIOGRAPHIES



**Brady Grahe** is a fifth-year chemistry major from Tacoma, WA whose recent credits include Raphael Poulin in *Amélie* (PLU), Player in *Pippin* (PLU), and Company in *Make 'Em Laugh: a comedic cabaret* (PLU). They would like to thank the directing team for this opportunity and the supportive friends and family that encourage him.



**Brianna Hughes** is a senior theatre and film and media communications double major from Cashmere, WA whose recent credits include Tiana/Ensemble in *When You Wish Upon A Star: a musical revue* (PLU), Dancer in *Dance 2023* (PLU), and Ensemble in *NOMT: Before the Parade Passes By* (PLU). They would like to thank Tom Smith, Amanda Sweger, and Amy Boers for supporting them during their time at PLU and truly teaching them how to perform musical theatre.



**Samantha Katz** is a fourth-year musical theatre major from Wilsonville, OR whose recent credits include Young Amelie in *Amélie* (PLU), Dolly Levi in *The Matchmaker* (PLU), and Giselle/ Ensemble in *When You Wish Upon A Star: a musical revue* (PLU). She would like to thank her parents, friends, and peers for their support and the production team of this revue for making this wonderful showcase come to life.



**Kiana Kendall** is a third-year transfer student who is pursuing a major in theatre from Sultan, WA. She is new to theater, this being only her second show ever, and the first being *Beehive: The 60's Musical* (Green River College). She would like to thank the directors and her castmates for their time, effort, and collaboration, as well as Zach, Autumn, and her parents Janos and Quamy who have tirelessly supported her in her new chapter here at PLU.



**Dorothea Koetje** is a third-year musical theatre major from Edmonds, WA whose recent credits include Amélie Understudy/Ensemble in *Amélie* (PLU), Lillith in *She Kills Monsters* (PLU), and Mrs. Darbus in *High School Musical the Musical* (Edmonds-Woodway High School). She would like to thank her friends and family for their support.

## CAST BIOGRAPHIES



**Paulina Kormos** is a sophomore music education major from Tacoma, WA whose recent credits include Mrs. MacAfee in *Bye Bye Birdie* (Bellarmine Preparatory School), Ensemble in *The Birds* (Bellarmine Preparatory School), and Katherine in *Freaky Friday* (Bellarmine Preparatory School). She would like to thank her family for always supporting and encouraging her when it comes to theatre and director Tom Smith for this opportunity.



**Erika LeBlanc** is a sophomore musical theatre and political science double major from British Columbia, Canada whose recent credits include Ensemble in *NOMT: Coming Home* (PLU), Tourist/Ensemble in *Amélie* (PLU), and Rapunzel/Ensemble in *When You Wish Upon A Star: a musical revue* (PLU). She would like to thank this amazing cast and her family. Enjoy the show!



**Justin McCathren** is a first-year kinesiology major whose recent credits include Jack Kelly in *Newsies* (The Lakewood Playhouse), Luigi/Tony in *Lucky Stiff* (Bellarmine Preparatory High School), and Anthony Hope and Sweeney Todd Understudy/Ensemble in *Sweeney Todd: The Demon Barber of Fleet Street* (The Lakewood Playhouse). He would like to thank his family, past directors Debbie Armstrong, Kirsten McCarl, Brien O'Loughlin and Tom Smith for this amazing opportunity.



**Kyra McCloud** is a second-year musical theatre major from Gresham, OR whose recent credits include Mary Poppins/Ensemble in *When You Wish Upon A Star: a musical revue* (PLU), Gina in *Amélie* (PLU), and Ensemble in *NOMT: Coming Home* (PLU). She would like to thank her family and friends, directors Tom Smith and Kody Smith for this amazing opportunity, and Amy Boers for being the best musical director.



FIND US ON SOCIAL MEDIA!  
@plutheatredance



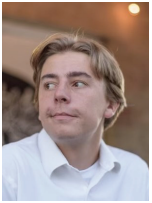
## CAST BIOGRAPHIES



**Ashley Midlo** is a first-year at PLU from Eagle River, AK. She has a passion for theatre and digital art, flying to Sitka to perform in musicals during the summer. Her last and favorite role so far was Charlotte in *Rodgers and Hammerstein's Cinderella*. She has also been in productions of *Willy Wonka* and *Mamma Mia*. You can often find her wandering outdoors with an ice-cold Diet Coke.



**Lilla Seitz** is a third-year film and media communications major and music minor from Keizer, OR. She is thrilled to be in her first production at PLU. She would like to thank Taya, Kyla, Marissa, and Noe for being the best cheerleaders a girl could ask for!



**Gabriel Stadtmueller** is a first-year engineering major from Fort Collins, CO whose recent credits include Spongebob in *The Spongebob Musical* (Fort Collins High School) and Harry Bright in *Mamma Mia* (Barbara Lueck Musical Theater Intensive). He would like to thank the new friends he's made in his first show at PLU.



**Allie Watkins** is a fourth-year sociology major from Puyallup, WA whose recent credits include Ensemble in *NOMT: Coming Home* (PLU) and Ensemble in *NOMT: Before the Parade Passes By* (PLU). She would like to thank the Clay Crows, her friends, her family, and Brady (the best duet partner ever!), for being so supportive and encouraging. She wants to especially thank Tom, Kody, Taya, and the rest of the production team for all their hard work and for this opportunity!

## PRODUCTION BIOGRAPHIES

**Kathleen Anderson** (Costume Shop Manager) has an MFA in Costume and Set Design from Northwestern University. Her favorite designs for PLU Theatre include costume and set designs for *Twelfth Night* and *The Spitfire Grill*, costume design for *Cabaret*, *A Dream Play*, and *The Fantasticks*, and puppet and costume design for *The Floating World*. She has also designed extensively for Tacoma Opera and Harlequin Productions in Olympia.



# PRODUCTION BIOGRAPHIES

**Amy E. Boers** (Musical Director/Accompanist) is one of the region's most-sought-after collaborative artists. As such she is well known as a pianist, coach, teacher, and music director. Her playing for conductors and professional soloists has been characterized as deeply expressive, artistic, and insightfully supportive. Amy's work as conductor, director, and pianist ranges from musical theatre, church, ACDA regional honor choirs, to choral organizations throughout the Puget Sound. She is currently serving as collaborative pianist with numerous local high schools, choir director for Grace Lutheran Church, Des Moines, staff pianist at Pacific Lutheran University, accompanist with Symphony Tacoma Chorus, and is principal pianist for Symphony Tacoma. Amy has spent most of her time in theatre at the playing keyboard for many shows, and more recently been musical director for numerous productions including *The Fantasticks*, *Sympathy Jones*, *The Last Five Years*, *Amélie*, and *When You Wish Upon A Star: a musical revue*.

**Jane Davie** (Assistant Stage Manager) is a fifth-year acting/directing major with a minor in critical race studies. Her most recent production roles include co-stage managing APO's 2023 J-Term One-Acts festival (PLU), costume designing for *Don't Let the Pigeon Drive the Bus! The Musical* (Millbrook Playhouse), and stage managing and costume consulting for *The Three Little Pigs* (Valley Center Stage). As always, Jane would like to thank, her friends, family, and special guy, for their continued support, as well as the folks in the department.

**Hanne Laure'I** (Sound Designer/Sound Board Operator) is a PLUS year acting/directing and design/tech double major from West Seattle, WA whose recent sound design credits include *Murder at Mapplethorpe Manor* (Taproot Theatre), *She Kills Monsters* (PLU), and *The Matchmaker* (PLU). They would like to thank their partner Adaline for their love and support.

**Glen Fritz** (Lighting Designer) is a senior musical theatre and design/tech double major from Poulsbo, WA, whose recent credits include lighting design for *The Matchmaker* (PLU), lighting designer/lead electrician for *Cats and Dogs* (Northwest Theatre Lab), as well as playing Jack Kelly in *Newsies* (Central Stage Theatre). He would like to thank the Assistant Lighting Advisor, Anna, the faculty at PLU, and his partner Teagan for all the help and support throughout the process!

# PRODUCTION BIOGRAPHIES

**Taya Lovejoy** (Choreographer) is a fourth-year acting/directing major with minors in dance, Hispanic studies, and writing from Walla Walla, WA. Her recent choreographic credits include "Motion Sickness" for *Dance 2023* (PLU) and assistant choreographing *When You Wish Upon A Star: A Musical Revue* (PLU); however, you may have also seen her acting in *The Matchmaker* (PLU). She would like to thank Jaqui, her roommates, and her parents for their continued support, the cast for all of their hard work and dedication, and Tom and Kody for this incredible opportunity!

**Keenan Minogue** (Technical Director) is a Designer, Educator, and Artist with a broad expertise in all things theatre. He has been afforded the opportunity to practice his craft in nine states, although his residence at Pacific Lutheran University is a west-coast debut of sorts. Previously, he has designed props for the world premiere of Theresa Rebeck's *Downstairs*, built or painted sets for the many theaters of Chicago, and collaborated on projects within the live events industry at-large. Keenan Received his MFA in Theatrical Design and Production Technology from the University of Memphis in 2017.

**Zivia Mae Knickrehm Rich** (Costume Designer) is thrilled to be designing this revue! Her recent costume design credits include *The Elixir of Love* (PLU Opera), *Normalcy: A Climate Fiction Musical* (PLU), and *Late: A Cowboy Song* (PLU). She'd like to thank her friends and family, as well as Tom and Kody for the opportunity to work on this production.

**Kody Smith** (Director) is a fourth-year acting/directing major from Everett, WA. He began his directing career his senior year at Everett High School where he directed *Payphone*, a one act play. At PLU he worked as assistant director on *Dust*, directed *The Dinner Table*, and wrote and directed *Does the Sun Still Shine at the End of the World?*. He is extremely excited to bring all of this unsung music to the PLU community. He is especially thankful to Tom and the rest of the production team. He would also like to give thanks to all the cast as well as friends and family, with special shoutouts to GC and NN. He hopes you enjoy this night of Off-Broadway!

**Tom Smith** (Director/Props) is a Professor of Theatre. Previous productions at PLU include *When You Wish...*, *Miranda's Cafe*, *Reckless*, *Broadway at the Movies*, *The Last Five Years*, *Comedy of Errors*, *Sweeney Todd*, *Broadway Today!*, *Moon Over Buffalo*, *Aunt Raini* (regional premiere), and *The Shape of Things*. He thanks Kody, Amy, Taya, Audrey, Jane and the amazing cast and crew for their many talents. Tom is a proud member of Dramatists Guild and Society of Stage Directors and Choreographers.

# PRODUCTION BIOGRAPHIES

**Amanda Sweger** (Scenic Designer/Lighting Designer/Lead Electrician/Lighting Advisor) is Chair of Theatre and Dance and a lighting and scenic designer who has freelanced in Seattle, Chicago, Nashville, and Philadelphia. She received an MFA from Northwestern University in 2011 and is now a tenured professor at Pacific Lutheran University. She is proud to have designed with companies such as The Second City, TimeLine Theatre, the Seattle Theatre Group, and Taproot Theatre Company.

**Anna Van Vleet** (Assistant Lighting Designer) is a PLUS year design/tech major from Auburn, WA whose recent lighting design credits include *Bright Star* (Village Theatre KIDSTAGE), *The Elixir of Love* (PLU Opera), and *When You Wish Upon A Star: a musical revue* (PLU). She would like to thank Team Lighting, (Glen and Amanda), her best friend Brooke, and her family for their support.

**Audrey Williams** (Stage Manager) is a third-year theatre major from Vancouver, WA whose recent credits include stage managing *Dance 2023* (PLU) and *The Wizard of Oz* at Metropolitan Performing Arts. They would like to thank their family, the cast, the crew, their Assistant Stage Manager, Jane, Tom and Kody for being such wonderful people to work with.

## COMING NEXT...

### ***Macbeth***

November 9-11 @ 7:30pm; Eastvold Auditorium

*Alpha Psi Omega presents*

### ***Melancholy Play***

December 7-9 @ 7:30pm; Studio Theatre

*PLU Dance Team presents*

### ***Dance Team Winter Showcase***

December 8 & 9 @ 7:30pm; Eastvold Auditorium



## DIRECTORS' NOTES

PLU Theatre & Dance is thrilled to open our 2023-24 season with this amazing revue performed by 18 incredible singers onstage with over 40 students working behind the scenes! We are particularly excited to share this performance with PLU alumni during Homecoming weekend. We hope to provide you with incredible new memories of your alma mater.

Each year we choose a theme for our revue to highlight a specific aspect of music written for the stage and this year we've selected songs from musicals that have not yet had their Broadway debut. We hope, after you hear these songs from 18 "off Broadway" musicals tonight, that you get a strong sense of the immense talent of the composers and lyricists writing for the American theatre today.

We appreciate your coming to our production tonight, for supporting us and, especially, for supporting live theatre.

**--Tom Smith and Kody Smith ('24)**

## Want to get involved in theatre and/or dance at PLU?

Use this QR code to see the weekly PLU Theatre and Dance newsletter which has information about auditions, involvement, announcements, and paid jobs!



## Special Thanks...

Cameron Bennett, Dean of the College of Professional Studies;  
Associate Dean Brian Galante and the School of Music, Theatre &  
Dance; Patrick Brockwell; Cassandra Garrison; Art Giddings;  
Travis Pagel; and Kerstin Shaffer