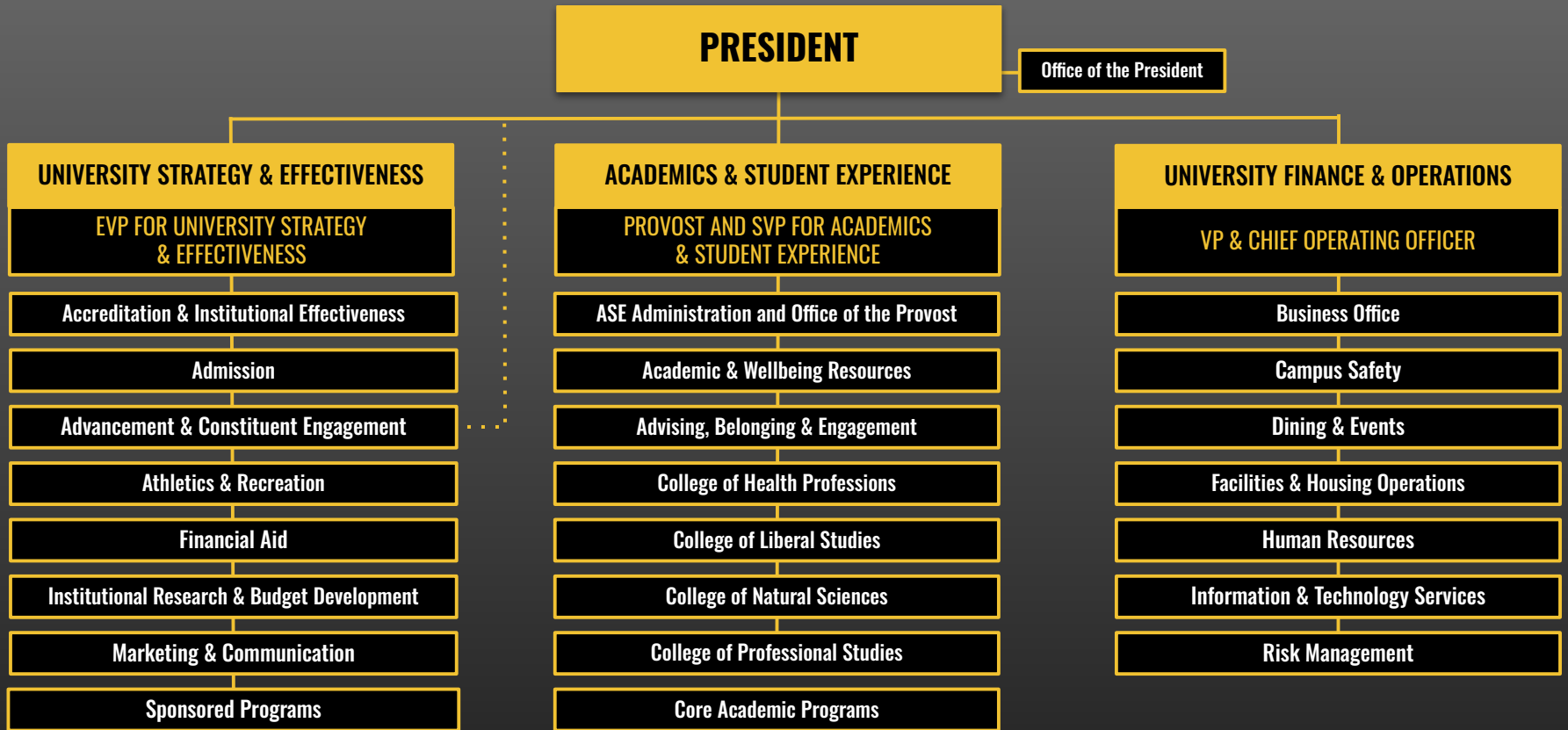


PLU DIVISIONAL ORG. CHART



*ASE Administration & Office of the Provost:* Campus Ministry, Faculty Governance, Student Experience Program Review

*Academic & Wellbeing Resources:* Academic Records (Registrar), Language Resource & Writing Centers, Library, Tutoring, Wang Center, Wild Hope Center, and Wellness Resources & Services (WSR)

*Advising, Belonging & Engagement:* Campus Life, Center for DJJ, Center for Student Success (CSS), and Title VI/VII/IX

*Core Academic Programs:* Faculty Development, Gen Ed, IHON, Inclusive Excellence, FYEP