



THE LODGEPOLE

Newsletter
from the SCC
Intern
Nov. 11, 2023

UPCOMING EVENTS

Sankta Lucia Rehersal

In the Scan Center on
November 12th
from 2:00pm to 4:00pm

Jul Decor

In the Scan Center on
**November 15th, 16th,
17th**
from 10:00am to 5:00pm

Julemarked

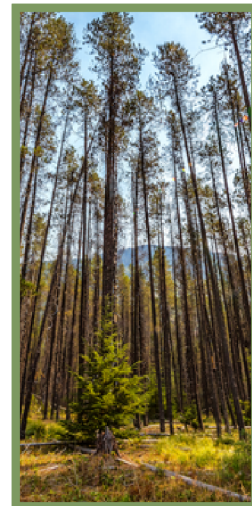
In the Scan Center on
November 19th,
from 12:00pm to 4:00pm

Sylvsmidja

In the Scan Center on
November 21st,
from 12:00pm to 4:00pm

THE NAME OF DAY

It has come to my attention that there are a few folks who are confused about the name of this publication. I named this newsletter after the Lodgepole Pine (Pinus Contorta) which are native to the west coast and the plains. Lodgepoles were used by indigenous people as food, medicine and shelter. Settlers and immigrants used Lodgepole pines to make log cabins, railroad ties and mine props. Honestly I name the newsletter this because I found some excellent pinecone art and the name just had a nice ring to it.



STUDENT RUN JULEMARKED

ATTENTION: JULEMARKED ON SUNDAY NOV. 19TH

Next Sunday is our annual Julemarked where participating students will sell the goods they have been working so hard on for the last few months and folks will be able to buy them. This year we have crocheted items, jewelry, cookies/sweets, paintings, clothes, block prints and so much more. It is a great way to get unique gifts for family members while supporting your fellow students. Set up will begin at 11:00am and the Market will open for the general public at 12:00pm.

The Julemarked will also have members of the local community there to demonstrate their crafts. This means they will have their own stations, but instead of selling they will be giving away starter sets and information on different scandinavian cultural crafts such as Rosemaling as seen in the picture.



Contact us at: scanctr@plu.edu
or swing by the office at AUC 109

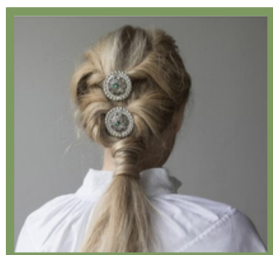


THE LODGEPOLE

Newsletter
from the SCC
Intern
Nov. 11, 2023

SYLVSMIDJA SILVERSMITHS

Are you looking to learn more about Norwegian cultural jewelry? Did the beautiful display in the Scan Center strike your fancy? If so, join us in looking at one of Norway's leading producers of fine silver and gold jewelry in traditional and modern designs since 1940. Explore their product line, and bring along your treasured sølje pieces and learn how to care for them from an expert Norwegian goldsmith.



DECEMBER MOVIE NIGHT

Scan the QR code to vote on the movie we watch on **December 2nd**. Keep your answer and the options quiet so we have a fair vote!



JUL DECOR & SANKTA LUCIA

I, Maddie (the SCC intern) personally love decorating the Scan Center each year for Christmas. I love opening boxes and discovering new ornaments that I haven't seen before. I love arguing with people over 80 about climbing up ladders. I love decorating the huge Christmas trees and hiding the mini julebukk around the room. It is a great time, Christmas music, cookies, hot chocolate and cheer. By the end of the decorating days the whole place is transformed into a Christmas wonderland filled with lights, artifacts and joy. **The second Sankta Lucia Rehearsal is from 2-4 tomorrow!**



I HOPE TO SEE YOU THERE!

Contact us at: scanctr@plu.edu or swing by the office at AUC 109