

STUDY ABROAD AND EXCHANGE

WELLINGTON, NEW ZEALAND

VICTORIA
UNIVERSITY
WELLINGTON

TE WHARE WĀNANGA
O TE ŪPOKO O TE IKA A MĀUI



NEW ZEALAND

QS STARSTM
RATING SYSTEM

2019



CAPITAL
THINKING.
GLOBALLY
MINDED.

MAI I TE IHO KI TE PAE

New Zealand has it all—quality education, breathtaking scenery, a vibrant culture, and some of the friendliest people anywhere in the world.

New Zealand's compact size (similar to that of Japan or the UK) means you are just a short distance away from some of the most stunning destinations in the world.

EXPLORE AOTEAROA NEW ZEALAND

Take the chance to explore New Zealand while you are here to study—your options for adventure are endless



Image: WellingtonNZ.com



Image: WellingtonNZ.com

In New Zealand, you'll find everything from snow-capped mountains, golden sandy beaches, whale watching, bungee jumping, natural thermal hot springs, world-renowned hiking trails, beautiful national parks, and bustling cities with world-class restaurants, theatres, museums, and activities for everyone.

www.newzealand.com

NEW ZEALAND AT A GLANCE

MĀORI NAME: Aotearoa

POPULATION: 4.8 million

CAPITAL: Wellington

OFFICIAL LANGUAGES:

English, Māori,
New Zealand Sign Language

CURRENCY:

New Zealand Dollar

WARMEST MONTHS:

January, February

COLDEST MONTHS:

July, August

GOVERNMENT:

Parliamentary democracy,
member of the Commonwealth



DISCOVER WELLINGTON

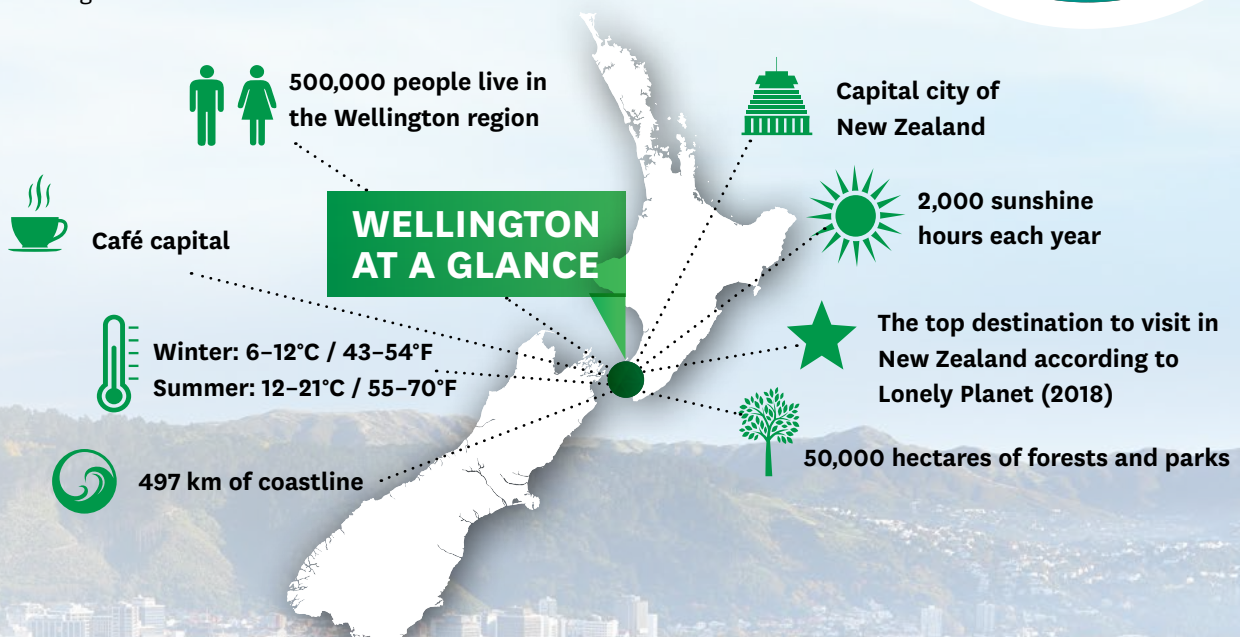


STUDY IN THE 'COOLEST LITTLE CAPITAL' THAT HAS IT ALL*

Wellington is the geographic, political, and cultural heart of New Zealand. Within the city's beautiful harbour setting, you'll find a great quality of life, a strong global outlook, and a study experience to remember.

- Wellington is the World's Most Liveable City for the second year running, as ranked by the Deutsche Bank Quality of Life Survey 2017 and 2018.
- Wellington is a diverse and creative capital with excellent facilities and a lively calendar of events throughout the year.
- The city is compact and easy to get around, with great public transport. Most attractions, shops, cafés, and campuses are within easy walking or biking distance.

#1
**WORLD'S MOST
LIVEABLE CITY
2017 & 2018**

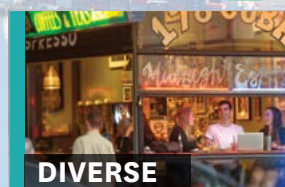


WELLINGTON IS AN IDEAL PLACE TO STUDY



CREATIVE

Wellington was named New Zealand's most creative city. It is home to Weta Workshop, Te Papa, the World of Wearable Arts, the New Zealand Festival of the Arts and more. *Infometrics, 2017*



DIVERSE

25% of people who live in Wellington were born outside of New Zealand, making it a diverse and welcoming city. *Statistics New Zealand, 2015*



CLEAN & GREEN

Renowned for its clean, fresh air and green outdoor spaces, Wellington city has more than 100 parks and playgrounds, as well as a stunning waterfront, beaches, forests, and coastline.



SAFE & FRIENDLY

Wellington is a safe and friendly place to live—it's currently ranked the 16th safest city in the world. *The Economist Safe Cities Index, 2017*

*Wellington was voted 'the coolest little capital in the world' in the *Lonely Planet 2011 Guide to Best in Travel*



Victoria University of Wellington has five stars overall in the QS Stars rating of excellence and five stars in each of the eight categories.

VICTORIA UNIVERSITY OF WELLINGTON



TOP 1% of the world's universities in 19 subject areas*

TOP 2% of the world's 18,000 universities**



New Zealand is ranked **best country in the world** for Educating for the Future***



3,500 of our **22,000** students are international students



4 libraries



8 teaching faculties



140+ clubs and societies



43 research institutes

OUR STUDENTS COME FROM MORE THAN 100 COUNTRIES AROUND THE WORLD



TRIPLE CROWN ACCREDITATION

Victoria Business School is among just 1 percent of business schools worldwide that hold the 'Triple Crown' of international accreditations:



*2019 QS World University Rankings by Subject
**2019 QS World University Rankings

***The Economist Intelligence Unit, 2017

Did you know? The tuatara is a lizard-like reptile that is only found in New Zealand. Their ancestors lived alongside dinosaurs, over 220 million years ago. You can visit our resident tuatara in their enclosure in Te Toki a Rata, the University's new science teaching and research building.

Tuatara on campus



3 CENTRAL CITY CAMPUSES IN WELLINGTON

STUDY WHAT YOU LOVE



Victoria University of Wellington currently offers 33 undergraduate and 139 postgraduate programmes, across 170 different subjects as well as specialised Study Abroad packages.

ARCHITECTURAL STUDIES AND BUILDING SCIENCE

Architecture
Architecture History and Theory
Interior Architecture
Landscape Architecture
Project Management
Sustainable Engineering Systems

BUSINESS

Accounting
Actuarial Science
Business Administration*
Business Analysis*
Commercial Law
Economics
Finance
Global Management*
Global Marketing*
Human Resource Management and Industrial Relations
Information Management*
Information Systems
International Business
Management
Marketing
Taxation
Tourism Management

DESIGN, FILM, AND MEDIA

Animation and Visual Effects
Communication Design
Design for Social Innovation
Fashion Design Technology
Film
Industrial Design
Interaction Design
Media Design
Media Studies
User Experience Design

EDUCATION AND TEACHING

Education
Second Language Learning and Teaching
Teacher Education (Early Childhood)
Teacher Education (Primary and Secondary)*
Teaching English to Speakers of Other Languages (TESOL)

ENGLISH LITERATURE AND CREATIVE WRITING

Creative Writing
English Literature

Literary and Creative Communication

ENGINEERING AND DIGITAL TECHNOLOGIES

Computer Graphics
Computer Science
Cybersecurity
Electronic and Computer System Engineering
Electronic and Computer Systems
Renewable Energy Systems
Software Engineering

ENVIRONMENTAL SCIENCES

Conservation Biology*
Ecological Restoration*
Ecology and Biodiversity
Environmental Science
Environmental Studies
Marine Biology
Marine Conservation*

HEALTH

Biomedical Science
Clinical Immunology*
Clinical Research*
Drug Discovery and Development*
Health Informatics
Health Promotion
Health Psychology
Health Software Development
Human Genetics
Midwifery*
Molecular Pathology
Molecular Pharmacology and Medicinal Chemistry
Nursing Science*
Population Health, Policy and Service Delivery

HISTORY AND PHILOSOPHY

Art History
Classical Studies
Greek
History
Latin
Museum and Heritage Studies*
Philosophy

LANGUAGES AND LINGUISTICS

Applied Linguistics*
Asian Studies

Chinese
French
German
Intercultural Communication
Intercultural Communication and Applied Translation*
Italian
Japanese
Linguistics
Literary Translation Studies*
Modern Language Studies
New Zealand Sign Language (NZSL) Studies
Pacific Studies
Samoan Studies / Matā'upu tau Samoa

Spanish
Te Reo Māori
Text Technologies
Writing (Academic and Professional)

LAW

International Trade*
Law

MATHEMATICS AND STATISTICS

Actuarial Science
Data Science
Mathematics
Statistics
Stochastic Processes in Finance and Insurance*

MUSIC AND THEATRE

Classical Performance
Composition / Sonic Arts*
Ethnomusicology*
Instrumental/Vocal Composition
Jazz Performance
Music
Musicology*
Music/Sound*
Music Studies
Music Therapy*
Performance*
Popular Music Studies
Sonic Arts and Music Technology
Theatre

POLITICS AND PUBLIC POLICY

e-Government*
International Relations
Migration Studies*
Political Communication

Political Science
Public Management*
Public Policy
Strategic Studies*

PSYCHOLOGY

Clinical Psychology*
Cognitive and Behavioural Neuroscience*
Cross-cultural Psychology*
Education and Psychology
Educational Psychology*
Forensic Psychology*
Health Psychology
Psychology

SCIENCE

Applied Physics
Biology
Biomedical Science
Biotechnology
Cell and Molecular Bioscience
Chemistry
Clinical Immunology*
Data Science
Drug Discovery and Development*
Geographic Information Science*
Geography
Geology
Geophysics (Meteorology, and Solid Earth)
Human Genetics
Molecular Microbiology*
Molecular Pathology
Molecular Pharmacology and Medicinal Chemistry
Petroleum Geoscience*
Physical Geography
Physics
Science Communication
Science in Society*

SOCIAL SCIENCES

Cultural Anthropology
Criminology
Development Studies
Gender and Sexuality Studies
Māori Resource Management
Māori Studies
Religious Studies
Social Policy
Sociology

* Available at postgraduate level only

STUDY SOMETHING NEW



LEARN ABOUT NEW ZEALAND

New Zealand has a rich and fascinating history, reflecting our unique mix of Māori, Pacific Islands, and European culture. Victoria University of Wellington offers a range of courses that can help you better understand New Zealand.

COURSE EXAMPLES	
MAOR 101	Te Tīmatanga / Introduction to Māori Language
MAOR 217	Peopling of Polynesia
PASI 101	The Pacific Heritage
PASI 202	Globalisation and Popular Culture in the Pacific
ARTH 336	Topics in Pacific Art
CRIM 203	Criminal Justice in Aotearoa New Zealand
EDUC 224	Pacific Nations Education
ENGL 112	Cultural Encounters—The Literature of Aotearoa New Zealand
ESCI 132	Antarctica—Unfreezing the Continent
ESCI 343	Volcanic Field Geology
CCDN 233	Design Ethnography
GEOG 214	Environment and Resources—New Zealand Perspectives
GEOG 313	Geographies of New Zealand
HIST 112	Islands and Peoples—Aotearoa New Zealand in World History
MDIA 201	Media in Aotearoa New Zealand
MUSC 351	Studies in Music and Dance of Oceania
NZSL 101	Introduction to New Zealand Sign Language
POLS 111	Introduction to New Zealand Government and Politics
SARC 352	Pacific Designed Environments
SPOL 113	Social and Public Policy—Values and Change



POPULAR COURSES

Maor 123: Te Iwi Māori me ana Tikanga / Māori Society and Culture

This course introduces students to a broad range of Māori beliefs, concepts, and structures that are important to the foundations and development of Māori society and culture.

FHSS/HRIR 207: The Future of Work

According to some predictions, 50 percent of all current jobs will become redundant in 10 years. This course examines the changing nature of the workforce. Students do a project for a Wellington organisation and make recommendations that may be implemented by the organisation.

BIOL 219: New Zealand Flora and Fauna

This course provides a thorough introduction to the unique history of New Zealand's natural flora and fauna. Field trips reinforce the concepts and give hands-on experience with native plants and animals.

INTP 244: New Zealand in the World

This course examines New Zealand as an actor in world politics with particular attention to its relationships with Asia, the United States, and Britain. It uses relevant expertise from New Zealand Government organisations to provide 'real world' examples of New Zealand's foreign and security policy in practice.

COMP 313: Computer Game Development

This course investigates tools, techniques, and concepts for building interactive computer games, including software engineering techniques, HCI principles, AI methods, and design strategies. The course is co-taught with Media Design and Music.

For a full list of course examples, go to:

▶ www.victoria.ac.nz/study-abroad

"I chose Victoria University of Wellington because it was offering a programme that sounded like my wildest dream come true.

"As it turns out, it was. I joined the Victoria International Leadership Programme because I wanted to learn more about the global economy, politics, and how New Zealand fit into those dimensions. For me the highlight of VILP was the chance to meet students from other fields of study and from other countries."

Alexandra Carroll

Colorado State University, USA
Study Abroad trimester in Conservation Biology

ENHANCE YOUR STUDY EXPERIENCE



STAND OUT FROM THE CROWD

Tailored Victoria International Leadership Programme (VILP)

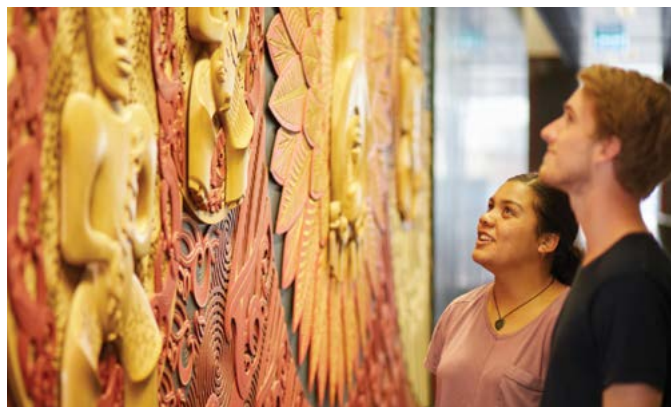
Want to enhance your knowledge on global issues? Want to improve your cross-cultural communication? Want to learn about how we can create a more sustainable future?

The Victoria International Leadership Programme is a unique and rewarding extracurricular programme aimed at advancing students' knowledge of global issues, leadership challenges, and enhancing their cross-cultural awareness.

VILP's main themes are global leadership challenges, global interconnectedness, sustainability, cross-cultural communication, and New Zealand in the world.

You'll benefit from the chance to discuss pressing global issues with a variety of students, academics, and international experts and to connect and share knowledge with the wider community. Upon completion of the tailored VILP, you will receive a certificate and a congratulatory letter.

▶ www.victoria.ac.nz/vilp



VOLUNTEER IN THE COMMUNITY

Victoria Plus Programme

Victoria Plus is a service-learning extracurricular programme that improves leadership, social responsibility, and employability skills. Make connections with other students, employers, and people in the not-for-profit sector across Wellington and gain valuable experience, broaden your thinking and learning, and reflect on your self-development throughout the programme.

Victoria Plus encourages civic engagement and community involvement, connecting you to a variety of volunteer experiences. It offers a range of workshops on skills and career development as well as a reflective ePortfolio, which can help you gain insight into your abilities and prepare you for CV writing and interviews. The Victoria Plus Programme can be completed at Certificate or Award level.

▶ www.victoria.ac.nz/victoria-plus

SPECIALISED STUDY ABROAD PACKAGES



With a Specialised Study Abroad Package, you can focus on one area of study and gain more from your study experience. You can choose at least 3 courses from 12 curated packages, across all faculties.

At the end of your Study Abroad trimester, your Specialised Study Abroad Package will be noted on your academic transcript. This acknowledges your commitment and will also enhance your employability.

To find out more about your package options, go to:

▶ www.victoria.ac.nz/study-abroad

Package specialisations

- Business
- Biotechnology and Biodiversity
- Climate, Environment, and Biodiscovery
- Creative Arts and Communication
- Data Science
- Education
- Global Studies
- Health Studies
- Language, Culture, and Identity
- New Zealand and the Pacific Islands
- Software and Computing
- Society and Ethics

STUDENT LIFE



Your Study Abroad experience is also about making new friends, enjoying the Kiwi lifestyle, and having fun! Join our vibrant campus community with students from more than 100 countries and have a study experience to remember.

SPORTS AND FITNESS

Victoria University of Wellington offers a variety of sporting facilities and competitions.

- Join the Recreation Centre for social and competitive sports leagues.
- Enjoy discount student memberships at the on-campus gym.
- Take part in a range of events and programmes, from Glow Yoga classes and Zumba parties to first aid and self-defence courses.

▶ victoria.ac.nz/recreation

ORIENTATION

Orientation at Victoria University of Wellington is called 'O Week' and is a chance to get to know the University and have fun meeting people before you start classes.

- Find out about studying and living in New Zealand at International Orientation where you will attend the compulsory Study Abroad and Exchange Orientation.
- Experience a traditional Māori pōwhiri (welcome ceremony) and city tours.
- Enjoy free food and activities on campus.

▶ www.victoria.ac.nz/international-orientation

CLUBS AND SOCIETIES

Join a sporting, cultural, social, religious, educational, professional, performing arts, or political club, group, or association. There are more than 140 to choose from. Check out the Clubs Day in the first week of each trimester.

Some of our clubs include AIKIDO, Amnesty International, Beta Alpha PSI, Capoeira, Chess, Christian Club, Conservation Biology, Connector, Cuisine, Debating, E Sports, Feminist Law Society, Fightback, Generation Zero, Handball, La Crosse, Politics Society, Ski Club, Sci-Fi, Surf Club, Theatre Students, Tramping and Hiking, Rugby, Yoga Lounge, and UniQ.

▶ victoria.ac.nz/clubs

INTERNATIONAL BUDDY PROGRAMME

The International Buddy Programme matches new international students with our current students to help ease the transition into life at the University and Wellington.

Offering a number of relaxed, socialising opportunities and events, the International Buddy Programme helps you immerse yourself into the Kiwi culture and Wellington life. It's also a great way to make friends!

▶ www.victoria.ac.nz/international-buddy

RELIGION

The University chaplains offer pastoral and practical support for all, regardless of belief. Prayer rooms are available on each campus.

▶ www.victoria.ac.nz/chaplains



"I have loved all of the opportunities that Victoria University of Wellington has given me. When it came to specifically choosing Victoria University of Wellington, I knew I wanted to find a school with a completely different atmosphere than my university back home.

"My university in New Hampshire is in a very small town, so I thought it would be interesting to experience school in a city. Wellington seemed to offer so many different opportunities and events and such a rich culture. I was originally a little sceptical, as I'm not much of a city person, but I have loved every second of it."

Emma Addison

University of New Hampshire, USA
Study Abroad trimester in Occupational Therapy



“New Zealand is the most naturally beautiful country that I have been to—it’s the perfect opportunity to engage with nature.”

“Victoria University of Wellington has interesting subjects, diverse students, and I was able to study topics I wouldn’t otherwise at my home school.”

“My favourite moments at the University were playing basketball with people from different backgrounds: Māori, Chinese, Malaysian, and others. Touring around the country with my friends was also fantastic.”

Osama Syed

Davidson College, USA

Study Abroad trimester in Political Science

FACILITIES AND SERVICES

Victoria University of Wellington has a comprehensive range of facilities and student services to help you succeed academically, to support you during your studies, and to help you have the best possible student experience.

-  **free arrival meeting service**
-  **international student services team (including visa and insurance officers)**
-  **accommodation service**
-  **recreation centre and gym**
-  **religious support**
-  **student health and counselling services**
-  **disability services**
-  **financial advice and support**
-  **UniQ—queer at the university**
-  **more than 140 student clubs and societies**



LIVING COSTS

Your living costs will depend on your needs and habits. For 20 weeks (one trimester) in Wellington, you might need:

- **Essential living costs** (keeping it basic but comfortable): NZD\$9,000
- **Generous living costs** (weekend trips and enjoying the nightlife): NZD\$13,000



Wellington bus service (University to city) NZD\$2.50 / with Snapper card student discount NZD\$1.28 / between campuses **FREE**



Cable car (University to city) NZD\$2



Coffee NZD\$4.50



Swimming pool entry NZD\$6



Cinema ticket NZD\$10–\$18



Mobile phone plan from NZD\$20 per month



Museum of New Zealand Te Papa Tongarewa entry **FREE**



Sports/gym/club NZD\$40 per month



Take-away meal NZD\$7–\$20

Costs are approximate and can vary.

To find out your likely living and study costs, go to

 www.victoria.ac.nz/cost-calculator

ACCOMMODATION



Victoria University of Wellington has a range of accommodation options to suit your style of living.

Our halls of residence provide a safe, comfortable, and supportive living environment. Most University accommodation is within walking distance from each campus and the city centre.

APPLICATION DEADLINES

University accommodation is guaranteed for all international students who apply by the deadline. To secure your place in your preferred University accommodation, we recommend you apply for accommodation at the same time as you apply to study at the University or earlier.

	APPLICATIONS OPEN	APPLICATIONS CLOSE	APPLICANTS NOTIFIED
Trimester 1 (March)	1 August	15 September	From mid-October
Trimester 2 (July)	1 April	1 May	From mid-May

Students might not be placed in one of their initial accommodation choices. Applications received after these dates will be placed on the waitlist and considered once places become available.

Students applying through a Study Abroad provider must contact that provider for details on the accommodation application process deadlines, as special arrangements may have been made between them and Victoria University of Wellington.

To find out more, go to:

► www.victoria.ac.nz/international-accommodation



TE PUNI VILLAGE



A multi-level complex on Kelburn campus with stunning views from its communal areas

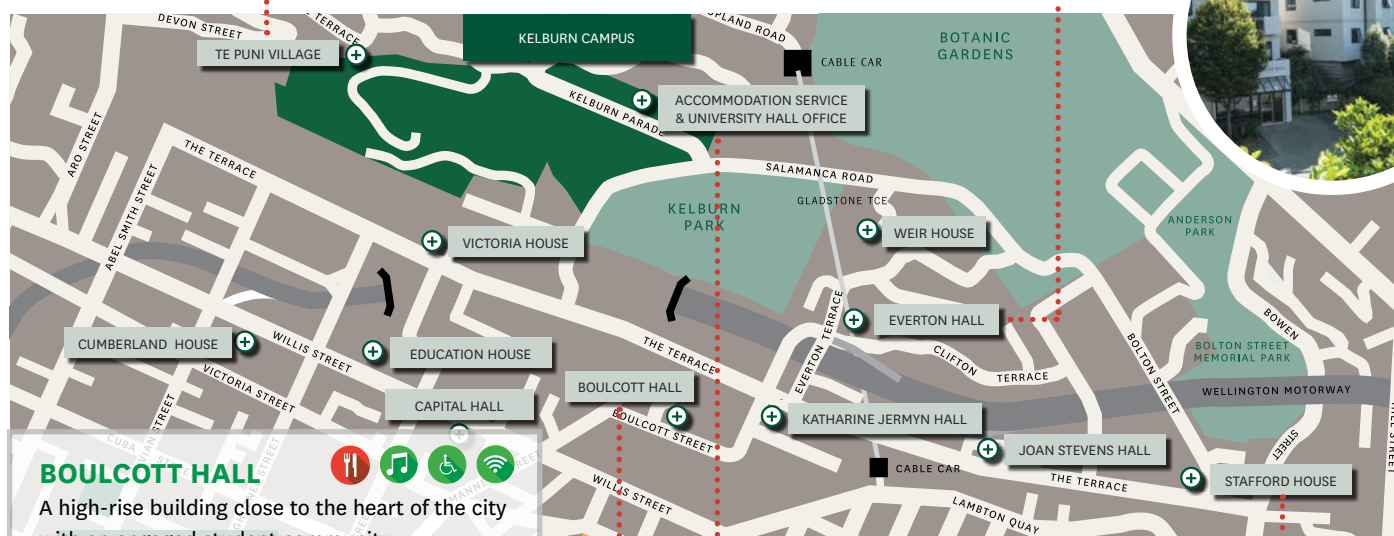
- Single, apartment single, or single studio
- From NZ\$392 per week
- 2–25 minutes to walk to each campus

EVERTON HALL



A pleasant hillside setting beside the cable car for non-first-year students

- 5-bedroom apartments with single and double rooms
- From NZ\$210 plus electricity
- 5–20 minutes to walk to each campus



BOULCOTT HALL



A high-rise building close to the heart of the city with an engaged student community

- Single rooms
- From NZ\$392 per week
- 10–15 minutes to walk to each campus

UNI HALL—TE KOTAHINGA



Furnished self-contained houses close to Kelburn campus for non-first-year international students

- House with single or twin-share rooms
- From NZ\$275 per week
- 5–30 minutes to walk to each campus



STAFFORD HOUSE



Apartment living in the heart of Wellington's lively business and government district

- Single room in a 2- or 3-bedroom apartment
- From NZ\$270 per week plus electricity
- 3–20 minutes to walk to each campus

KEY:

- Catered: meals will be provided
- Self-catered: you will prepare your own meals
- Exercise or games area
- Music room
- Disabled access
- Free wireless internet. Heavy internet use may cost extra in some halls.
- Weekly fee, including most utilities. Fees are subject to change and may vary for 2020

STUDY ABROAD OR EXCHANGE ?

If your home university has a formal exchange agreement with Victoria University of Wellington, you may be able to apply as an exchange student. Go to our website for a full list of exchange partner universities and talk to your home university study abroad or exchange coordinator.

▶ www.victoria.ac.nz/student-exchange-partners

KEY DATES

ACADEMIC YEAR	APPLICATION DEADLINE
Trimester 1 March–July	1 December of the previous year
Trimester 2 July–November	1 May

International Orientation is held the week before classes start. Each trimester has a two-week midterm break. To find out more, go to:

▶ www.victoria.ac.nz/international-deadlines

APPLY NOW !

- You can find step-by-step instructions, entry requirements, and important information at www.victoria.ac.nz/study-abroad
- If you are applying as an exchange student, please visit your home university's international office to assist you with submitting your application.
- If you would like additional assistance with your application, you may like to apply through one of our overseas representatives: www.victoria.ac.nz/agent

If you need help with the process, or have any questions, contact victoria-international@vuw.ac.nz

ENTRY REQUIREMENTS

Successful completion of at least one year of a Bachelor's degree or equivalent, with average or above average grades. If you have just finished secondary school, you may be eligible for admission through our First Year Abroad programme, depending on your high school results.

English-language requirements

If you are from a non-English speaking institution, you must provide evidence of English proficiency. Some exceptions apply.

▶ www.victoria.ac.nz/study-abroad

FIRST YEAR ABROAD

If you have just finished secondary school, are in your first year of university, or don't want to commit to a long-term degree, you can still choose to study abroad and earn credit at Victoria University of Wellington. You can select three or four first-year courses and gain a basic introduction to a variety of subjects.

SCHOLARSHIPS FOR STUDY ABROAD

These scholarships are available to students in the Study Abroad programme:

- Victoria University of Wellington Study Abroad Scholarship
- Gilman Scholarships
- Go Overseas New Zealand Study Abroad Scholarship
- Generation Study Abroad Excellence and Travel Awards

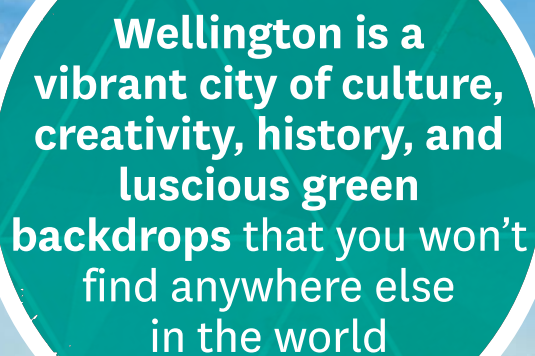
GRADUATE FEES WAIVER FOR ALUMNI

After a trimester of study at Victoria University of Wellington, international Study Abroad and Exchange students will join our global alumni community and will be eligible for our Global Alumni Graduate Fees Waiver. This will give you a discount of up to 20 percent off full-time tuition fees for taught postgraduate programmes at Victoria University of Wellington.

Check out our website for more information on this waiver and other available scholarships:

▶ www.victoria.ac.nz/international-scholarships





Wellington is a vibrant city of culture, creativity, history, and luscious green backdrops that you won't find anywhere else in the world

CONTACT US

Victoria International

+64 4 463 5350

victoria-international@vuw.ac.nz

www.victoria.ac.nz/international

FOLLOW US ON SOCIAL MEDIA

www.facebook.com/VUWInternational

www.twitter.com/VicUniWgtn

www.instagram.com/vicuniwgtn

www.linkedin.com/school/victoria-university-of-wellington

WATCH OUR VIDEOS

www.youtube.com/vuwinternational

CODE OF PRACTICE

Victoria University of Wellington is a signatory to the Education (Pastoral Care of International Students) Code of Practice 2016 (the Code). Published by the New Zealand Ministry of Education and administered by the New Zealand Qualifications Authority (NZQA), the Code is designed to ensure international students are well informed, safe, and properly cared for. You can read about the Code and the University's obligations to you at www.nzqa.govt.nz/the-code.

© Victoria University of Wellington, 2019

Victoria University of Wellington uses all reasonable skill and care to ensure the information contained in this document is accurate at the time of print. However, matters covered by this document are subject to change due to a continuous process of review and to unanticipated circumstances.

The University therefore reserves the right to make any changes without notice. So far as the law permits, the University accepts no responsibility for any loss suffered by any person due to reliance (either in whole or in part) on the information contained in this document, whether direct or indirect, and whether foreseeable or not.