

WANG CENTER FOR GLOBAL AND COMMUNITY ENGAGED EDUCATION

GATEWAY AND FEATURED STUDY AWAY PROGRAMS

2022-23

Gain the knowledge and
experience required to thrive
in a complex world

PIU

ABOUT US

The Wang Center for Global and Community Engaged Education was established in 2002 thanks to the vision of donors Peter ('60) and Grace Wang. Working collaboratively with academic units and disciplines of Pacific Lutheran University, the Wang Center supports faculty, students and staff with resources that advance PLU's distinction and vision for global education of "educating to achieve a just, healthy, sustainable and peaceful world both locally and globally." The Wang Center offers faculty development and grant opportunities, short- and long-term study away programs, on-campus programming on pressing world issues, and is committed to best practices when engaging with educational partners, both locally and globally.

PLU GATEWAY PROGRAMS

BØ, NORWAY	5
Business, Environmental Studies, Kinesiology, Natural Sciences and Nordic Studies	
CHENGDU, CHINA	6
Continuity and Change in a World Power	
OAXACA, MEXICO	9
Development, Culture, Environment and Social Change in Mexico	
OSLO, NORWAY	10
Peace and Conflict Studies	
IHON-OXFORD, ENGLAND	11
International Honors Program	
TRINIDAD AND TOBAGO	12
Heritage, Cultural Fusion and Sustainability in the Southern Caribbean	
VESTFOLD, NORWAY	13
Kinesiology in Norway	
WINDHOEK, NAMIBIA	14
Cultural Immersion for Education, Natural and Social Sciences	



@wang.center



@PLUWangCenter



fb.com/pluwangcenter

plu.edu/studyaway

PLU GATEWAY AND FEATURED STUDY AWAY PROGRAMS

At PLU, global engagement is a high priority, and many students choose to deepen their understanding of our globalized, interconnected world through short-term, semester, or year-long study away. In fact, over the last 15 years, PLU students have studied away in over 80 countries. For students seeking a semester-long opportunity, PLU offers seven signature Gateway programs, Featured programs in over 20 locations across the globe and a range of Approved programs. Whether you are seeking the right fit for your academic program or the perfect internship to prepare for your future career, PLU semester programs have plenty to offer!

Studying away for a semester requires planning and preparation. As you begin your study away journey, you can access the support and guidance of the Study Away Advisor/Wang Center staff, faculty advisors, Gateway Program Directors, Student Financial Services Specialists, and partner institutions to select a program that meets your academic, professional, and personal goals.

THE WANG CENTER FOR GLOBAL AND COMMUNITY ENGAGED EDUCATION seeks to bring diverse individuals together to learn from one another in off-campus global and local settings and through programming focused on pressing world issues. In addition to strategic and ethical outreach, we aim to provide guidance, support, and resources to foster an inclusive environment for PLU students, faculty and staff members of all backgrounds and identities to reach that goal.

EXAMINE GLOBAL ISSUES

Engage with interconnected global issues related to human diversity, social justice and the fragility of our planet as they impact specific communities, regions and nations both abroad and at home.

ACQUIRE SKILLS TO LIVE, LEARN AND WORK IN A GLOBAL CONTEXT

Develop the cross-cultural and language skills to navigate diverse and interdependent communities in a range of fields and professions. Engage with community, nonprofit and government leaders through homestays or student housing abroad, study tours and opportunities to engage in independent research, an internship or a service-learning project.

INTEGRATE ACADEMIC, CAREER AND PERSONAL GOALS

Expand the knowledge, skills and contacts made during your study away experience in your Senior Capstone project, Wang Center Research Grant application, local internship opportunities, in your Peace Corps, Fulbright and graduate school applications, or in seeking meaningful employment opportunities upon graduation.

WHY STUDY AWAY?



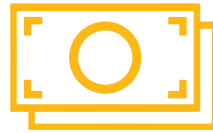
HEALTH AND SAFETY

The health, safety and well being of PLU students, staff and faculty participating in Wang Center programs is our primary concern. PLU and the Wang Center are committed to maximizing safety at each program site, making every effort to ensure that participants have the resources and information they need for a safe and successful global education experience.



WHAT'S INCLUDED?

The cost for PLU Gateway and Featured programs is the PLU comprehensive fee (tuition, room and board and student fees). Financial aid and scholarships apply.



TUITION



HOUSING



EMERGENCY
INSURANCE



VISA FEE*



MEALS



STUDY TOURS**

NOT INCLUDED

Air travel for Featured and Approved / Personal excursions /
Books & supplies / Some Featured and
Approved program excursions

* Gateway programs cover full visa fee, Featured up to
\$300 of visa fee

** Tours vary by program; see website or contact the
advisor for details

See
plu.edu/studyaway/funding
to explore study away
scholarships!



GATEWAY & FEATURED SEMESTER PROGRAMS

Gateway study away programs are uniquely designed and administered in partnership with PLU faculty. Featured Programs, administered by partner institutions, align with our mission and typically have a long history of PLU student participation and ties to PLU.

Click here to explore semester programs!



TAKE THE NEXT STEP

1. EXPLORE

PLU offers a wide range of study away options to meet the needs of students across academic disciplines. Challenge yourself to live and learn outside of your comfort zone for a semester or year.

DISCOVER YOUR OPTIONS

- Browse programs at plu.edu/studyaway
- Attend the Study Away Fair
- Sign up to learn about upcoming events at plu.edu/studyaway/interested

2. EVALUATE

NARROW YOUR OPTIONS BY CONSIDERING

- Fit with academic program & location
- Fit with personal and professional goals
- Availability of service learning and internship opportunities

UTILIZE CAMPUS RESOURCES

- Talk with Student Global Ambassadors at global.ambassadors@plu.edu
- Meet with the Study Away Advisor
- Meet the Gateway Program Director
- Discuss your plans with your Academic Advisor
- Complete your FAFSA (financial aid, gift aid & scholarships apply toward program costs)
- Check out student stories at plu.edu/studyaway/student-stories

3. APPLY

SEMESTER STUDY AWAY APPLICATION INCLUDES

- Short essays
- Faculty Recommendation Form
- Professional Recommendation Form (Gateway)
- Non-refundable \$50 Application Fee
- Advising appointment plu.edu/studyaway/advising

APPLY FOR FUNDING

Visit plu.edu/studyaway/funding for a list of scholarships

APPLICATION DEADLINE

Fall '22, Spring '23 or Full Year '22-'23: **March 15, 2022**

Applications open in November during International Education Week.

APPLY at studyaway.plu.edu

4. PREPARE

LEARN ABOUT HEALTH AND SAFETY, LOGISTICS AND CULTURAL PREPARATION

- Research your host destination and culture
- Attend all mandatory pre-departure orientations to learn about logistics, prepare for health and safety and cultural transitions
- Apply for a visa (when applicable) with support from the Wang Center (Gateway) or your program provider (Featured)

5. SOJOURN

- While away, take full advantage of the opportunities your program and host culture provide. Challenge your perspective!
- Share stories and photos of your experiences *#LutesAway*

6. REFLECT

REFLECT, CLARIFY AND INTEGRATE YOUR EXPERIENCES INTO YOUR PLU CAREER AND BEYOND

Join **Wang Center Returner Events** to explore how you can integrate your study away experience with your academic, professional, and personal goals.

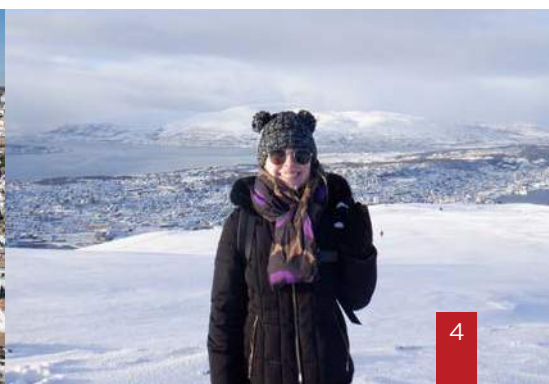
Apply to be a **Wang Center Global Ambassador** and promote global education on campus.

Develop an international independent research project and apply for **Wang Center Research Grant** funding.

Consider enrolling in PLU's **Peace Corps Prep Certificate Program** to get a head start on preparing to serve in the non-profit sector at home or abroad.

Look into opportunities to get involved with service learning in the local community here in Parkland.

Talk with **Alumni & Student Connections** about local internships, the post-PLU career search process, Peace Corps, Fulbright, graduate school or post-graduate volunteer or teach abroad programs.





Business, Environmental Studies,
Kinesiology, Natural Sciences and
Nordic Studies



SEMESTER OFFERED

Fall, Spring, Academic Year

PREREQUISITES

Open to sophomores, juniors or seniors in good standing; 2.7 minimum GPA (3.0 preferred)

DURATION

August to December for Fall, January to June for Spring, August to June for Academic Year

CREDIT

15-17 credits

PROGRAM BASE

Bø, Norway

HOUSING

Student residence hall, double room with bathroom

LANGUAGE OF INSTRUCTION

English

PROGRAM HIGHLIGHTS

- ★ Engage in an active campus community at the University of Southeastern Norway and experience the local natural landscape as an extension of classroom learning
- ★ Live and learn in an environment that challenges cultural assumptions and helps you to see your discipline and the world through a Norwegian lens
- ★ Explore Telemark, a region known as “Norway in miniature” and known for its rich cultural tradition and outdoor life
- ★ Focus on Business, Environmental Studies, Kinesiology, Marketing and Management, Natural Sciences or Norwegian Language and Literature

PROGRAM DIRECTOR

Dr. Charlie Katica

*Assistant Professor of Kinesiology
Director, USN Program
katicacp@plu.edu
253-535-7363*

PROGRAM MANAGER

Megan Grover

*Associate Director of Study Away & Semester
Program Manager
megan.grover@plu.edu
253-535-8754*



CHENGDU

Continuity and Change in a
World Power



PROGRAM HIGHLIGHTS

- ★ Study at Sichuan University, one of China's most prestigious universities, with students from all over China and the world
- ★ Develop your Chinese language abilities with courses available at all levels
- ★ Engage with local communities through study tours to rural farms, local villages and nearby monuments
- ★ Deepen your understanding of the various cultures of China through study tours to the Forbidden City, the Great Wall in Beijing, and Xi'an, whose famous Terracotta Warriors and Wild Goose Pagoda are reminders of China's prominence in the world as the eastern terminus of the Silk Road
- ★ Experience Tibetan culture with a week-long study tour exploring Buddhist temples and shrines, contrasting with China's ethnic Han majority

PROGRAM DIRECTOR

Dr. Paul Manfredi
Prof. of Chinese
manfredi@plu.edu
253-535-7216

PROGRAM MANAGER

Megan Grover
*Associate Director of
Study Away & Semester
Program Manager*
megan.grover@plu.edu
253-535-8754



SEMESTER OFFERED

Fall, Academic Year

PREREQUISITES

Open to sophomores, juniors or seniors in good standing; 2.7 minimum GPA (3.0 preferred)

DURATION

August to December for Fall; August to May or July for Academic Year

CREDIT

12-18 credits

PROGRAM BASE

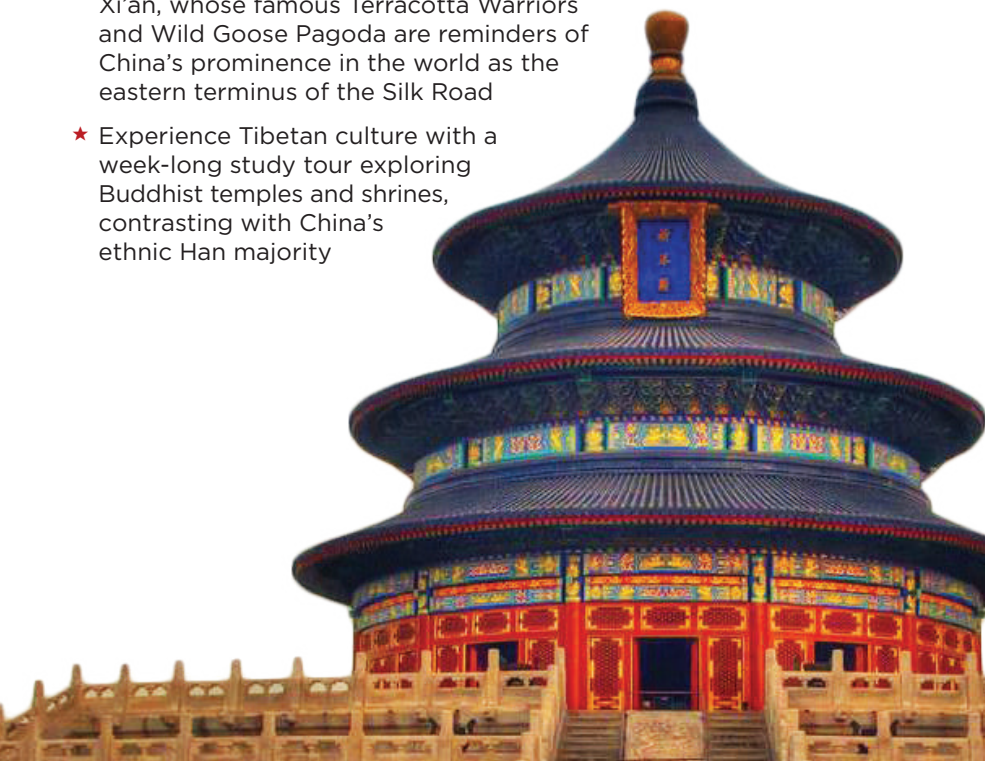
Chengdu, China

HOUSING

International student residence hall, double rooms with bathroom

LANGUAGE OF INSTRUCTION

English, Chinese (language courses only)



OAXACA

Development, Culture, Environment
and Social Change in Mexico



SEMESTER OFFERED

Fall

PREREQUISITES

Open to sophomores, juniors or seniors in good standing; 3.0 minimum GPA; 4-5 semesters of college-level Spanish or the equivalent

DURATION

Mid-August to mid-December, 17 weeks divided into three sessions

CREDIT

16-17 credits

PROGRAM BASE

Oaxaca City, Mexico

HOUSING

Homestay

LANGUAGE OF INSTRUCTION

Spanish

PROGRAM DIRECTOR

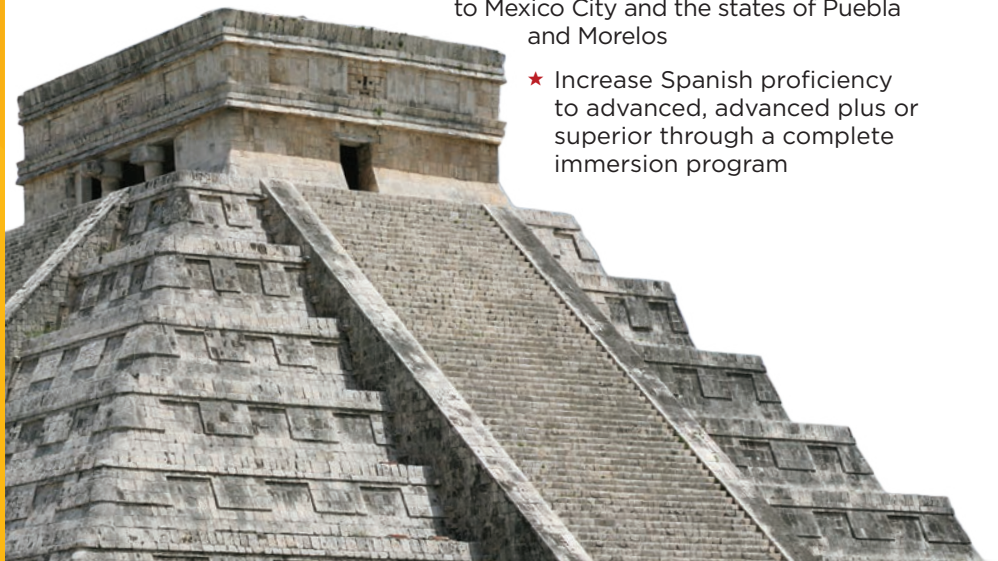
Dr. Tamara R. Williams
*Prof. of Hispanic Studies
Executive Director,
Wang Center
williatr@plu.edu
253-535-7678*

PROGRAM MANAGER

Megan Grover
*Associate Director of
Study Away & Semester
Program Manager
megan.grover@plu.edu
253-535-8754*

PROGRAM HIGHLIGHTS

- ★ Explore Mexican history, development, society and environment through an interdisciplinary view of Ancient, Modern, and Contemporary Mexico
- ★ Learn about U.S.-Mexico relations and gain an in-depth perspective of Mexican immigration to — and the hispanization of — the United States
- ★ Experience approaches to, and strategies for, social change, and the value placed on these processes by diverse groups in the Oaxaca region and across Mexico
- ★ Integrate academic knowledge and intercultural skills in an internship with a local nonprofit organization focused on an issue related to your academic, personal or professional goals
- ★ Build knowledge of pressing issues facing Mexico today through extended study tours to Mexico City and the states of Puebla and Morelos
- ★ Increase Spanish proficiency to advanced, advanced plus or superior through a complete immersion program





OSLO

Peace and Conflict Studies

PROGRAM HIGHLIGHTS

- ★ Challenge the perception of the “sameness” of Western societies by experiencing the rapidly changing Norwegian culture and society and Norway’s active engagement in defining and redefining its roles internationally and within its borders
- ★ Examine the Norwegian approach to contemporary issues in a central location with engaged faculty whose specialties include Peace and Conflict Studies, African Studies, International Relations, Middle East Studies, Political Theory and more
- ★ Study in English alongside Norwegians majoring in Peace & Conflict and International Studies
- ★ Immerse yourself in Norwegian culture, history, geography, society, and politics with the “Norway—An Introduction” course (not for credit) that includes excursions in and around Oslo

PROGRAM DIRECTOR

Dr. Ami V. Shah
Assistant Professor of Anthropology & Global Studies
shahav@plu.edu
253-535-7687

PROGRAM MANAGER

Megan Grover
Associate Director of Study Away & Semester Program Manager
megan.grover@plu.edu
253-535-8754



SEMESTER OFFERED

Fall

PREREQUISITES

Open to sophomores, juniors or seniors in good standing; 2.7 minimum GPA (3.0 preferred)

DURATION

August to December

CREDIT

16 credits

PROGRAM BASE

Oslo, Norway

HOUSING

Student housing, single room with bathroom, shared kitchen

LANGUAGE OF INSTRUCTION

English



IHON-OXFORD

International Honors Program



SEMESTER OFFERED

Fall or Spring

PREREQUISITES

Open to sophomores, juniors or seniors in good standing; 3.0 minimum GPA

Program designed for IHON students, but some non-IHON students may be admitted on a space-available basis, particularly in Fall semester

DURATION

Mid-August to December for Fall, February to mid-June for Spring

CREDIT

16 credits

PROGRAM BASE

Oxford, England

HOUSING

Private room within shared PLU student house

LANGUAGE OF INSTRUCTION

English

PROGRAM DIRECTOR

Dr. Arthur Strum

Resident Assistant Professor, Multi-Disciplinary Programs

strumac@plu.edu
253-535-8774

PROGRAM MANAGER

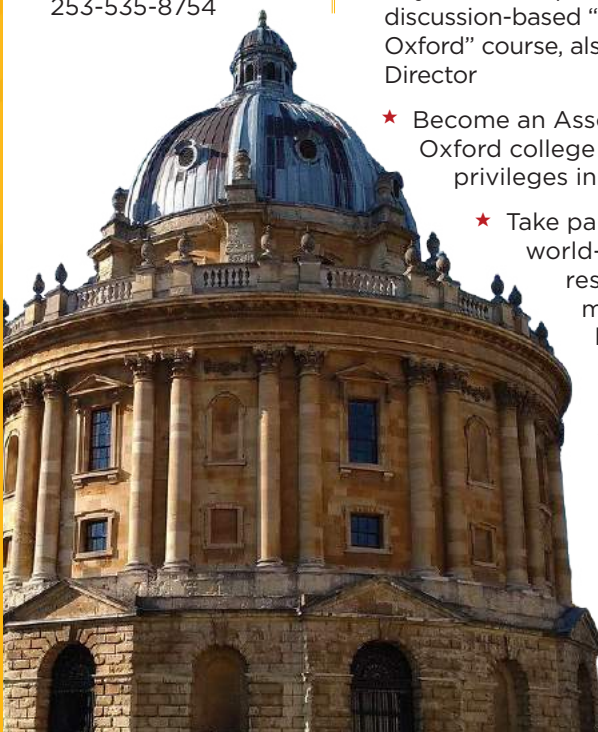
Megan Grover

Associate Director of Study Away & Semester Program Manager

megan.grover@plu.edu
253-535-8754

PROGRAM HIGHLIGHTS

- ★ Experience the “Oxford tutorial” — weekly one-on-one sessions with Oxford faculty and graduate students, aimed at bringing forth the students’ own powers of judgment, thought, and argumentation
- ★ Learn to “read” the United Kingdom through the disciplinary lens of the semester’s Site Director — a PLU-IHON faculty member who will teach a place-based 200-level seminar and lead you on study tours in London, Manchester and other sites
- ★ Apply what you’re reading and learning to your own experiences in the 4-credit, discussion-based “Living and Learning in Oxford” course, also led by the PLU Site Director
- ★ Become an Associate Member of an Oxford college with dining and other privileges in the college
- ★ Take part in induction into the world-renowned Bodleian research library, including more than 20 Oxford branches, where you have full research access and reading privileges
- ★ Complete two of your 200-level IHON seminars — one in the form of an interdisciplinary tutorial with Oxford faculty and graduate students, the other with the PLU Site Director



TRINIDAD & TOBAGO

Heritage, Cultural Fusion and Sustainability in the Southern Caribbean



PROGRAM HIGHLIGHTS

- ★ Gain an in-depth understanding of Trinbagonian culture through a required set of three PLU-designed courses taught by local professors, local experts and US professors
- ★ Examine key issues such as post-colonialism, globalization, diversity, equity, social justice, gender and environmental sustainability in a rich, ethnically diverse culture
- ★ Study at University of the West Indies, a major research institution in the Caribbean, and engage with local students
- ★ Engage with the rich cultural, environmental, religious and artistic diversity of Trinidad & Tobago through a series of study tours and lectures that facilitate student participation in Trinidad's expressions of the Hindu spring festival of Phagwa, the West African Orisha and Shouter Baptist festivals, the Muslim Hosay commemoration, and the world famous Trinidad Carnival
- ★ Experience the traditional fishing village of Charlotteville, Tobago, as it explores new directions in organic gardening, marine research, and sustainable tourism

PROGRAM DIRECTOR THROUGH DECEMBER 2021:

Dr. Greg Youtz
Professor of Music
youtzg1@plu.edu
253-535-7619

BEGINNING JANUARY 2022:

Dr. Michael Behrens
Professor of Biology
behrenmd@plu.edu
253-535-7565

PROGRAM MANAGER

Megan Grover
Associate Director of Study Away & Semester Program Manager
megan.grover@plu.edu
253-535-8754

TRINIDAD & TOBAGO



SEMESTER OFFERED

Spring (Includes J-Term course)

PREREQUISITES

Open to sophomores, juniors or seniors in good standing; 2.7 minimum GPA (3.0 preferred)

DURATION

January to May, 20 weeks

CREDIT

19-21 credits

PROGRAM BASE

St. Augustine, Trinidad and Tobago

HOUSING

University of the West Indies dormitory, double rooms

LANGUAGE OF INSTRUCTION

English



VESTFOLD

Kinesiology in Norway



PROGRAM DIRECTOR

Dr. Charlie Katica
Assistant Professor of Kinesiology
Director, USN Program
katicacp@plu.edu
253-535-7363

PROGRAM MANAGER

Megan Grover
Associate Director of Study Away & Semester Program Manager
megan.grover@plu.edu
253-535-8754

PROGRAM HIGHLIGHTS

- ★ Engage in an active campus community at the University of Southeastern Norway and experience the local natural landscape as an extension of classroom learning
- ★ Focus on Kinesiology in the Exercise and Health Management program
- ★ Examine the Norwegian health system and work life and social laws regulating health and sick leave through project management development and apprenticeship
- ★ Live and learn in an environment that challenges cultural assumptions and helps you to see your discipline and the world through a Norwegian lens
- ★ Put theoretical components into practice at the Vestfold campus' gym and pool facilities or in the stunning natural setting with numerous outdoor recreation options

SEMESTER OFFERED

Fall, Spring, Academic Year

PREREQUISITES

Open to sophomores, juniors or seniors in good standing; 2.7 minimum GPA (3.0 preferred)

DURATION

August to December for Fall, January to June for Spring, August to June for Academic Year

CREDIT

15-17 credits

PROGRAM BASE

Vestfold, Norway

HOUSING

Student residence hall, double room with bathroom

LANGUAGE OF INSTRUCTION

English



WINDHOEK

Cultural Immersion for Education,
Natural Sciences, and Social Sciences

PROGRAM HIGHLIGHTS

- ★ Study at the premier University of Namibia alongside students from Namibia and countries across Africa and the globe
- ★ Engage in a practicum in a local school and complete a robust set of courses aligned with PLU's program requirements (Education students)
- ★ Learn about this young democratic country with a focus on a historical perspective of Namibia from colonization to democracy
- ★ Engage with indigenous people, cultures, and the country's unique geography on study tours, through rural homestays in the villages of northern Namibia and visits to Namibia's renowned national parks and game reserves
- ★ Create your own batik art in a 3-day workshop in Windhoek
- ★ Engage with the local community through an internship or volunteer work with community organizations
- ★ Spend January enrolled in a context-setting, intensive course on non-Western history taught by a local Namibia historian

PROGRAM DIRECTOR

Dr. Jan Weiss
*Associate Dean
Associate Professor of
Education*
weissjm@plu.edu
253-535-7282

PROGRAM MANAGER

Megan Grover
*Associate Director of
Study Away & Semester
Program Manager*
megan.grover@plu.edu
253-535-8754



SEMESTER OFFERED

Spring (Includes J-Term course)

PREREQUISITES

Open to sophomores, juniors or seniors in good standing; 2.7 minimum GPA (3.0 preferred)

DURATION

January to May, 20 weeks

CREDIT

17-18 credits

PROGRAM BASE

Windhoek, Namibia

HOUSING

University of Namibia on-campus housing complex, double rooms

LANGUAGE OF INSTRUCTION

English



STUDY AWAY AT PLU

ALIGNED with PLU mission

INTEGRATED with curriculum
and university systems

RESPONSIVE to academic,
professional and personal goals
and needs

ACCESSIBLE to students of all
financial backgrounds

INCLUSIVE programs provide
immersion experiences for all
students



**WANG CENTER FOR GLOBAL AND
COMMUNITY ENGAGED EDUCATION**
PACIFIC LUTHERAN UNIVERSITY

12180 PARK AVENUE SOUTH
TACOMA, WA 98447-0003
253-535-7577

plu.edu/wangcenter