

WANG CENTER FOR GLOBAL AND COMMUNITY ENGAGED EDUCATION

# GATEWAY AND FEATURED STUDY AWAY PROGRAMS

2023-24



Gain the **knowledge and  
experience** required to thrive  
in a complex world

PLU



# ABOUT US

**The Wang Center for Global and Community Engaged Education** was established in 2002 thanks to the vision of donors Peter ('60) and Grace Wang. Working collaboratively with academic units and disciplines of Pacific Lutheran University, the Wang Center supports faculty, students and staff with resources that advance PLU's distinction and vision for global education of "educating to achieve a just, healthy, sustainable and peaceful world both locally and globally." The Wang Center offers faculty development and grant opportunities, short- and long-term study away programs, on-campus programming on pressing world issues, and is committed to best practices when engaging with educational partners, both locally and globally.

## PLU GATEWAY PROGRAMS

<b>BØ, NORWAY</b> .....	5
Business, Environmental Studies, Kinesiology, Natural Sciences and Nordic Studies	
<b>CHENGDU, CHINA</b> .....	6
Continuity and Change in a World Power	
<b>OAXACA, MEXICO</b> .....	9
Development, Culture, Environment and Social Change in Mexico	
<b>OSLO, NORWAY</b> .....	10
Peace and Conflict Studies	
<b>IHON-OXFORD, ENGLAND</b> .....	11
International Honors Program	
<b>TRINIDAD AND TOBAGO</b> .....	12
Heritage, Cultural Fusion and Sustainability in the Southern Caribbean	
<b>VESTFOLD, NORWAY</b> .....	13
Kinesiology in Norway	
<b>WINDHOEK, NAMIBIA</b> .....	14
Cultural Immersion for Education, Natural and Social Sciences	



@wang.center



@PLUWangCenter



fb.com/pluwangcenter

[plu.edu/studyaway](http://plu.edu/studyaway)

## PLU GATEWAY AND FEATURED STUDY AWAY PROGRAMS

At PLU, global engagement is a high priority, and many students choose to deepen their understanding of our globalized, interconnected world through short-term or semester study away. In fact, over the last 15 years, PLU students have studied away in over 80 countries. For students seeking a semester-long opportunity, PLU offers seven signature Gateway programs, Featured programs in over 20 locations across the globe and a range of Approved programs. Whether you are seeking the right fit for your academic program or the perfect internship to prepare for your future career, PLU semester programs have plenty to offer!

Studying away for a semester requires planning and preparation. As you begin your study away journey, you can access the support and guidance of the Study Away Advisor/Wang Center staff, faculty advisors, Gateway Program Directors, Student Financial Services Specialists, and partner institutions to select a program that meets your academic, professional, and personal goals.

**THE WANG CENTER FOR GLOBAL AND COMMUNITY ENGAGED EDUCATION** seeks to bring diverse individuals together to learn from one another in off-campus global and local settings and through programming focused on pressing world issues. In addition to strategic and ethical outreach, we aim to provide guidance, support, and resources to foster an inclusive environment for PLU students, faculty and staff members of all backgrounds and identities to reach that goal.

## EXAMINE GLOBAL ISSUES

Engage with interconnected global issues related to human diversity, social justice and the fragility of our planet as they impact specific communities, regions and nations both abroad and at home.

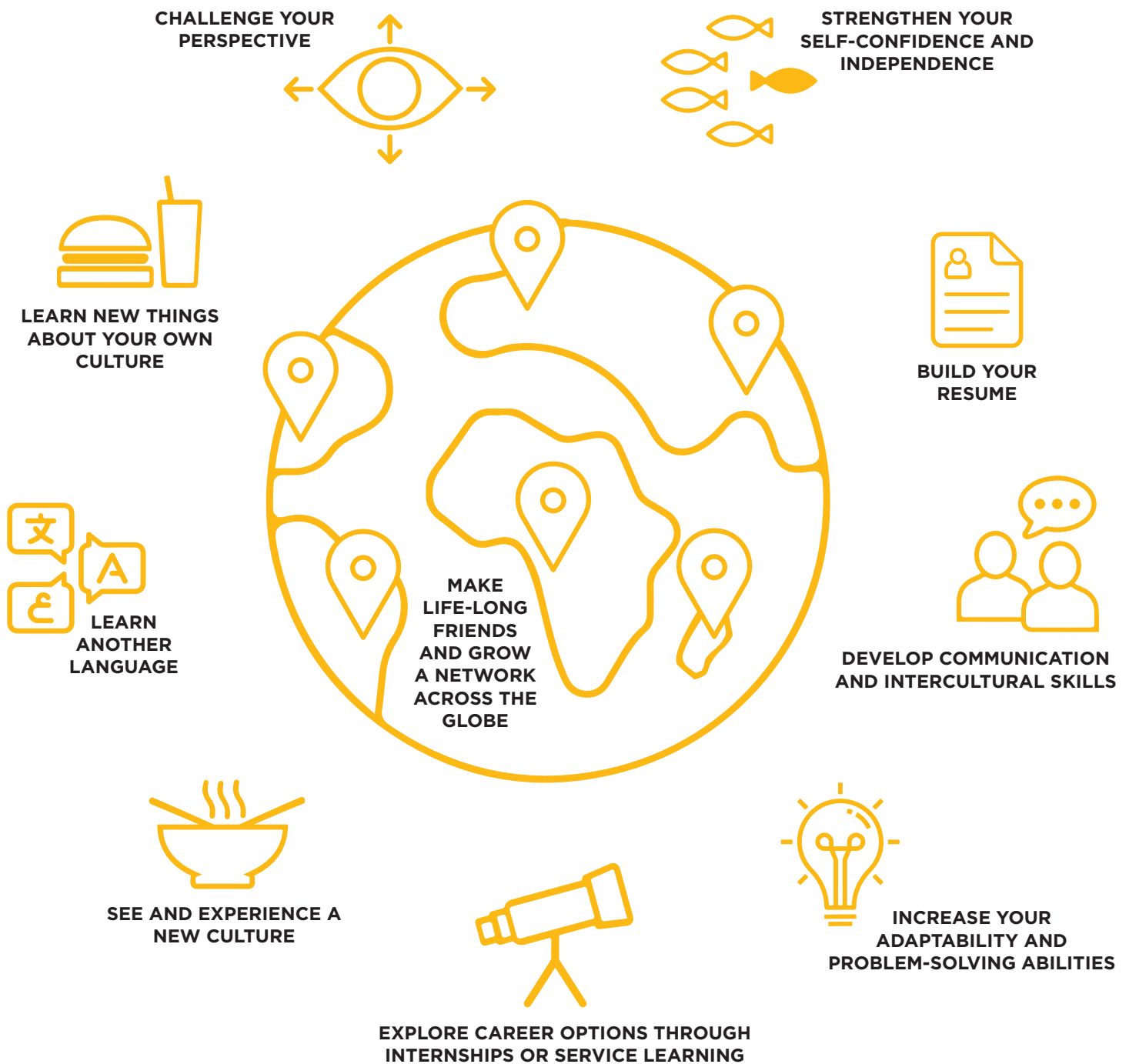
## ACQUIRE SKILLS TO LIVE, LEARN AND WORK IN A GLOBAL CONTEXT

Develop the cross-cultural and language skills to navigate diverse and interdependent communities in a range of fields and professions. Engage with community, nonprofit and government leaders through homestays or student housing abroad, study tours and opportunities to engage in independent research, an internship or a service-learning project.

## INTEGRATE ACADEMIC, CAREER AND PERSONAL GOALS

Expand the knowledge, skills and contacts made during your study away experience in your Senior Capstone project, Wang Center Research Grant application, local internship opportunities, in your Peace Corps, Fulbright and graduate school applications, or in seeking meaningful employment opportunities upon graduation.

# WHY STUDY AWAY?



## HEALTH AND SAFETY

The health, safety and well being of PLU students, staff and faculty participating in Wang Center programs is our primary concern. PLU and the Wang Center are committed to maximizing safety at each program site, making every effort to ensure that participants have the resources and information they need for a safe and successful global education experience.



# WHAT'S INCLUDED?

The cost for PLU Gateway and Featured programs is the PLU comprehensive fee (tuition, room and board and student fees). Financial aid and scholarships apply.



TUITION



HOUSING



EMERGENCY  
INSURANCE



VISA FEE\*



MEALS



STUDY TOURS\*\*

## NOT INCLUDED

Air travel for Featured and Approved / Personal excursions /  
Books & supplies / Some Featured and  
Approved program excursions

\* Gateway programs cover full visa fee, Featured up to \$300 of visa fee

\*\* Tours vary by program; see website or contact the advisor for details

See  
[plu.edu/studyaway/funding](http://plu.edu/studyaway/funding)  
to explore study away  
scholarships!





# TAKE THE NEXT STEP

## 1. EXPLORE

PLU offers a wide range of study away options to meet the needs of students across academic disciplines. Challenge yourself to live and learn outside of your comfort zone for a semester.

### DISCOVER YOUR OPTIONS

- Browse programs at [plu.edu/studyaway](https://plu.edu/studyaway)
- Attend the Study Away Fair
- Sign up to learn about upcoming events at [plu.edu/studyaway/interested](https://plu.edu/studyaway/interested)

## 2. EVALUATE

### NARROW YOUR OPTIONS BY CONSIDERING

- Fit with academic program & location
- Fit with personal and professional goals
- Availability of service learning and internship opportunities

### UTILIZE CAMPUS RESOURCES

- Talk with Student Global Ambassadors at [global.ambassadors@plu.edu](mailto:global.ambassadors@plu.edu)
- Meet with the Study Away Advisor
- Meet the Gateway Program Director
- Discuss your plans with your Academic Advisor
- Complete your FAFSA (financial aid, gift aid & scholarships apply toward program costs)
- Check out student stories at [plu.edu/studyaway/student-stories](https://plu.edu/studyaway/student-stories)

## 3. APPLY

### SEMESTER STUDY AWAY APPLICATION INCLUDES

- Short essays
- Faculty Recommendation Form
- Professional Recommendation Form (Gateway)
- Non-refundable \$50 Application Fee
- Advising appointment [plu.edu/studyaway/advising](https://plu.edu/studyaway/advising)

### APPLY FOR FUNDING

Visit [plu.edu/studyaway/funding](https://plu.edu/studyaway/funding) for a list of scholarships

### APPLICATION DEADLINE

Fall '23 or Spring '24: **March 15, 2023**

Applications open in November during International Education Week.

**APPLY** at [studyaway.plu.edu](https://studyaway.plu.edu)

## 4. PREPARE

### LEARN ABOUT HEALTH AND SAFETY, LOGISTICS AND CULTURAL PREPARATION

- Research your host destination and culture
- Attend all mandatory pre-departure orientations to learn about logistics, prepare for health and safety and cultural transitions
- Apply for a visa (when applicable) with support from the Wang Center (Gateway) or your program provider (Featured)

## 5. SOJOURN

- While away, take full advantage of the opportunities your program and host culture provide. Challenge your perspective!
- Share stories and photos of your experiences *#LutesAway*
- Practice sustainable living within the context of your host culture.

## 6. REFLECT

### REFLECT, CLARIFY AND INTEGRATE YOUR EXPERIENCES INTO YOUR PLU CAREER AND BEYOND

Join **Wang Center Returner Events** to explore how you can integrate your study away experience with your academic, professional, and personal goals.

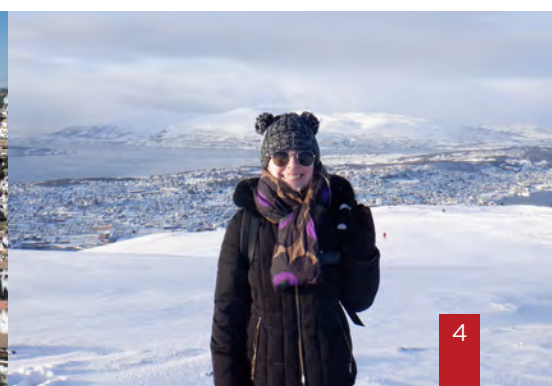
Apply to serve as a **Wang Center Global Ambassador** and promote global education on campus.

Develop an international independent research project and apply for **Wang Center Research Grant** funding.

Consider enrolling in PLU's **Peace Corps Prep Certificate Program** to get a head start on preparing to serve in the non-profit sector at home or abroad.

Look into opportunities to get involved with service learning in the local community here in Parkland.

Talk with **Alumni & Student Connections** about local internships, the post-PLU career search process, Peace Corps, Fulbright, graduate school or post-graduate volunteer or teach abroad programs.







Business, Environmental Studies,  
Kinesiology, Natural Sciences and  
Nordic Studies



## SEMESTER OFFERED

Fall, Spring

## PREREQUISITES

Open to sophomores, juniors or seniors in good standing; 2.7 minimum GPA (3.0 preferred)

## DURATION

August to December for Fall, January to June for Spring

## CREDIT

15-17 credits

## PROGRAM BASE

Bø, Norway

## HOUSING

Student residence hall, double room with bathroom

## LANGUAGE OF INSTRUCTION

English

## PROGRAM HIGHLIGHTS

- ★ Engage in an active campus community at the University of Southeastern Norway and experience the local natural landscape as an extension of classroom learning
- ★ Live and learn in an environment that challenges cultural assumptions and helps you to see your discipline and the world through a Norwegian lens
- ★ Explore Telemark, a region known as “Norway in miniature” and known for its rich cultural tradition and outdoor life
- ★ Focus on Business, Environmental Studies, Kinesiology, Marketing and Management, Natural Sciences or Norwegian Language and Literature

## PROGRAM DIRECTOR

**Dr. Charlie Katica**

*Associate Professor of  
Kinesiology  
Director, USN Program  
katicacp@plu.edu  
253-535-7363*

## PROGRAM MANAGER

**Megan Grover**

*Associate Director of  
Study Away & Semester  
Program Manager  
megan.grover@plu.edu  
253-535-8754*





# CHENGDU

Continuity and Change in a  
World Power



## PROGRAM HIGHLIGHTS

- ★ Study at Sichuan University, one of China's most prestigious universities, with students from all over China and the world
- ★ Develop your Chinese language abilities with courses available at all levels
- ★ Engage with local communities through study tours to rural farms, local villages and nearby monuments
- ★ Deepen your understanding of the various cultures of China through study tours to the Forbidden City, the Great Wall in Beijing, and Xi'an, whose famous Terracotta Warriors and Wild Goose Pagoda are reminders of China's prominence in the world as the eastern terminus of the Silk Road

### PROGRAM DIRECTOR

**Dr. Paul Manfredi**  
*Professor of Chinese*  
manfredi@plu.edu  
253-535-7216

### PROGRAM MANAGER

**Megan Grover**  
*Associate Director of  
Study Away & Semester  
Program Manager*  
megan.grover@plu.edu  
253-535-8754



### SEMESTER OFFERED

Fall

### PREREQUISITES

Open to sophomores, juniors or seniors in good standing; 2.7 minimum GPA (3.0 preferred)

### DURATION

August to December for Fall

### CREDIT

12-18 credits

### PROGRAM BASE

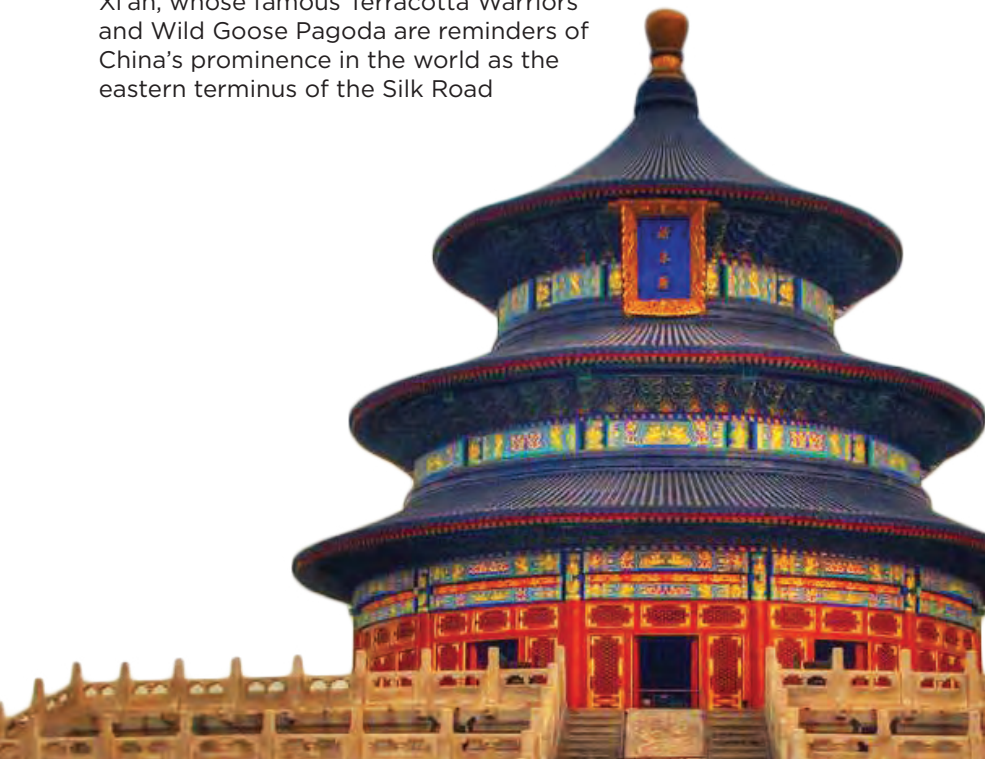
Chengdu, China

### HOUSING

International student residence hall, double rooms with bathroom

### LANGUAGE OF INSTRUCTION

English, Chinese (language courses only)



# GATEWAY & FEATURED SEMESTER PROGRAMS

Gateway study away programs are uniquely designed and administered in partnership with PLU faculty. Featured Programs, administered by partner institutions, align with our mission and typically have a long history of PLU student participation and ties to PLU.



[plu.edu/studyaway](https://plu.edu/studyaway)



WAY  
NORWAY

nany (IES ABROAD)  
Culture

stria (IES ABROAD)  
& Social Sciences

de, Serbia (SIT)  
Conflict Studies in the Balkans

ns, Greece (CYA)  
es, Social Sciences, Classics

Ulaanbaatar, Mongolia (SIT)  
Nomadism, Geopolitics and the Environment

New Delhi, India (SIT)  
Public Health, Gender and Community Action

Seoul, South Korea (CIEE)  
Arts & Sciences

CHENGDU, CHINA

Kathmandu, Nepal (SIT)  
Development and Social Change  
Tibetan and Himalayan Peoples

Ho Chi Minh City, Vietnam (SIT)  
Culture, Social Change & Development

Kerambitan, Bali, Indonesia (SIT)  
Arts, Religion and Social Change

DEK, NAMIBIA

Wellington, New Zealand  
Victoria University of Wellington

Hobart, Tasmania, Australia  
University of Tasmania

# OAXACA

Development, Culture, Environment  
and Social Change in Mexico



## PROGRAM DIRECTOR

**Dr. Tamara R. Williams**

*Professor of Hispanic  
Studies*

*Executive Director,  
Wang Center*

[williatr@plu.edu](mailto:williatr@plu.edu)  
253-535-7678

## PROGRAM MANAGER

**Megan Grover**

*Associate Director of  
Study Away & Semester  
Program Manager*

[megan.grover@plu.edu](mailto:megan.grover@plu.edu)  
253-535-8754

## PROGRAM HIGHLIGHTS

- ★ Explore Mexican history, development, society and environment through an interdisciplinary view of Ancient, Modern, and Contemporary Mexico
- ★ Learn about U.S.-Mexico relations and gain an in-depth perspective of Mexican immigration to — and the hispanization of — the United States
- ★ Experience approaches to, and strategies for, social change, and the value placed on these processes by diverse groups in the Oaxaca region and across Mexico
- ★ Integrate academic knowledge and intercultural skills in an internship with a local nonprofit organization focused on an issue related to your academic, personal or professional goals
- ★ Build knowledge of pressing issues facing Mexico today through extended study tours to Mexico City and the states of Puebla and Morelos
- ★ Increase Spanish proficiency to advanced, advanced plus or superior through a complete immersion program

## SEMESTER OFFERED

Fall

## PREREQUISITES

Open to sophomores, juniors or seniors in good standing; 3.0 minimum GPA; 4-5 semesters of college-level Spanish or the equivalent

## DURATION

Mid-August to mid-December, 17 weeks divided into three sessions

## CREDIT

16-17 credits

## PROGRAM BASE

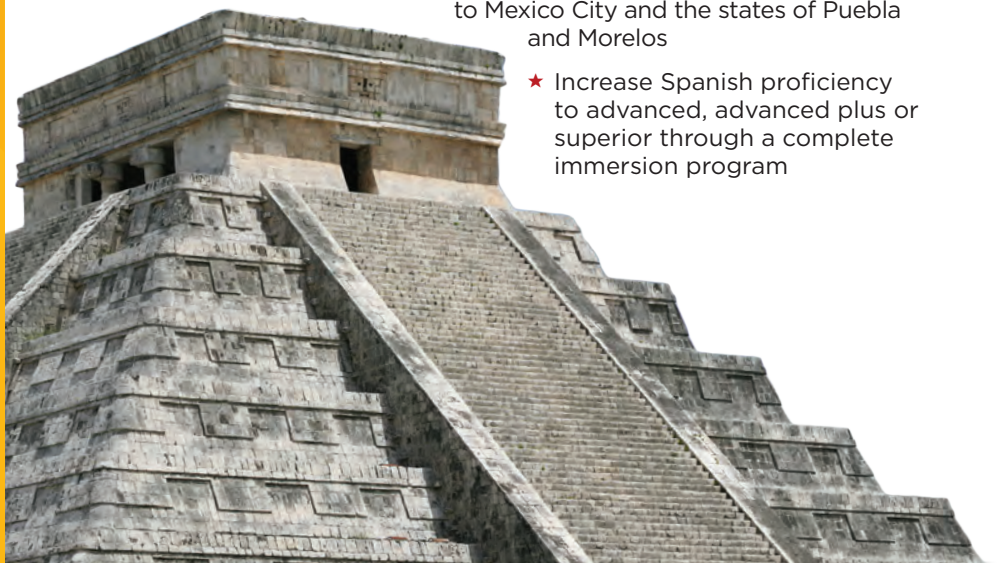
Oaxaca City, Mexico

## HOUSING

Homestay

## LANGUAGE OF INSTRUCTION

Spanish







# OSLO

## Peace and Conflict Studies

### PROGRAM HIGHLIGHTS

- ★ Challenge the perception of the “sameness” of Western societies by experiencing the rapidly changing Norwegian culture and society and Norway’s active engagement in defining and redefining its roles internationally and within its borders
- ★ Examine the Norwegian approach to contemporary issues in a central location with engaged faculty whose specialties include Peace and Conflict Studies, African Studies, International Relations, Middle East Studies, Political Theory and more
- ★ Study in English alongside Norwegians majoring in Peace & Conflict and International Studies
- ★ Immerse yourself in Norwegian culture, history, geography, society, and politics with the “Norway—An Introduction” course (not for credit) that includes excursions in and around Oslo

### PROGRAM DIRECTOR

**Dr. Ami V. Shah**  
Associate Professor of  
Global Studies  
shahav@plu.edu  
253-535-7687

### PROGRAM MANAGER

**Megan Grover**  
Associate Director of  
Study Away & Semester  
Program Manager  
megan.grover@plu.edu  
253-535-8754



### SEMESTER OFFERED

Fall

### PREREQUISITES

Open to sophomores, juniors or seniors in good standing; 2.7 minimum GPA (3.0 preferred)

### DURATION

August to December

### CREDIT

16 credits

### PROGRAM BASE

Oslo, Norway

### HOUSING

Student housing, single room with bathroom, shared kitchen

### LANGUAGE OF INSTRUCTION

English





# IHON-OXFORD

## International Honors Program



### SEMESTER OFFERED

Fall, Spring

### PREREQUISITES

Open to sophomores, juniors or seniors in good standing; 3.0 minimum GPA

Program designed for IHON students, but some non-IHON students may be admitted on a space-available basis, particularly in Fall semester

### DURATION

Mid-August to December for Fall, February to mid-June for Spring

### CREDIT

16 credits

### PROGRAM BASE

Oxford, England

### HOUSING

Private room within shared PLU student house

### LANGUAGE OF INSTRUCTION

English

### PROGRAM DIRECTOR

#### THROUGH MAY 2023:

**Dr. Arthur Strum**

*Resident Assistant Professor,  
Multi-Disciplinary Programs  
strumac@plu.edu  
253-535-8774*

#### BEGINNING JUNE 2023:

**Brenda Llewellyn-Ihssen**

*Associate Professor, Early &  
Medieval Christian History  
bll@plu.edu  
253-535-7237*

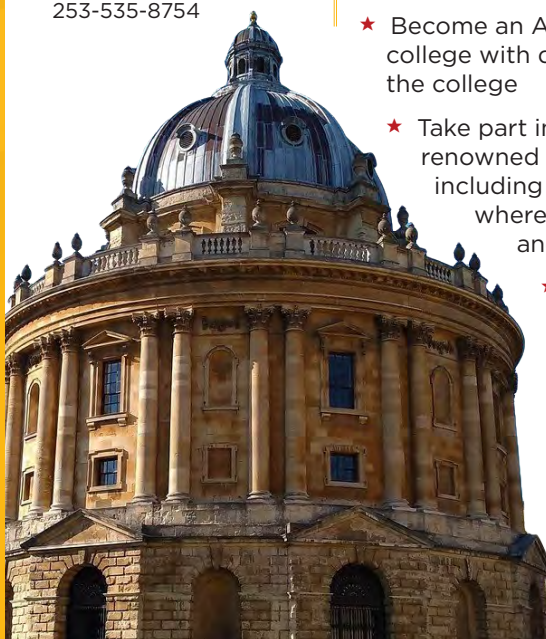
### PROGRAM MANAGER

**Megan Grover**

*Associate Director of  
Study Away & Semester  
Program Manager  
megan.grover@plu.edu  
253-535-8754*

### PROGRAM HIGHLIGHTS

- ★ Experience the “Oxford tutorial” — weekly one-on-one sessions with Oxford faculty and graduate students, aimed at bringing forth the students’ own powers of judgment, thought, and argumentation
- ★ Learn to “read” the United Kingdom through the disciplinary lens of the semester’s Site Director — a PLU-IHON faculty member who will teach a place-based 200-level seminar and lead you on study tours in London and other sites
- ★ Apply what you’re reading and learning to your own experiences in the 4-credit, discussion-based “Living and Learning in Oxford” course, also led by the PLU Site Director
- ★ Become an Associate Member of an Oxford college with dining and other privileges in the college
- ★ Take part in induction into the world-renowned Bodleian research library, including more than 20 Oxford branches, where you have full research access and reading privileges
- ★ Complete two of your 200-level IHON seminars — one in the form of an interdisciplinary tutorial with Oxford faculty and graduate students, the other with the PLU Site Director







# TRINIDAD & TOBAGO

Heritage, Cultural Fusion and Sustainability in the Southern Caribbean

## PROGRAM HIGHLIGHTS

- ★ Gain an in-depth understanding of Trinbagonian culture through a required set of three PLU-designed courses taught by local professors, local experts and US professors
- ★ Examine key issues such as post-colonialism, globalization, diversity, equity, social justice, gender and environmental sustainability in a rich, ethnically diverse culture
- ★ Study at University of the West Indies, a major research institution in the Caribbean, and engage with local students
- ★ Engage with the rich cultural, environmental, religious and artistic diversity of Trinidad & Tobago through a series of study tours and lectures that facilitate student participation in Trinidad's expressions of the Hindu spring festival of Phagwa, the West African Orisha and Shouter Baptist festivals, the Muslim Hosay commemoration, and the world famous Trinidad Carnival
- ★ Experience the traditional fishing village of Castara, Tobago, as it explores new directions in organic gardening, marine research, and sustainable tourism

## PROGRAM DIRECTOR

**Dr. Michael Behrens**  
*Professor of Biology*  
behrenmd@plu.edu  
253-535-7565

## PROGRAM MANAGER

**Megan Grover**  
*Associate Director of Study Away & Semester Program Manager*  
megan.grover@plu.edu  
253-535-8754

## TRINIDAD & TOBAGO



VENEZUELA

## SEMESTER OFFERED

Spring (Includes J-Term course)

## PREREQUISITES

Open to sophomores, juniors or seniors in good standing; 2.7 minimum GPA (3.0 preferred)

## DURATION

January to May, 20 weeks

## CREDIT

19-21 credits

## PROGRAM BASE

St. Augustine, Trinidad and Tobago

## HOUSING

University of the West Indies dormitory, double rooms

## LANGUAGE OF INSTRUCTION

English





# VESTFOLD

## Kinesiology in Norway



### PROGRAM DIRECTOR

**Dr. Charlie Katica**  
*Associate Professor of Kinesiology  
Director, USN Program*  
katicacp@plu.edu  
253-535-7363

### PROGRAM MANAGER

**Megan Grover**  
*Associate Director of Study Away & Semester Program Manager*  
megan.grover@plu.edu  
253-535-8754

### PROGRAM HIGHLIGHTS

- ★ Engage in an active campus community at the University of Southeastern Norway and experience the local natural landscape as an extension of classroom learning
- ★ Focus on Kinesiology in the Exercise and Health Management program
- ★ Examine the Norwegian health system and work life and social laws regulating health and sick leave through project management development and apprenticeship
- ★ Live and learn in an environment that challenges cultural assumptions and helps you to see your discipline and the world through a Norwegian lens
- ★ Put theoretical components into practice at the Vestfold campus' gym and pool facilities or in the stunning natural setting with numerous outdoor recreation options

### SEMESTER OFFERED

Fall, Spring

### PREREQUISITES

Open to sophomores, juniors or seniors in good standing; 2.7 minimum GPA (3.0 preferred)

### DURATION

August to December for Fall, January to June for Spring

### CREDIT

15-17 credits

### PROGRAM BASE

Vestfold, Norway

### HOUSING

Student residence hall, double room with bathroom

### LANGUAGE OF INSTRUCTION

English





# WINDHOEK

Cultural Immersion for Education,  
Natural Sciences, and Social Sciences

## PROGRAM HIGHLIGHTS

- ★ Study at the premier University of Namibia alongside students from Namibia and countries across Africa and the globe
- ★ Engage in a practicum in a local school and complete a robust set of courses aligned with PLU's program requirements (Education students)
- ★ Learn about this young democratic country with a focus on a historical perspective of Namibia from colonization to democracy
- ★ Engage with indigenous people, cultures, and the country's unique geography on study tours, through rural homestays in the villages of northern Namibia and visits to Namibia's renowned national parks and game reserves
- ★ Create your own batik art in a multi-day workshop in Windhoek
- ★ Engage with the local community through an internship or volunteer work with community organizations
- ★ Spend January enrolled in a context-setting, intensive course on non-Western history taught by a local Namibia historian

## PROGRAM DIRECTOR

**Dr. Jan Weiss**  
*Associate Dean  
Associate Professor of  
Education*  
weissjm@plu.edu  
253-535-7282

## PROGRAM MANAGER

**Megan Grover**  
*Associate Director of  
Study Away & Semester  
Program Manager*  
megan.grover@plu.edu  
253-535-8754



## SEMESTER OFFERED

Spring (Includes J-Term course)

## PREREQUISITES

Open to sophomores, juniors or seniors in good standing; 2.7 minimum GPA (3.0 preferred)

## DURATION

January to May, 20 weeks

## CREDIT

17-18 credits

## PROGRAM BASE

Windhoek, Namibia

## HOUSING

University of Namibia on-campus housing complex, double rooms

## LANGUAGE OF INSTRUCTION

English



## STUDY AWAY AT PLU

---

**ALIGNED** with PLU mission

**INTEGRATED** with curriculum  
and university systems

**RESPONSIVE** to academic,  
professional and personal goals  
and needs

**ACCESSIBLE** to students of all  
financial backgrounds

**INCLUSIVE** programs provide  
immersion experiences for all  
students



**WANG CENTER FOR GLOBAL AND  
COMMUNITY ENGAGED EDUCATION**  
PACIFIC LUTHERAN UNIVERSITY

12180 PARK AVENUE SOUTH  
TACOMA, WA 98447-0003  
253-535-7577

**[plu.edu/wangcenter](http://plu.edu/wangcenter)**